

INSTRUCTIONS
TO THE
SURVEYORS GENERAL OF PUBLIC LANDS
OF
THE UNITED STATES,
FOR THOSE
SURVEYING DISTRICTS ESTABLISHED IN AND SINCE THE YEAR 1850;
CONTAINING, ALSO,
A MANUAL OF INSTRUCTIONS
TO
REGULATE THE FIELD OPERATIONS OF DEPUTY SURVEYORS,
ILLUSTRATED BY DIAGRAMS.

PRESCRIBED, ACCORDING TO LAW, BY THE PRINCIPAL CLERK OF SURVEYS, PURSUANT TO
ORDER OF THE COMMISSIONER OF THE GENERAL LAND OFFICE.

WASHINGTON:
A. O. P. NICHOLSON, PUBLIC PRINTER,
1855.

TO THE SURVEYORS GENERAL

OF

PUBLIC LANDS OF THE UNITED STATES

FOR THE SURVEYING DISTRICTS ESTABLISHED IN AND SINCE THE YEAR 1850.

By the direction of the COMMISSIONER OF THE GENERAL LAND OFFICE, the accompanying instructions are prescribed for your official government, including a MANUAL OF INSTRUCTIONS to regulate the field operations of your deputy surveyors. The latter is a revision of the Manual of Surveying Instructions prepared for OREGON in 1851, (the edition of which is now exhausted,) and presents, in some respects, more copious illustrations, both in the specimen field notes and in the diagrams, than could be furnished amidst the pressure of the exigency under which the former had to be prepared. It will be observed that, in the former edition, the township and section lines south of the base are made to start therefrom, and close on the first standard parallel south; whereas, under the present instructions, such lines are made to start from the first standard parallel south, and to close to the north on the base: and thus there will be closing corners and starting corners, both on the base and standard lines. Such modification is introduced for the sake of entire uniformity of method in new fields of survey, and will not, of course, affect any past operations under the original instructions.

The starting corners on the base line and on the standards will, of course, be common to two townships or to two sections lying on and north of such lines; and the closing corners on such lines, from the south, should be carefully connected with the former by measurements to be noted in the field book.

Where STONE can be had to perpetuate corner boundaries, such, for obvious reasons, should always be preferred for that purpose, and the dimensions of the stone, as herein prescribed, (on page 9,) are to be regarded as the *minimum size*; but in localities where it is found practicable to obtain a stone of *increased dimensions*, it is always desirable to do so, particularly for TOWNSHIP CORNERS, and especially for those on base; meridian, and standard lines; and to such purport the deputy surveyor is to be specially instructed.

Prior to entering upon duty, the deputy surveyor is to make himself thoroughly acquainted with the official requirements in regard to field operations in all the details herein set forth, and to be apprized of the weighty moral and legal responsibilities under which he will act.

(iv)

Unfaithfulness in the execution of the public surveys will be detected by special examinations of the work to be made for that purpose, and, when detected, will immediately subject the delinquent deputy and his bondsmen to be sued by the district attorney of the United States, at the instance of the proper surveyor general—the institution of which suit will act at once as a lien upon any property owned by him or them at that time; and such delinquency, moreover, is an offence punishable by the statute, with all the pains and penalties of perjury, (see act of 1846, quoted on pages 19 and 20 hereof,) and will of necessity debar the offending deputy from future employment in like capacity. Hence, in the execution of contracts for surveying public lands, there is every incentive to fidelity that can address itself either to the moral sense, or to motives of private interest.

By order of the Commissioner :

JOHN M. MOORE,
Principal Clerk of Surveys.

GENERAL LAND OFFICE,
February 22, 1855.

TABLE OF CONTENTS.

	Page.
System of rectangular surveying; range, township, and section lines; mode of numbering townships and sections. Standard parallels	1, 2
Of measurements, chaining, and marking; tally pins; process of chaining	2, 3, 4
Marking lines; of trial or random lines	4
Insuperable objects on line; witness points; marking irons	5
Establishing corner boundaries; at what points for township, section, quarter section, and meander corners, respectively	5, 6
Manner of establishing corners by means of posts	6, 7
Notching corner posts	8
Bearing trees; how many at the different corners, and how to be marked	8, 9
Stones for corner boundaries; minimum size; marking same	9
Mounds around posts, of earth or stone; how to be constructed and conditioned	10
Mound memorials—witness mounds to corners	11
Double corners only on base and standard parallels	12
Meandering navigable streams, lakes, and deep ponds	12, 13, 14
Field books for deputy surveyors	15, 16
Summary of objects and data to be noted in field books	17, 18
Swamp lands granted to the State by act of 28th September, 1850; their outlines to be specially noted by the deputy surveyor	18, 19
Noting of settlers' claims in OREGON, WASHINGTON, and NEW MEXICO	19
Affidavits to field notes, and provisions of act of 8th August, 1846, respecting the same. Pains and penalties which attach to false surveys	20
Forms of official oaths, prior to entering upon duty, for a deputy and his assistants	20, 21
Exteriors or township lines; and limitations within which they must close	21, 22
Method of subdividing	22, 23, 24
Limitations within which section and meander lines must close	24
Of Diagram A, showing a body of township exteriors	24

	Page.
Of Diagram B, showing the subdivision of a township into sections	25
Of Diagram C, illustrating the mode of making mound, stake, and stone corners	25
Subdivisions of fractional sections into forty-acre lots are to be made by the surveyor general on the township plats, and to be designated by special numbers, where they cannot be described as quarter-quarters	25, 26
Township plats to be prepared by the surveyor general in <i>triplicate</i>	26
Township plats to be furnished to the General Land Office and to the district land offices. Details to be shown thereon, respectively	26
"Descriptive notes," showing the quality of soil and kind of timber found on the surveyed lines in each township, and describing each corner boundary, are to accompany the plat of the same, to be furnished by the surveyor general to the district land office	26
The original field books of surveys, bearing the written approval of the surveyor general, to be retained in his office	26
Certified transcripts of field books to be furnished to General Land Office	26
Meander corners to be numbered on township plats	26
Variation of the needle, and mode of ascertaining the same	28
Specimen field notes A and B—the former of the exterior lines of a township, and the latter of the subdivision of the same—constitute a separate series of pages from 1 to 53 inclusive; and they are preceded by an INDEX referring the township, section, closing, and meander lines, as shown on diagram B, to their corresponding pages in the notes A and B	1—53
The "General description" of the character of public land in the township follows the subdivisional notes, with a "list of names" of assistants, and the mode of authenticating the survey, under the provisions of the act of 8th August, 1846, and form for certifying copies of field notes to be transmitted to the General Land Office	54, 55, 56
Conclusion. "Table showing the difference of latitude and departure in running 80 chains, at any course from 1 to 60 minutes"	56

SYSTEM OF RECTANGULAR SURVEYING.

1. The public lands of the United States are ordinarily surveyed into rectangular tracts, bounded by lines conforming to the cardinal points.

2. The public lands are laid off, in the first place, into bodies of land of six miles square, called *Townships*, containing as near as may be 23,040 acres. The townships are subdivided into thirty-six tracts called *Sections*, of a mile square, each containing as near as may be, 640 acres. Any number or series of contiguous townships, situate north or south of each other, constitute a *Range*.

The law requires that the lines of the public surveys shall be governed by the true meridian, and that the townships shall be *six miles square*,—two things involving in connexion a mathematical impossibility—for, strictly to conform to the meridian, necessarily throws the township out of square, by reason of the convergency of meridians, and hence, by adhering to the true meridian, results the necessity of departing from the strict requirements of law, as respects the precise area of townships and the subdivisional parts thereof, the township assuming something of a trapezoidal form, which inequality develops itself more and more as such the higher the latitude of the surveys. It is doubtless in view of these circumstances that the law provides (see sec. 2 of the act of May 18, 1796) that the sections of a mile square shall contain the quantity of 640 acres, *as nearly as may be*; and, moreover, provides (see sec. 3 of the act of 10th May, 1800) in the following words: “And in all cases where the exterior lines of the townships, thus to be subdivided into sections or half sections, shall exceed, or shall not extend six miles, the excess or deficiency shall be specially noted, and added to or deducted from the western or northern ranges of sections or half sections in such township, according as the error may be in running the lines from east to west, or from south to north; the sections and half sections bounded on the northern and western lines of such townships shall be sold as containing only the quantity expressed in the returns and plats, respectively, and all others as containing the complete legal quantity.”

The accompanying diagram, marked A, will serve to illustrate the method of running out the exterior lines of townships, as well on the *north* as on the *south* side of the base line; and the order and mode of subdividing townships will be found illustrated in the accompanying specimen field notes, conforming with the township diagram B. The method here presented is designed to insure as full a compliance with all the requirements, meaning, and intent of the surveying laws as, it is believed, is practicable.

The section lines are surveyed from *south* to north on true meridians, and from *east* to west, in order to throw the excesses or deficiencies in measurements on the north and west sides of the township, as required by law.

3. The townships are to bear numbers in respect to the base line either north or south of it; and the tiers of townships, called “*Ranges*,” will bear numbers in respect to the meridian line according to their relative position to it, either on the east or west.

4. The thirty-six sections into which a township is subdivided are numbered, commencing with number *one* at the *northeast* angle of the township, and proceeding west to number six, and thence proceeding east to number twelve, and so on, alternately, until the number thirty-six in the southeast angle.

5. STANDARD PARALLELS (usually called correction lines) are established at stated intervals to provide for or counteract the error that otherwise would result from the convergency of meridians, and also to arrest error arising from inaccuracies in measurements on meridian lines, which, however, must ever be studiously avoided. On the *north* of the principal base line it is proposed to have these standards run at distances of every *four* townships, or twenty-four miles, and on the *south* of the principal base, at distances of every *five* townships, or thirty miles.

OF MEASUREMENTS, CHAINING, AND MARKING.

1. Where uniformity in the variation of the needle is not found, the public surveys must be made with an instrument operating independently of the magnetic needle. Burt's *improved solar compass*, or other instrument of equal utility, must be used of necessity in such cases; and it is deemed best that such instrument should be used under all circumstances. Where the needle can be relied on, however, the ordinary compass may be used in subdividing and meandering.

2. The township lines, and the subdivision lines, will usually be measured by a two-pole chain of thirty-three feet in length, consisting of fifty links, and each link being seven inches and ninety-two hundredths of an inch long. On uniform and level ground, however, the four-pole chain may be used. Your measurements will, however, always be represented according to the four-pole chain of one hundred links. The deputy surveyor must also have with him a measure of the standard chain, wherewith to compare and adjust the chain in use, from day to day, with punctuality and carefulness; and must return such standard chain to the Surveyor General's office for examination when his work is completed.

OF TALLY PINS.

3. You will use eleven tally pins made of steel, not exceeding fourteen inches in length, weighty enough towards the point to make them drop perpendicularly, and having a ring at the top, in which is to be fixed a piece of red cloth, or something else of conspicuous color, to make them readily seen when stuck in the ground.

PROCESS OF CHAINING.

4. In measuring lines with a two-pole chain, every *five* chains are called "a *tally*," because at that distance the last of the ten tally pins with which the forward chainman set out will have been stuck. He then cries "tally;" which cry is repeated by the other chainman, and each registers the distance by slipping a thimble, button, or ring of leather, or something of the kind, on a belt worn for that purpose, or by some other convenient method. The hind chainman then comes up, and having counted in the presence of his fellow the tally pins which he has taken up, so that both may be assured that none of the pins have been lost, he then takes the forward end of the chain, and proceeds to set the pins. Thus the chainmen alternately change places, each setting the pins that he has taken up, so that one is forward in all the odd, and the other in all the even tallies. Such procedure, it is believed, tends to insure accuracy in measurement, facilitates the recollection of the distances to objects on the line, and renders a mis-tally almost impossible.

LEVELLING THE CHAIN AND PLUMBING THE PINS.

5. The length of every line you run is to be ascertained by precise horizontal measurement, as nearly approximating to an air line as is pos-

sible in practice on the earth's surface. This all important object can only be attained by a rigid adherence to the three following observances:

1. Ever keeping the chain *stretched* to its utmost degree of tension on even ground.

2. On uneven ground, keeping the chain not only stretched as aforesaid, but horizontally *levelled*. And when ascending and descending steep ground, hills, or mountains, the chain will have to be *shortened* to one-half its length, (and sometimes more,) in order accurately to obtain the true horizontal measure.

3. The careful plumbing of the tally pins, so as to attain precisely *the spot* where they should be stuck. The more uneven the surface, the greater the caution needed to set the pins.

MARKING LINES.

6. All lines on which are to be established the legal corner boundaries are to be marked after this method, viz: Those trees which may intercept your line must have two chops or notches cut on each side of them without any other marks whatever. These are called "*sight trees*," "*line trees*," or "*station trees*."

A sufficient number of other trees standing nearest to your line, on either side of it, are to be *blazed* on two sides diagonally, or quartering towards the line, in order to render the line conspicuous, and readily to be traced, the blazes to be opposite each other, coinciding in direction with the line where the trees stand very near it, and to approach nearer each other the further the line passes from the blazed trees. Due care must ever be taken to have the lines so well marked as to be readily followed.

ON TRIAL, OR RANDOM LINES,

the trees are not to be blazed, unless occasionally from indispensable necessity, and then it must be done so guardedly as to prevent the possibility of confounding the marks of the trial line with the *true*. But bushes and limbs of trees may be lopped, and *stakes set* on the trial, or random line, at every *ten* chains, to enable the surveyor on his return to follow and correct the trial line, and establish therefrom the *true line*. To prevent confusion, the temporary stakes set on the trial, or random lines, must be *pulled up* when the surveyor returns to establish the true line.

INSUPERABLE OBJECTS ON LINE—WITNESS POINTS.

7. Under circumstances where your course is obstructed by impassable obstacles, such as ponds, swamps, marshes, lakes, rivers, creeks, &c., you will prolong the line across such obstacles by taking the necessary right angle offsets; or, if such be inconvenient, by a traverse or trigonometrical operation, until you regain the line on the opposite side. And in case a north and south, or a true east and west, line is regained in advance of any such obstacle, you will prolong and mark the line back to the obstacle so passed, and state all the particulars in relation thereto in your field book. And at the intersection of lines with both margins of impassable obstacles, you will establish a *Witness Point*, (for the purpose of perpetuating the intersections therewith,) by setting a post, and giving in your field book the course and distance therefrom to two trees on opposite sides of the line, each of which trees you will mark with a blaze and notch facing the post; but on the margins of navigable water courses, or navigable lakes, you will mark the trees with the proper number of the fractional section, township, and range.

As The best marking tools adapted to the purpose must be provided for marking neatly and *distinctly* all the letters and figures required to be made at corners; and the deputy is to have always at hand the necessary implements for keeping his marking irons in order; for which purpose a rat-tail file and a small whetstone will be found indispensable.

ESTABLISHING CORNER BOUNDARIES.

To procure the faithful execution of this portion of a surveyor's duty is a matter of the utmost importance. After a true coursing, and most exact measurements, the corner boundary is the consummation of the work, for which all the previous pains and expenditures have been incurred. If, therefore, the corner boundary be not perpetuated in a permanent and workmanlike manner, the *great aim* of the surveying service will not have been attained. A boundary corner, in a timbered country, is to be a *tree*, if one be found at the precise spot; and if not, a *post* is to be planted thereat; and the position of the corner post is to be indicated by trees adjacent, the angular bearings and distances of which from the corner are facts to be ascertained and registered in your field book. (See article, "Bearing trees.")

In a region where stone abounds the corner boundary will be a small *monument of stones* along side of a single marked stone for a township corner, and a single stone for all other corners.

In a region where timber is not near, and stone not found, the corner will be a *mound of earth*, of prescribed size, varying to suit the case.

The following are the different points for perpetuating corners, viz:

1. For township boundaries, at intervals of every six miles.
2. For section boundaries, at intervals of every mile, or 80 chains.
3. For quarter section boundaries, at intervals of every half mile, or 40 chains. Exceptions, however, occur on east and west lines, as explained hereafter.

[The half quarter section boundary is not marked in the field, but is regarded by the law as a point intermediate between the half mile or quarter section corners. See act of 24th April, 1820, entitled "An act making further provision for the sale of the public lands," which act refers to the act of Congress passed on the 11th of February, 1805, entitled "An act concerning the mode of surveying the public lands of the United States," for the manner of ascertaining the corners and contents of half quarter sections.]*

4. MEANDER CORNER POSTS are planted at all those points where the township or section lines intersect the banks of such rivers, bayous, lakes, or islands, as are by law directed to be meandered.

The courses and distances on meandered navigable streams govern the calculations wherefrom are ascertained the true areas of the tracts of land (sections, quarter sections, &c.) known to the law as *fractional*, and binding on such streams.

MANNER OF ESTABLISHING CORNERS BY MEANS OF POSTS.

Township, sectional, or mile corners, and quarter sectional or half mile corners, will be perpetuated by planting a post at the place of the corner, to be formed of the most durable wood of the forest at hand.

The posts must be set in the earth by digging a hole to admit them *two feet* deep, and must be very securely rammed in with earth, and also with stone, if any be found at hand. The portion of the post which protrudes above the earth must be *squared* off sufficiently smooth to admit of receiving the marks thereon, to be made with appropriate marking irons, indicating what it stands for. Thus the sides of *township*

* The subdivision of the half-quarter section into quarter-quarter sections is authorized by "An act supplementary to the several laws for the sale of the public lands," approved April 5, 1832.

Where the requisite number of "bearing trees" is not to be found at convenient and suitable distances, such as are found are to be marked as herein directed; but in all such cases of deficiency in the number of bearing trees, (unless, indeed, the boundary itself be a *tree*.) a *quadrangular trench*, with sides of *five* feet, and with the angles to the cardinal points, must be spaded up outside the corner, as a centre, and the earth carefully thrown on the inside, so as to form a range of earth, which will become covered with grass, and present a small square elevation, which in aftertime will serve to mark, unmistakably, the spot of the corner.

CORNER STONES.

Where it is deemed best to use STONES for boundaries, in lieu of posts, you may, at *any* corner, insert endwise into the ground, to the depth of 7 or 8 inches, a stone, the number of cubic inches in which shall not be less than the number contained in a stone 14 inches long, 12 inches wide, and 3 inches thick—equal to 504 cubic inches—the edges of which must be set north and south, on north and south lines, and east and west, on east and west lines; the dimensions of each stone to be given in the field notes at the time of establishing the corner. The kind of stone should also be stated.

MARKING CORNER STONES.

Stones at township corners, common to four townships, must have *six* notches, cut with a pick or chisel on each edge or side towards the cardinal points; and where used as section corners on the range and township lines, or as section corners in the interior of a township, they will also be notched, to correspond with the directions given for notching posts similarly situated.

Posts or stones at township corners on the base and standard lines, and which are common to two townships on the north side thereof, will have *six* notches on each of the *west*, *north*, and *east* sides or edges; and where such stones or posts are set for corners to two townships *south* of the base or standard, *six* notches will be cut on each of the *west*, *south*, and *east* sides or edges.

Stones, when used for quarter section corners, will have $\frac{1}{4}$ cut on them—on the west side on north and south lines, and on the north side on east and west lines.

MOUNDS.

Whenever bearing trees are not found, mounds of earth, or stone, are to be raised *around posts* on which the corners are to be marked in the manner aforesaid. Wherever a mound of earth is adopted, the same will present a conical shape; but at its base, on the earth's surface, a *quadrangular trench* will be dug; by the "trench" (here meant) is to be understood a *spade deep* of earth thrown up from the four sides of the line, *outside* the trench, so as to form a *continuous elevation along its outer edge*. In mounds of earth, common to *four* townships or to *four* sections, they will present the *angles* of the quadrangular trench (*diagonally*) towards the cardinal points. In mounds, common only to *two* townships or *two* sections, the *sides* of the quadrangular trench will *face* the cardinal points. The sides of the quadrangular trench at the base of a township mound are to be *six* feet, the height of mound *three* feet.

At section, quarter section, and meander corners, the sides of the quadrangular trench at base of mounds are to be *five* feet, and the conical height *two and a half* feet.

Prior to piling up the earth to construct a mound, there is to be dug a spade full or two of earth from the corner boundary point, and in the cavity so formed is to be deposited a *marked stone*, or a portion of *charcoal*, (the quantity whereof is to be noted in the field book;) or in lieu of charcoal or marked stone, a *charred stake* is to be driven twelve inches down into such centre point: either of those will be a *witness* for the future, and whichever is adopted, the fact is to be noted in the field book.

When mounds are formed of *earth*, the spot from which the earth is taken is called the "*pit*," the centre of which ought to be, wherever practicable, at a uniform distance and in a uniform direction from the centre of the mound. There is to be a "*pit*" on *each* side of every mound, distant eighteen inches outside of the trench. The trench may be expected hereafter to be covered by tufts of *grass*, and thus to indicate the place of the mound, when the mound itself may have become obliterated by time or accident.

At meander corners the "*pit*" is to be directly on the line, *eight links* further from the water than the mound. Wherever necessity is found for deviating from these rules in respect to the "*pits*," the course and distance to each is to be stated in the field books.

Perpetuity in the mound is a great desideratum. In forming it with light alluvial soil the surveyor may find it necessary to make due allowance for the future settling of the mound, and thus making the mound

more elevated than would be necessary in a more compact and tenacious soil, and increasing the base of it. In so doing, the relative proportions between the township mound and other mounds is to be preserved as nearly as may be.

The earth is to be pressed down with the shovel during the process of piling it up. Mounds are to be *covered* with sod, grass side up, where sod is to be had; but, in forming a mound, *sod* is NEVER to be *wrought up* with the earth, because sod decays, and in the process of decomposing it will cause the mound to become porous, and therefore liable to premature destruction.

POSTS IN MOUNDS

must show above the top of the mound ten or twelve inches, and be notched and marked precisely as they would be for the same corner without the mound.

MOUND MEMORIALS.

Besides the *charcoal*, marked *stone* or *charred stake*, one or the other of which must be lodged in the earth at the point of the corner, the deputy surveyor is recommended to plant *midway* between each pit and the trench, seeds of some tree, (those of fruit trees adapted to the climate being always to be preferred,) so that, in course of time, should such take root, a small clump of trees may possibly hereafter note the place of the corner. The facts of planting such seed, and the kind thereof, are matters to be truthfully noted in the field book.

WITNESS MOUNDS TO TOWNSHIP OR SECTION CORNERS.

If a township or section corner, in a situation where bearing or witness trees are not found within a reasonable distance therefrom, shall fall within a ravine, or in any other situation where the nature of the ground, or the circumstances of its locality, shall be such as may prevent, or prove unfavorable to, the erection of a mound, you will perpetuate such corner by selecting in the immediate vicinity thereof a suitable plot of ground as a site for a bearing or *witness mound*, and erect thereon a mound of earth in the same manner and conditioned in every respect, with *charcoal*, *stone*, or *charred stake* deposited beneath, as before directed; and measure and state in your field book the distance and course from the position of the true corner of the bearing or witness mound so placed and erected.

DOUBLE CORNERS.

Such corners are to be nowhere except on the base and standard lines, whereon are to appear both the corners which mark the intersections of the lines which close thereon, and those from which the surveys start on the north. On these lines, and at the time of running the same, the township, section, and quarter section corners are to be planted, and each of these is a corner common to *two*, (whether township or section corners,) on the north side of the line, and must be so marked.

The corners which are established on the standard parallel, at the time of running it, are to be known as "*standard corners*," and, in addition to all the *ordinary* marks, (as herein prescribed,) they will be marked with the letters S. C. Closing corners will be marked with the letters C. C. in addition to other marks.

The standard parallels are designed to be run *in advance* of the contiguous surveys on the south of them, but circumstances may exist which will *impede* or temporarily delay the *due* extension of the standard; and when, from uncontrollable causes, the *contiguous townships* must be surveyed in advance of the time of extending the standard, in any such event it will become the duty of the deputy who shall afterwards survey any such standard to plant thereon the *double set* of corners, to wit, the standard corners, to be marked S. C., and the closing ones which are to be marked C. C.; and to make such measurements as may be necessary to connect the closing corners and complete the unfinished meridional lines of such contiguous and prior surveys, on the principles herein set forth, under the different heads of "exterior or township lines," and of "diagram B."

You will recollect that the corners, (whether township or section corners,) which are *common* to *two*, (two townships or two sections,) are not to be planted *diagonally* like those which are common to *four*, but with the flat sides facing the cardinal points, and on which the marks and notches are made as usual. This, it will be perceived, will serve yet more fully to distinguish the standard parallels from all other lines.

THE MEANDERING OF NAVIGABLE STREAMS.

1. Standing with the face looking *down* stream, the bank on the *left* hand is termed the "*left bank*," and that on the *right* hand the "*right bank*." These terms are to be universally used to distinguish the two banks of a river or stream.

2. Both banks of *navigable* rivers are to be meandered by taking the courses and distances of their sinuosities, and the same are to be entered in the field book.

At those points where either the township or section lines intersect the banks of a navigable stream, POSTS, or, where necessary, MOUNDS of *earth* or *stone*, are to be established at the time of running these lines. These are called "meander corners;" and in meandering you are to commence at one of those corners on the township line, coursing the banks, and measuring the distance of each course from your commencing corner to the next "meander corner," upon the same or another boundary of the same township, carefully noting your intersection with all intermediate meander corners. By the same method you are to meander the opposite bank of the same river.

The crossing distance *between* the MEANDER CORNERS on same line is to be ascertained by triangulation, in order that the river may be protracted with entire accuracy. The particulars to be given in the field notes.

3. You are also to meander, in manner aforesaid, all *lakes* and deep ponds of the area of twenty-five acres and upwards; also navigable bayous; *shallow* ponds, readily to be drained, or likely to dry up, are not to be meandered.

You will notice all streams of water falling into the river, lake, or bayou you are surveying, stating the width of the same at their mouth; also all springs, noting the size thereof and depth, and whether the water be pure or mineral; also the head and mouth of all bayous; and all islands, rapids, and bars are to be noticed, with intersections to their upper and lower points to establish their exact situation. You will also note the elevation of the banks of rivers and streams, the heights of falls and cascades, and the length of rapids.

4. The precise relative position of islands, in a township made fractional by the river in which the same are situated, is to be determined trigonometrically—sighting to a flag or other fixed object on the island, from a special and carefully measured base line, connected with the surveyed lines, on or near the river bank, you are to form connexion between the meander corners on the river to points corresponding thereto, in direct line, on the bank of the island, and there establish the proper meander corners, and calculate the distance across.

5. In meandering lakes, ponds, or bayous, you are to commence at a meander corner upon the township line, and proceed as above directed for the banks of a navigable stream. But where a lake, pond, or bayou

lies entirely within the township boundaries, you will commence at a meander corner established in subdividing, and from thence take the courses and distances of the entire margin of the same, noting the intersection with all the meander corners previously established thereon.

6. To meander a pond lying entirely within the boundaries of a section, you will run and measure *two* lines thereunto from the nearest section or quarter section corner on *opposite* sides of such pond, giving the courses of such lines. At *each* of the points where such lines shall intersect the margin of such pond, you will establish a *witness* point, by fixing a post in the ground, and taking bearings to any adjacent trees, or, if necessary, raising a mound.

The relative position of these points being thus definitely fixed in the section, the meandering will commence at one of them, and be continued to the other, noting the intersection, and thence to the beginning. The proceedings are to be fully entered in the field book.

7. In taking the connexion of an island with the main land, when there is no meander corner in line, opposite thereto, to sight from, you will measure a special base from the meander corner nearest to such island, and from such base you will triangulate to some fixed point on the shore of the island, ascertain the distance across, and there establish a *special* meander corner, wherefrom you will commence to meander the island.

The field notes of meanders will be set forth in the body of the field book according to the dates when the work is performed, as illustrated in the specimen notes annexed. They are to state and describe particularly the meander corner from which they commenced, each one with which they close, and are to exhibit the meanders of each fractional section separately; following, and composing a part of such notes, will be given a description of the land, timber, depth of inundation to which the bottom is subject, and the banks, current, and bottom of the stream or body of water you are meandering.

9. No blazes or marks of any description are to be made on the lines meandered between the established corners, but the utmost care must be taken to pass no object of topography, or *change therein*, without giving a particular description thereof in its proper place in your meander notes.

OF FIELD BOOKS.

The FIELD NOTES afford the elements from which the plats and calculations in relation to the public surveys are made. They are the source wherefrom the description and evidence of locations and boundaries are officially delineated and set forth. They therefore must be a faithful, distinct and minute record of every thing officially done and observed by the surveyor and his assistants, pursuant to instructions, in relation to running, measuring, and marking lines, establishing boundary corners, &c.; and present, as far as possible, a full and complete *topographical description* of the country surveyed, as to every matter of useful information, or likely to gratify public curiosity.

There will be sundry separate and distinct field books of surveys, as follows:

Field notes of the MERIDIAN and BASE lines, showing the establishment of the *township, section* or mile, and *quarter section* or half mile, boundary corners thereon; with the crossings of streams, ravines, hills, and mountains; character of soil, timber, minerals, &c.

Field notes of the "STANDARD PARALLELS, or correction lines," will show the establishment of the township, section, and quarter section corners, besides exhibiting the topography of the country on line, as required on the base and meridian lines.

Field notes of the EXTERIOR lines of TOWNSHIPS, showing the establishment of corners on lines, and the topography, as aforesaid.

Field notes of the SUBDIVISIONS of TOWNSHIPS into sections and quarter sections.

The field notes must in all cases be taken precisely in the order in which the work is done on the ground, and the *date* of each day's work must follow immediately after the notes thereof. The *variation of the needle* must always occupy a *separate line* preceding the notes of measurements on line.

The exhibition of every mile of surveying, whether on township or subdivisional lines, must be *complete in itself*, and be separated by a black line drawn across the paper.

The description of the surface, soil, minerals, timber, undergrowth, &c., on *each mile* of line, is to follow the notes of survey of such line, and not be mixed up with them.

No abbreviations of words are allowable, except of such words as are *constantly* occurring, such as "*sec.*" for "*section*;" "*in. diam.*" for

"*inches diameter*;" "*chs.*" for "*chains*;" "*lks.*" for "*links*;" "*dist.*" for "*distant*," &c. Proper names must never be abbreviated, however often their recurrence.

The nature of the subject-matter of the field book is to form its title page, showing the State or Territory where such survey lies, by whom surveyed, and the dates of commencement and completion of the work. The second page is to contain the names and duties of assistants. Whenever a new assistant is employed, or the duties of any one of them are changed, such facts, with the reasons therefor, are to be stated in an appropriate entry immediately preceding the notes taken under such changed arrangements. With the notes of the *exterior* lines of townships, the deputy is to submit a plat of the lines run, on a scale of two inches to the mile, on which are to be noted all the objects of topography on line necessary to illustrate the notes, viz: the distances on line at the crossings of streams, so far as such can be noted on the paper, and the direction of each by an arrow-head pointing down stream; also the intersection of line by prairies, marshes, swamps, ravines, ponds, lakes, hills, mountains, and all other matters indicated by the notes, to the fullest extent practicable.

With the instructions for making subdivisional surveys of townships into sections, the deputy will be furnished by the Surveyor General with a diagram of the *exterior* lines of the townships to be subdivided, (on the above named scale,) upon which are carefully to be laid down the measurements of each of the section lines on such boundaries whereon he is to close, the magnetic variation of each mile, and the particular description of each corner. P. in M. signifies post in mound. And on such diagram the deputy who subdivides will ~~make~~ appropriate sketches of the various objects of topography as they occur on his lines, so as to exhibit not only the points on line at which the same occur, but also the direction and position of each between the lines, or within each section, so that every object of topography may be properly completed or connected in the showing.

These notes must be distinctly written out, in language precise and clear, and their figures, letters, words, and meaning are always to be unmistakable. No leaf is to be cut or mutilated, and none to be taken out, whereby suspicion might be created that the missing leaf contained matter which the deputy believed it to be his interest to conceal.

SUMMARY OF OBJECTS AND DATA REQUIRED TO BE NOTED.

1. The precise length of every line run, noting all necessary offsets therefrom, with the reason and mode thereof.

2. The kind and diameter of all "*bearing trees*," with the course and distance of the same from their respective corners; and the precise relative position of WITNESS CORNERS to the *true corners*.

3. The kind of materials (earth or stone) of which MOUNDS are constructed—the fact of their being conditioned according to instructions—with the course and distance of the "*pits*," from the centre of the mound, where necessity exists for deviating from the *general* rule.

4. *Trees on line*. The name, diameter, and distance on line to all trees which it intersects.

5. Intersections by line of *land objects*. The distance at which the line first intersects and then leaves every *settler's claim and improvement*; prairie; river, creek, or other "*bottom*;" or swamp, marsh, grove, and wind fall, with the course of the same at both points of intersection; also the distances at which you begin to ascend, arrive at the top, begin to descend, and reach the foot of all remarkable hills and ridges, with their courses, and *estimated* height, in feet, above the level land of the surrounding country, or above the bottom lands, ravines, or waters near which they are situated.

6. Intersections by line of *water objects*. All rivers, creeks, and smaller streams of water which the line crosses; the distance on line at the points of intersection, and their *widths on line*. In cases of *navigable* streams, their width will be ascertained between the *meander corners*, as set forth under the proper head.

7. The land's *surface*—whether level, rolling, broken, or hilly.

8. The *soil*—whether first, second, or third rate.

9. *Timber*—the several kinds of timber and undergrowth, in the order in which they predominate.

10. *Bottom lands*—to be described as wet or dry, and if subject to inundation, state to what depth.

11. *Springs of water*—whether fresh, saline, or mineral, with the course of the stream flowing from them.

12. *Lakes and ponds*—describing their banks and giving their height, and also the depth of water, and whether it be pure or stagnant.

13. *Improvements*. Towns and villages; Indian towns and wigwams; houses or cabins; fields, or other improvements; sugar tree groves, sugar camps, mill seats, forges, and factories.

14. *Coal* banks or beds; *peat* or turf grounds; *minerals* and ores; with particular description of the same as to quality and extent, and all *diggings* therefor; also *salt* springs and licks. All reliable information you can obtain respecting these objects, whether they be on your immediate line or not, is to appear in the general description to be given at the end of the notes.

15. *Roads and trails*, with their directions, whence and whither.

16. Rapids, cataracts, cascades, or falls of water, with the height of their fall in feet.

17. Precipices, caves, sink-holes, ravines, stone quarries, ledges of rocks, with the kind of stone they afford.

18. *Natural curiosities*, interesting fossils, petrifications, organic remains, &c.; also all ancient works of art, such as mounds, fortifications, embankments, ditches, or objects of like nature.

19. The *variation* of the needle must be noted at all points or places on the lines where there is found any material *change* of variation, and the position of such points must be perfectly identified in the notes.

20. Besides the ordinary notes taken on line, (and which must always be written down on the spot, leaving nothing to be supplied by memory,) the deputy will subjoin, at the conclusion of his book, such further description or information touching any matter or thing connected with the township (or other survey) which he may be able to afford, and may deem useful or necessary to be known—with a *general description* of the township in the *aggregate*, as respects the face of the country, its soil and geological features, timber, minerals, waters, &c.

SWAMP LANDS.

By the act of Congress approved September 28, 1850, swamp and overflowed lands "*unfit for cultivation*," are granted to the State in which they are situated. In order clearly to define the quantity and locality of such lands, the field notes of surveys, in addition to the other objects of topography required to be noted, are to indicate the points at which you enter all lands which are evidently subject to such grant, and to show the distinctive character of the land so noted; whether it is a swamp or marsh, or otherwise subject to inundation to an extent that, without *artificial means*, would render it "*unfit for cultivation*." The depth of inundation is to be stated, as determined from indications on the trees where timber exists; and its frequency is to be set forth as accurately as may be, either from your own knowledge of the general

character of the stream which overflows, or from reliable information to be obtained from others. The words "unfit for cultivation," are to be employed in addition to the usual phraseology in regard to entering or leaving such swamps, marshy, or overflowed lands. It may be that sometimes the margin of bottom, swamp, or marsh, in which such uncultivable land exists, is not identical with the margin of the body of land "unfit for cultivation;" and in such cases a separate entry must be made for each opposite the marginal distance at which they respectively occur.

But in cases where lands are overflowed by *artificial* means, (say by dams for milling, logging, or for other purposes,) you are not officially to regard such overflow, but will continue your lines across the same without setting meander posts, stating particularly in the notes the depth of the water, and how the overflow was caused.

SPECIAL INSTRUCTION RESPECTING THE NOTING OF SETTLERS' CLAIMS IN
OREGON, WASHINGTON, AND NEW MEXICO.

The law requires that such claims should be laid down temporarily on the township plats; in order to do which, it is indispensably necessary to obtain, to some extent, connexions of these claims with the lines of survey. Under the head of "intersection by line of land objects," the deputy is required to note the *points* in line *whereat* it may be intersected by such claims; but, in addition thereto, there must be obtained at least *one angle* of each claim, with its course and distance either from the point of intersection, or from an established corner boundary, so that its connexion with the regular survey will be legally determined. If the settler's *dwelling* or barn is visible from line, the bearings thereof should be carefully taken from *two* points noted on line, and set forth in the field notes.

AFFIDAVITS TO FIELD NOTES.

At the close of the notes and the *general description* is to follow an affidavit, a form for which is given; and to enable the deputy surveyor fully to understand and appreciate the responsibility under which he is acting, his attention is invited to the provisions of the second section of the act of Congress, approved August 8th, 1846, entitled "An act to equalize the compensation of the surveyors general of the public lands of the United States, and for other purposes," and which is as follows:

"Sec. 2. That the surveyors general of the public lands of the United

States, in addition to the oath now authorized by law to be administered to deputies on their appointment to office, shall require each of their deputies, on the return of his surveys, to take and subscribe an oath or affirmation that those surveys have been faithfully and correctly executed according to law and the instructions of the surveyor general; and on satisfactory evidence being presented to any court of competent jurisdiction, that such surveys, or any part thereof, had not been thus executed, the deputy making such false oath or affirmation shall be deemed guilty of perjury, and shall suffer all the pains and penalties attached to that offence; and the district attorney of the United States for the time being, in whose district any such false, erroneous, or fraudulent surveys shall have been executed, shall, upon the application of the proper surveyor general, immediately institute suit upon the bond of such deputy; and the institution of such suit shall act as a lien upon any property owned or held by such deputy, or his sureties, at the time such suit was instituted."

Following the "general description" of the township is to be "A list of the names of the individuals employed to assist in running, measuring and marking the lines and corners described in the foregoing field notes of township No. _____ of the BASE LINE of range No. _____ of the _____ MERIDIAN, showing the respective capacities in which they acted."

FORM OF OFFICIAL OATHS TO BE TAKEN PRIOR TO ENTERING UPON DUTY.

For a deputy surveyor.

I, A. B., having been appointed a deputy surveyor of the lands of the United States in _____, do solemnly swear (or affirm) that I will well and faithfully, and to the best of my skill and ability, execute the duties confided to me pursuant to a contract with C. D., surveyor general of public lands in _____, bearing date the _____ day of _____, 185 , according to the laws of the United States and the instructions received from the said surveyor general.

(To be sworn and subscribed before a justice of the peace, or other officer authorized to administer oaths.)

For chainman.

I, E. F., do solemnly swear (or affirm) that I will faithfully execute the duties of chain carrier; that I will level the chain upon uneven ground, and plumb the tally pins, whether by sticking or dropping the

same; that I will report the true distance to all notable objects, and the true length of all lines that I assist in measuring, to the best of my skill and ability.

(To be sworn and subscribed as above.)

For flagman or axeman.

I, G. H., do solemnly swear (or affirm) that I will well and truly perform the duties of ———, according to instructions given me, and to the best of my skill and ability.

(To be sworn and subscribed as above.)

EXTERIORS OR TOWNSHIP LINES.

The principal meridian, the base line, and the standard parallels having been first run, measured, and marked, and the corner boundaries thereon established, according to instructions, the process of running, measuring, and marking the exterior lines of townships will be as follows:

Townships situated NORTH of the base line, and WEST of the principal meridian.

Commence at No. 1, (see figures on diagram A,) being the southwest corner of T. 1 N.—R. 1 W., as established on the base line; thence north, on a true meridian line, four hundred and eighty chains, establishing the section and quarter section corners thereon, as per instructions, to No. 2, whereat establish the corner of Tps. 1 and 2 N.—Rs. 1 and 2 W.; thence east, on a random or trial line, setting *temporary* section and quarter section stakes, to No. 3, where measure and note the distance at which the line intersects the eastern boundary, north or south of the *true* or established corner. Run and measure westward, on the true line, (taking care to note all the land and water crossings, &c., as per instructions,) to No. 4, which is identical with No. 2, establishing the section and quarter section PERMANENT CORNERS on said line. Should it happen, however, that such random line falls short, or overruns in length, or intersects the eastern boundary of the township at more than three chains and fifty links distance from the *true* corner thereon, as compared with the corresponding boundary on the south, (either of which would indicate an important error in the surveying,) the lines must be *retraced*, even if found necessary to remeasure the meridional

boundaries of the township, (especially the western boundary,) so as to discover and correct the error; in doing which, the *true corners* must be established and marked, and the *false ones* destroyed and obliterated, to prevent confusion in future; and *all the facts* must be distinctly set forth in the notes. Thence proceed in a similar manner from No. 4 to No. 5, No. 5 to No. 6, No. 6 to No. 7, and so on to No. 10, the southwest corner of T. 4 N.—R. 1 W. Thence north, still on a true meridian line, establishing the mile and half-mile corners, until reaching the STANDARD PARALLEL or correction line; throwing the *excess* over, or *deficiency* under, *four hundred and eighty chains*, on the *last* half-mile, according to law, and at the intersection establishing the "CLOSING CORNER," the distance of which *from* the standard corner must be measured and noted as required by the instructions. But should it ever so happen that some impassable barrier will have prevented or delayed the extension of the standard parallel along and above the field of present survey, then the deputy will plant, in place, the corner for the township, subject to correction thereafter, should such parallel be extended.

NORTH of the base line, and EAST of the principal meridian.

Commence at No. 1, being the *southeast* corner of T. 1 N.—R. 1 E., and proceed as with townships situated "north and west," except that the *random* or trial lines will be run and measured *west*, and the *true* lines east, throwing the excess over or deficiency under four hundred and eighty chains on the *west end* of the line, as required by law; wherefore the surveyor will commence his measurement with the length of the deficient or excessive half section boundary on the west of the township, and thus the remaining measurements will all be *even* miles and half-miles.

METHOD OF SUBDIVIDING.

1. The first mile, both of the south and east boundaries of each township you are required to subdivide, is to be carefully traced and measured before you enter upon the subdivision thereof. This will enable you to observe any change that may have taken place in the magnetic variation, as it existed at the time of running the township lines, and will also enable you to compare your chaining with that upon the township lines.

2. Any discrepancy, arising either from a change in the magnetic variation or a difference in measurement, is to be carefully noted in the field notes.

3. After adjusting your compass to a variation which you have thus found will retrace the eastern boundary of the township, you will commence at the corner to sections 35 and 36, on the south boundary, and run a line due north, forty chains, to the quarter section corner which you are to establish between sections 35 and 36; continuing due north forty chains further, you will establish the corner to sections 25, 26, 35 and 36.

4. From the section corner last named, run a *random* line, without blazing, *due east*, for corner of sections 25 and 36, in east boundary, and at forty chains from the starting point set a post for *temporary* quarter section corner. If you intersect exactly at the corner, you will blaze your random line back, and establish it as the *true* line; but if your random line intersects the said east boundary, either north or south of said corner, you will measure the distance of such intersection, from which you will calculate a course that will run a *true* line back to the corner from which your random started. You will establish the *permanent* quarter section corner at a point equidistant from the two terminations of the *true* line.

5. From the corner of sections 25, 26, 35, 36, run due north between sections 25 and 26, setting the quarter section post, as before, at forty chains, and at eighty chains establishing the corner of sections 23, 24, 25, 26. Then run a random *due east* for the corner of sections 24 and 25 in east boundary; setting temporary quarter section post at forty chains; correcting back, and establishing *permanent* quarter section corner at the equidistant point on the *true* line, in the manner directed on the line between sections 25 and 36.

6. In this manner you will proceed with the survey of each successive section in the first tier, until you arrive at the north boundary of the township, which you will reach in running up a random line between sections 1 and 2. If this random line should not intersect at the corner established for sections 1, 2, 35 and 36, upon the township line, you will note the distance that you fall east or west of the same, from which distance you will calculate a course that will run a *true* line south to the corner from which your random started. Where the closing corner is on the base or standard line, a deviation from the general rule is explained under the head of "Diagram B."

7. The first tier of sections being thus laid out and surveyed, you will return to the south boundary of the township, and from the corner of sections 34 and 35 commence and survey the second tier of sections in the same manner that you pursued in the survey of the first, closing at the section corners on the first tier.

8. In like manner proceed with the survey of each successive tier of sections, until you arrive at the fifth tier; and from each section corner which you establish upon this tier, you are to run random lines to the corresponding corners established upon the range line forming the western boundary of the township; setting, as you proceed, each *temporary* quarter section post at forty chains from the interior section corner, so as to throw the excess or deficiency of measurement on the extreme tier of quarter sections contiguous to the township boundary; and, on returning, establish the *true* line, and establish thereon the *permanent* quarter section corner.

QUARTER SECTION CORNERS, both upon north and south and upon east and west lines, are to be established at a point *equidistant* from the corresponding section corners, *except* upon the lines closing on the north and west boundaries of the township, and in those situations the quarter section corners will always be established at precisely *forty chains* to the north or west (as the case may be) of the respective section corners from which those lines respectively *start*, by which procedure the excess or deficiency in the measurements will be thrown, according to law, on the extreme tier of quarter sections.

Every north and south section line, except those terminating in the north boundary of the township, is to be eighty chains in length. The east and west section lines, except those terminating on the west boundary of the township, are to be within one hundred links of eighty chains in length; and the north and south boundaries of any one section, except in the extreme western tier, are to be within one hundred links of equal length. The meanders within each fractional section, or between any two meander posts, or of a pond or island in the interior of a section, must close within one chain and fifty links.

DIAGRAM A illustrates the mode of laying off township exteriors north of the BASE line and EAST and WEST of the principal MERIDIAN, whether between the base and first standard, or between any two standards; and the same general principles will equally apply to townships south of the base line and east and west of the meridian, and between any two standards south, where the distances between the base and first standard, and between the standards themselves, are five townships or thirty miles.

DIAGRAM B indicates the mode of laying off a TOWNSHIP into sections and quarter sections, and the accompanying set of field notes (marked B) critically illustrate the mode and order of conducting the survey under every variety of circumstance shown by the topography on the diagram. In townships lying *south* of and *contiguous* to the base or to any standard parallel, the lines between the northern tier of sections will be run *north*, and be made to close as *true* lines; quarter section corners will be set at forty chains, and section corners established at the intersection of such section lines with the base or standard, (as the case may be,) and the distance is to be measured and entered in the field book to the nearest corner on such standard or base.

DIAGRAM C illustrates the mode of making mound, stake, or stone corner boundaries for townships, sections, and quarter sections.

The mode and order of surveying the *exterior* boundaries of a township are illustrated by the specimen field notes marked A; and the mode and order of *subdividing* a township into sections and quarter sections are illustrated by the specimen field notes marked B. The attention of the deputy is particularly directed to these specimens, as indicating not only the method in which his work is to be conducted, but also the order, manner, language, &c., in which his field notes are required to be returned to the Surveyor General's office; and such specimens are to be deemed part of these instructions, and any *departure* from their details, without special authority, in cases where the circumstances are analogous in practice, *will be regarded as a violation of his contract and oath.*

The subdivisions of fractional sections into forty acre lots, (as near as may be,) are to be so laid down on the official township plat in *red* lines, as to admit of giving to each a specific designation, if possible, according to its relative position in the fractional section, as per examples afforded by diagram B, as well as by a number, in all cases where the lot cannot properly be designated as a quarter-quarter. Those fractional subdivision lots which are not susceptible of being described according to relative local position, are to be numbered in regular series; No. 1 being (wherever practicable, and as a general rule) either the northeastern or the most easterly fractional lot, and proceeding from east to west and from west to east, alternately, to the end of the series; but such general rule is departed from under circumstances given as examples in fractional sections 4, 7, 19 and 30, where No. 1 is the interior lot of the northern and western tiers of the quarter sections to which there is a corresponding No. 2 given to the exterior lot, and the series of num-

bers is in continuation of the latter. The lots in the extreme northern and western tiers of quarter sections, containing either more or less than the regular quantity, are always to be numbered as per example. Interior lots in such extreme tiers are to be *twenty* chains wide, and the excess or deficiency of measurement is always to be thrown on the exterior lots; elsewhere, the assumed subdivisional corner will always be a point equidistant from the established corners.

The official township plat to be returned to the General Land Office is to show on its face, on the right hand margin, the meanders of navigable streams, islands, and lakes. Such details are wanted in the adjustment of the surveying accounts, but may be omitted in the copy of the township plat to be furnished to the district land office by the surveyor general. A suitable margin for *binding* is to be preserved on the left hand side of each plat. Each plat is to be certified, with table annexed, according to the forms subjoined to "diagram B," and is to show the areas of public land, of private surveys, and of water, with the aggregate area as shown on the diagram.

Each township plat is to be prepared in *triplicate*: one for the General Land Office, one for the district office, and the third to be retained as the record in the office of the Surveyor General.

The original field books, each bearing the *written approval* of the Surveyor General, are to be substantially bound into volumes of suitable size, and retained in the surveyor general's office, and certified *transcripts* of such field books (to be of *foolscap* size) are to be prepared and forwarded, from time to time, to the General Land Office.

With the copy of each township plat furnished to a district land office, the surveyor general is required by law to furnish *descriptive notes* as to the character and quality of the soil and timber found on and in the vicinity of each surveyed line, and giving a description of each corner boundary.

Printed blank forms for such notes will be furnished by the General Land Office. The forms provide eighteen spaces for *meander corners*, which, in most cases, will be sufficient; but when the number shall exceed eighteen, the residue will have to be inserted on the face of the township plat, to be furnished to the register of the district land office. There is shown a series of meander corners on diagram B, viz: from No. 1 to No. 22, on the river and islands; 23 to 28 being on Island lake; 29 and 30 on Clear lake; and 31 and 32 on lake in section 26.

There is also a distinct series of numbers, 1 to 7, to designate corners D. Reed's private survey, and to fractional sections, made such thereby; and the same series is continued from 8 to 14 inclusive, to

designate corners to S. Williams's private survey, and to fractional sections made such thereby. These are numberings on the plat merely for the purpose of ready reference to the descriptions of such corners to be furnished to the registers.

The letters on "diagram B," at the "corners" on the township boundaries, are referred to in the descriptive notes to be furnished to the district land office, but are not required to be inserted on the official plat to be returned to the General Land Office.

The following chapter, on the subject of the variation of the magnetic needle, is extracted from the revised edition of the work on surveying by CHARLES DAVIES, L. L. D., a graduate of the Military Academy at West Point. The work itself will be a valuable acquisition to the deputy surveyor; and his attention is particularly invited to the following chapter, which sets forth the modes by which the variation may be ascertained.

VARIATION OF THE NEEDLE.

1. The angle which the magnetic meridian makes with the true meridian, at any place on the surface of the earth, is called the *variation of the needle* at that place, and is east or west, according as the north end of the needle lies on the east or west side of the true meridian.

2. The variation is different at different places, and even at the same place it does not remain constant for any length of time. The variation is ascertained by comparing the magnetic with the true meridian.

3. If we suppose a line to be traced through those points on the surface of the earth, where the needle points directly north, such a line is called the *line of no variation*. At all places lying on the east of this line, the variation of the needle is west; at all places lying on the west of it, the variation is east.

4. The public is much indebted to Professor Loomis for the valuable results of many observations and much scientific research on the dip and variation of the needle, contained in the 39th and 42d volumes of Siliman's Journal.

The variation at each place was ascertained for the year 1840; and by a comparison of previous observations and the application of known formulas, the annual motion, or change in variation, at each place, was also ascertained, and both are contained in the tables which follow.

5. If the annual motion was correctly found, and continues uniform the variation at any subsequent period can be ascertained by simply multiplying the annual motion by the number of years, and adding the product, in the algebraic sense, to the variation in 1840. It will be observed that all variations west are designated by the plus sign; and all variations east, by the minus sign. The annual motions being all west have all the plus sign.

6. Our first object will be to mark the line, as it was in 1840, of *no variation*. For this purpose we shall make a table of places lying near this line.

PLACES NEAR THE LINE OF NO VARIATION.

Place.	Latitude.	Longitude.	Variation.	An. Motion
A Point	40° 53'	80° 13'	0° 00	+ 4'.4
Cleveland, Ohio	41 31	81 45	- 0 19	4.4
Detroit, Mich.	42 24	82 58	- 1 56	4
Mackinaw	45 51	84 41	- 2 08	3.9
Marietta, Ohio	39 30	81 28	- 1 24	4.3
Charlottesville, Va.	39 02	78 30	+ 0 19	3.7
Charleston, S. C.	32 42	80 04	- 2 44	1.3

At the point whose latitude is 40° 53', longitude 80° 13', the variation of the needle was nothing in the year 1840, and the direction of the line of no variation, traced north, was N. 24° 35' west. The line of no variation, prolonged, passed a little to the east at Cleveland, in Ohio—the variation there being 19 minutes east. Detroit lay still further to the west of this line, the variation there being 1° 56' east; and Mackinaw still further to the west, as the variation at that place was 2° 08' east.

The course of the line of no variation, prolonged southerly, was S. 24° 35' E. Marietta, Ohio, was west of this line—the variation there being 1° 24' east. Charlottesville, in Virginia, was a little to the east of it—the variation there being 19' west; whilst Charleston, in South Carolina, was on the west—the variation there being 2° 44' east.

From these results, it will be easy to see about where the line of no variation is traced in our own country.

7. We shall give two additional tables:

PLACES WHERE THE VARIATION WAS WEST.

Places.	Latitude.	Longitude.	Variation.	An. Motion.
Angle of Maine	48° 00'	67° 37'	+ 19° 30'	+ 8'.8
Waterville, Me.	44 27	69 32	12 36	5.7
Montreal	45 31	73 35	10 18	5.7
Keesville, N. Y.	44 28	73 32	8 51	5.3
Burlington, Vt.	44 27	73 10	9 27	5.3
Hanover, N. H.	43 42	72 14	9 20	5.2
Cambridge, Mass.	42 22	71 08	9 12	5
Hartford, Ct.	41 46	72 41	6 58	5
Newport, R. I.	41 28	71 21	7 45	5
Geneva, N. Y.	42 52	77 03	4 18	4.1
West Point	41 25	74 00	6 52	4
New York City	40 43	71 01	5 34	3.6
Philadelphia	39 57	75 11	4 08	3.2
Buffalo, N. Y.	42 52	79 06	1 37	4.1

PLACES WHERE THE VARIATION WAS EAST.

Places.	Latitude.	Longitude.	Variation.	An. Motion.
Mouth of Columbia River . .	46° 12'	123° 30'	- 21° 40'	Unknown.
Jacksouville, Ill.	39 43	90 20	8 28	+ 2'.5
St. Louis, Mo.	38 37	90 17	8 37	2.3
Nashville, Tenn.	36 10	86 52	6 42	2
Louisiana, at	29 40	94 00	8 41	1.4
Mobile, Ala.	30 42	88 16	7 05	1.4
Tuscaloosa, Ala.	33 12	87 43	7 26	1.6
Columbus, Geo.	32 28	85 11	5 28	2
Milledgeville, Geo.	33 07	83 24	5 07	2.4
Savannah, Geo.	32 05	81 12	4 13	2.7
Tallahassee, Fla.	30 26	84 27	5 03	1.8
Pensacola, Fla.	30 24	87 23	5 53	1.4
Logansport, Ind.	40 45	86 22	5 24	2.7
Cincinnati, Ohio	39 06	84 27	4 46	3.1

METHODS OF ASCERTAINING THE VARIATION.

8. The best practical method of determining the true meridian of a place, is by observing the north star. If this star were precisely at the point in which the axis of the earth, prolonged, pierces the heavens, then, the intersection of the vertical plane passing through it and the place, with the surface of the earth, would be the true meridian. But the star being at a distance from the pole, equal to 1° 30' nearly, it performs a revolution about the pole in a circle, the polar distance of which is 1° 30': the time of revolution is 23 h. and 56 min.

To the eye of an observer, this star is continually in motion, and is due north but twice in 23 h. 56 min.; and is then said to be on the meridian. Now, when it departs from the meridian, it apparently moves east or west, for 5 h. and 59 m., and then returns to the meridian again. When at its greatest distance from the meridian, east or west, it is said to be at its greatest *eastern* or *western* elongation.

The following tables show the times of its greatest eastern and western elongations.

EASTERN ELONGATIONS.

Days.	April.	May.	June.	July.	August.	Sept.
	H. M.	H. M.	H. M.	H. M.	H. M.	H. M.
1	18 18	16 26	14 24	12 20	10 16	8 20
7	17 56	16 03	14 00	11 55	9 53	7 58
13	17 34	15 40	13 35	11 31	9 30	7 36
19	17 12	15 17	13 10	11 07	9 08	7 15
25	16 49	14 53	12 45	10 43	8 45	6 53

WESTERN ELONGATIONS.

Days.	Oct.	Nov.	Dec.	Jan.	Feb.	March.
	H. M.	H. M.	H. M.	H. M.	H. M.	H. M.
1	18 18	16 22	14 19	12 02	9 50	8 01
7	17 56	15 59	13 53	11 36	9 26	7 38
13	17 34	15 35	13 27	11 10	9 02	7 16
19	17 12	15 10	13 00	10 44	8 39	6 54
25	16 49	14 45	12 34	10 18	8 16	6 33

The eastern elongations are put down from the first of April to the first of October; and the western, from the first of October to the first of April; the time is computed from 12 at noon. The western elongations in the first case, and the eastern in the second, occurring in the daytime, cannot be used. Some of those put down are also invisible, occurring in the evening, before it is dark, or after daylight in the morning. In such case, if it be necessary to determine the meridian at that particular season of the year, let 5 h. and 59 m. be added to, or subtracted from, the time of greatest eastern or western elongation, and the observation be made at night, when the star is on the meridian.

9. The following table exhibits the angle which the meridian plane makes with the vertical plane passing through the pole-star, when at its greatest eastern or western elongation: such angle is called the *azimuth*. The mean angle only is put down, being calculated for the first of July of each year:

AZIMUTH TABLE.

Year.	Lat. 32° Azimuth.	Lat. 34° Azimuth.	Lat. 36° Azimuth.	Lat. 38° Azimuth.	Lat. 40° Azimuth.	Lat. 42° Azimuth.	Lat. 44° Azimuth.
1851	1° 45½'	1° 48'	1° 50½'	1° 53½'	1° 56¾'	2° 00¼'	2° 04¼'
1852	1° 45'	1° 47½'	1° 50'	1° 53'	1° 56¼'	1° 59¼'	2° 03¾'
1853	1° 44½'	1° 47'	1° 49¾'	1° 52½'	1° 55¾'	1° 59¼'	2° 03¼'
1854	1° 44¼'	1° 46½'	1° 49¼'	1° 52'	1° 55¼'	1° 59'	2° 02¾'
1855	1° 43¾'	1° 46¼'	1° 48¾'	1° 51¾'	1° 54¾'	1° 58½'	2° 02¼'
1856	1° 43¼'	1° 45¾'	1° 48¼'	1° 51¼'	1° 54½'	1° 58'	2° 01¾'
1857	1° 43'	1° 45¼'	1° 48'	1° 50¾'	1° 54'	1° 57½'	2° 01¼'
1858	1° 42½'	1° 44¾'	1° 47½'	1° 50¼'	1° 53½'	1° 57'	2° 00¾'
1859	1° 42'	1° 44½'	1° 47'	1° 49¾'	1° 53'	1° 56½'	2° 00¼'
1860	1° 41¾'	1° 44'	1° 46½'	1° 49½'	1° 52½'	1° 56'	2° 00'
1861	1° 41¼'	1° 43¾'	1° 46¼'	1° 49'	1° 52¼'	1° 55¾'	1° 59½'

The use of the above tables, in finding the true meridian, will soon appear.

TO FIND THE TRUE MERIDIAN WITH THE THEODOLITE.

10. Take a board, of about one foot square, paste white paper upon it, and perforate it through the centre; the diameter of the hole being somewhat larger than the diameter of the telescope of the theodolite. Let this board be so fixed to a vertical staff as to slide up and down freely; and let a small piece of board, about three inches square, be nailed to the lower edge of it, for the purpose of holding a candle.

About twenty-five minutes before the time of the greatest eastern or western elongation of the pole-star, as shown by the tables of elongations, let the theodolite be placed at a convenient point and levelled. Let the board be placed about one foot in front of the theodolite, a lamp or candle placed on the shelf at its lower edge; and let the board be slipped up or down, until the pole-star can be seen through the hole. The light reflected from the paper will show the cross hairs in the telescope of the theodolite.

Then, let the vertical spider's line be brought exactly upon the pole-star, and, if it is an eastern elongation that is to be observed, and the star has not yet reached the most easterly point, it will move from the line towards the east, and the reverse when the elongation is west.

At the time the star attains its greatest elongation, it will appear to coincide with the vertical spider's line for some time, and then leave it, in the direction contrary to its former motion.

As the star moves towards the point of greatest elongation, the telescope must be continually directed to it, by means of the tangent-screw of the vernier plate; and when the star has attained its greatest elongation, great care should be taken that the instrument be not afterwards moved.

Now, if it be not convenient to leave the instrument in its place until daylight, let a staff, with a candle or small lamp upon its upper extremity, be arranged at thirty or forty yards from the theodolite, and in the same vertical plane with the axis of the telescope. This is easily effected, by revolving the vertical limb about its horizontal axis without moving the vernier plate, and aligning the staff to coincide with the vertical hair. Then mark the point directly under the theodolite; the line passing through this point and the staff, makes an angle with the true meridian equal to the azimuth of the pole-star.

From the table of azimuths, take the azimuth corresponding to the year and nearest latitude. If the observed elongation was east, the true meridian lies on the west of the line which has been found, and makes

with it an angle equal to the azimuth. If the elongation was west, the true meridian lies on the east of the line; and, in either case, laying off the azimuth angle with the theodolite, gives the true meridian.

TO FIND THE TRUE MERIDIAN WITH THE COMPASS.

11. 1. Drive two posts firmly into the ground, in a line nearly east and west; the uppermost ends, after the posts are driven, being about three feet above the surface, and the posts about four feet apart: then lay a plank, or piece of timber three or four inches in width, and smooth on the upper side, upon the posts, and let it be pinned or nailed, to hold it firmly.

2. Prepare a piece of board four or five inches square, and smooth on the under side. Let one of the compass-sights be placed at right angles to the upper surface of the board, and let a nail be driven through the board, so that it can be tacked to the timber resting on the posts.

3. At about twelve feet from the stakes, and in the direction of the pole-star, let a plumb be suspended from the top of an inclined stake or pole. The top of the pole should be of such a height that the pole star will appear about six inches below it; and the plumb should be swung in a vessel of water to prevent it from vibrating.

This being done, about twenty minutes before the time of elongation, place the board, to which the compass sight is fastened, on the horizontal plank, and slide it east or west, until the aperture of the compass-sight, the plumb-line, and the star, are brought into the same range. Then if the star depart from the plumb-line, move the compass-sight east or west along the timber, as the case may be, until the star shall attain its greatest elongation, when it will continue behind the plumb-line for several minutes, and will then recede from it in the direction contrary to its motion before it became stationary. Let the compass-sight be now fastened to the horizontal plank. During this observation it will be necessary to have the plumb-line lighted: this may be done by an assistant holding a candle near it.

Let now a staff, with a candle or lamp upon it, be placed at a distance of thirty or forty yards from the plumb-line, and in the same direction with it and the compass-sight. The line so determined makes, with the true meridian, an angle equal to the azimuth of the pole star; and from this line the variation of the needle is readily determined, even without tracing the true meridian on the ground.

Place the compass upon this line, turn the sights in the direction of it, and note the angle shown by the needle. Now, if the elongation, at

the time of observation, was west, and the north end of the needle is on the west side of the line, the azimuth, plus the angle shown by the needle, is the true variation. But should the north end of the needle be found on the east side of the line, the elongation being west, the difference between the azimuth and the angle would show the variation, and the reverse when the elongation is east.

1. Elongation west, azimuth	-	-	-	-	-	2° 04'
North end of the needle on the west, angle	-	-	-	-	-	4° 06'
Variation	-	-	-	-	-	6° 10' west.
2. Elongation west, azimuth	-	-	-	-	-	1° 59'
North end of the needle on the east, angle	-	-	-	-	-	4° 50'
Variation	-	-	-	-	-	2° 51' east.
3. Elongation east, azimuth	-	-	-	-	-	2° 05'
North end of the needle on the west, angle	-	-	-	-	-	8° 30'
Variation	-	-	-	-	-	6° 25' west.
4. Elongation east, azimuth	-	-	-	-	-	1° 57'
North end of the needle on the east, angle	-	-	-	-	-	8° 40'
Variation	-	-	-	-	-	10° 37' east.

REMARK I. The variation at West Point, in September, 1835, was 6° 32' west.

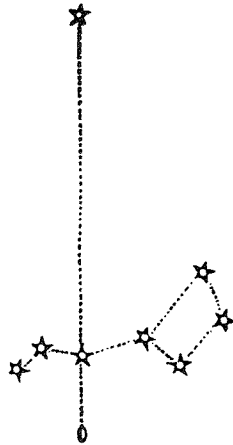
REMARK II. The variation of the needle should always be noted on every survey made with the compass, and then if the land be surveyed at a future time, the old lines can always be re-run.

12. It has been found by observation, that heat and cold sensibly affect the magnetic needle, and that the same needle will, at the same place, indicate different lines at different hours of the day.

If the magnetic meridian be observed early in the morning, and again at different hours of the day, it will be found that the needle will continue to recede from the meridian as the day advances, until about the time of the highest temperature, when it will begin to return, and at evening will make the same line as in the morning. This change is called the *diurnal variation*, and varies, during the summer season, from one-fourth to one-fifth of a degree.

13. A very near approximation to a true meridian, and consequently to the variation, may be had, by remembering that the pole-star very nearly reaches the true meridian, when it is in the same vertical plane with the star Alioth in the tail of the Great Bear, which lies nearest the four stars forming the quadrilateral.

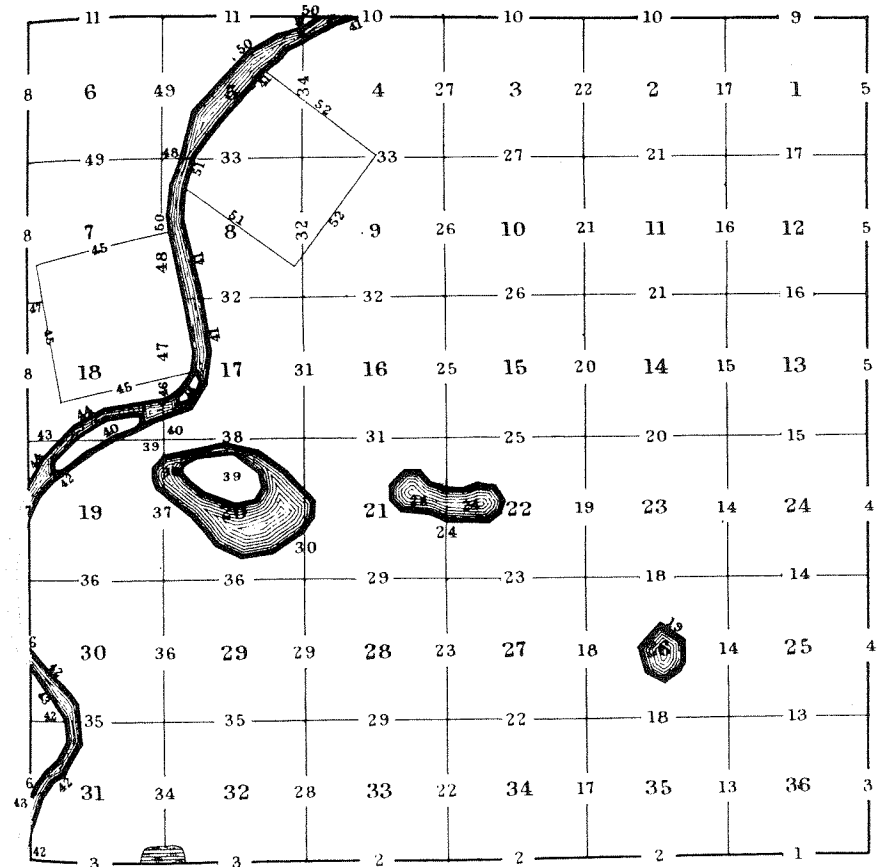
The vertical position can be ascertained by means of a plumb-line. To see the spider's lines in the field of the telescope at the same time with the star, a faint light should be placed near the object-glass. When the plumb-line, the star Alioth, and the north star, fall on the vertical spider's line, the horizontal limb is firmly clamped, and the telescope brought down to the horizon; a light, seen through a small aperture in a board, and held at some distance by an assistant, is then moved according to signals, until it is covered by the intersection of the spider's lines. A picket driven into the ground, under the light, serves to mark the meridian line for reference by day, when the angle formed by it and the magnetic meridian may be measured.



INDEX.

Referring the lines to the pages of the field-notes.

Town. 25 N. Range 2 W. Willamette Meridian.



A.

Field Notes of the survey of the exterior boundaries of Township 25 north of range 2 west of the Willamette meridian, in the Territory of Oregon, by Robert Acres, deputy surveyor, under his contract No. 1, bearing date the 2d day of January, 1854.

South Boundary, T. 25 N. R. 2 W. Willamette Meridian.

CHAINS.	Begin at the post, the established corner to Townships 24 and 25 North, in Ranges 2 and 3 West. The witness trees all standing, and agree with the description furnished me by the office, viz: A Black Oak, 20 in. dia. N. 37 E. 27 links, A Bur Oak, 24 in. dia. N. 43 W. 35 links, A Maple, 18 in. dia. S. 27 W. 39 links, A White Oak, 15 in. dia. S. 47 E. 41 links. East, on a random line on the South Boundaries of sections 31, 32, 33, 34, 35, and 36. Variation by Burt's improved solar compass, 18° 41' E, I set temporary half mile and mile posts at every 40 and 80 chains, and at 5 miles, 74 chains, 53 links, to a point 2 chains and 20 links north of the corner to Townships 24 and 25 North, Ranges 1 and 2 W. (Therefore, the correction will be 5 chains, 47 links West, and 37 links South per mile.) I find the corner post standing and the witness trees to agree with the description furnished me by the surveyor general's office, viz: A Bur Oak, 17 in. dia. bears N. 44 E. 31 links, A White Oak, 16 in. dia. N. 26 W. 21 links, A Lynn, 20 in. dia. S. 42 W. 15 links. A Black Oak, 24 in. dia. S. 27 E. 14 links. From the corner to Townships 24 and 25 N. Ranges 1 and 2 West, I run (at a variation of 18° 25' East,) West, on a true line along the South Boundary of section 36, 40.00 Set a post for quarter section corner, from which A Beech, 24 in. dia. bears N. 11 E. 38 links dist. A Beech, 9 in. dia. bears S. 9 E. 17 links dist. 62.50 A Brook, 6 links wide runs North, 80.00 Set a post for corner to sections 35 and 36, 1 and 2, from which A Beech, 9 in. dia. bears N. 22 E. 16 links dist. A Beech, 8 in. dia. bears N. 19 W. 14 links dist. A White Oak, 10 in. dia. bears S. 52 W. 7 links dist. A Black Oak, 14 in. dia. bears S. 46 E. 8 links dist. Land level, good soil, fit for cultivation, Timber, Beech; various kinds of Oak, Ash, and Hickory.
---------	---

South Boundary, T. 25 N. R. 2 W. Willamette Meridian.

CHAINS.	West, on a true line along the South Boundary of section 35, Variation 18° 25' East, 40.00 Set a post for quarter section corner, from which A Beech, 8 in. dia. bears N. 20 E. 8 links dist. No other tree convenient; made trench around post, 65.00 Begin to ascend a moderate hill; bears N. and S. 80.00 Set a post with trench, for corner of sections 34 and 35, 2 and 3, from which A Beech, 10 in. dia. bears N. 56 W. 9 links dist. A Beech, 10 in. dia. bears S. 51 E. 13 links dist. No other trees convenient to mark, Land level, or gently rolling, and good for farming, Timber, Beech, Oak, Ash, and Hickory; some Walnut and Poplar.
	West, on a true line along the South Boundary of section 34, Variation 18° 25' East, 40.00 Set a quarter section post with trench, from which A Black Oak, 10 in. dia. bears N. 2 E. 635 links dist. No other tree convenient to mark, 80.00 To point for corner of sections 33, 34, 3 and 4, Drove charred stakes, raised mounds with trenches, as per instructions, from which A Bur Oak, 16 in. dia. bears N. 31 E. 344 links, and A Hickory, 12 in. dia. bears S. 43 W. 231 links, No other trees convenient to mark, Land level, rich and good for farming, Timber, some scattering Oak and Walnut.
	West, on a true line along the South Boundary of section 33, Variation 18° 25' East, 37.51 A Black Oak, 24 in. dia. 40.00 Set a post for quarter section corner, from which A Black Oak, 18 in. dia. bears N. 25 E. 32 links dist. A White Oak, 15 in. dia. bears N. 43 W. 22 links dist. 62.00 To foot of steep hill, bears N. E. and S. W. 80.00 Set a post for corner to sections 32, 33, 4 and 5, from which A White Oak, 15 in. dia. bears N. 23 E. 27 links dist. A Black Oak, 20 in. dia. bears N. 82 W. 75 links dist. A Bur Oak, 20 in. dia. bears S. 37 W. 92 links dist. A White Oak, 24 in. dia. bears S. 26 E. 42 links dist. Land gently rolling; good rich land for farming, Timber, Black and White Oak, Hickory and Ash.
	West, on a true line along the South Boundary of section 32, Variation 18° 25' East, 37.50 A creek 20 links wide, runs North, 40.00 Set a granite stone 14 in. long, 10 in. wide, and 4 in. thick, for quarter section corner from which

South Boundary, T. 25 N. R. 2 W. Willamette Meridian.

CHAINS.	
76.00	A Maple, 20 in. dia. bears N. 41 E. 25 links distant, A Birch, 24 in. dia. bears N. 35 W. 22 links distant, To S. E. edge of swamp, As it is impossible to establish <i>permanently</i> the corner to sections 31, 32, 5 and 6 in the swamp, I therefore at this point, 400 chains East of the true point for said section cor. raise a witness mound with trench, as per instructions, from which
80.00	A Black Oak, 20 in dia. bears N. 51 E. 115 links, A point in deep swamp for corner to sections 31, 32, 5 and 6, Land, rich bottom; <i>west</i> of creek part wet; <i>east</i> of creek good for farming, Timber, good; Oak, Hickory, and Walnut.
11.00	West, on a <i>true</i> line along the South Boundary of Section 31, Variation 18° 25' East, Leave swamp and rise bluff 30 feet high, bears N. and S.
40.00	Set post for quarter section corner, from which A Sugar Tree, 27 in dia. bears S. 81 W. 42 links dist. A Beech, 24 in. dia. bears S. 71 E. 24,
54.00	Foot of rocky bluff 30 feet high, bears N. E. and S. W.
57.50	A spring branch comes out at the foot of the bluff 5 links wide; runs N. W. into swamp,
61.00	Enter swamp; bears N. and S.
70.00	Leave swamp: bears N. S. The swamp contains about 15 acres, the greater part in section 31,
74.73	The corner to Townships 24 and 25 N. ranges 2 and 3 W. Land, except the swamp, rolling, good, rich soil, Timber, Sugar Tree, Beech, and Maple. January 25th. 1854.
	Between ranges 1 and 2 West S. 25 N. Willamette Meridian, From the corner to Townships 24 and 25 N. ranges 1 and 2 W. I run North, along the East Boundary of section 36, Variation 17° 51' E.
1.00	A brook 5 links wide, runs N. W.
18.00	To foot of hill, bearing N. W. and S. E.
20.00	To rocky bluff 50 feet high, bears N. W. and S. E.
40.00	Set a post for quarter section corner. from which A Beech, 13 in. dia. bears N. 36 E. 22 links dist. A Poplar, 20 in. dia. bears S. 39 E. 42 links dist.
55.00	To top of rocky bluff 40 feet high, bears N. W. and S. E.
57.00	To foot of bluff; enter level, rich land,
72.50	A brook 10 links wide, runs N. W.
80.00	Set a post for corner to sections 25, 36, 30, and 31, from which

Between Ranges 1 and 2 W. T. 25 N. Willamette Meridian.

CHAINS.	
	A Birch, 24 in. dia. bears N. 20 E. 49 links dist. A Sugar Tree, 12 in. dia. bears N. 81 W. 25 links dist. A White Oak, 9 in. dia. bears S. 40 W. 60 links dist. A Poplar, 15 in. dia. bears S. 38 E. 12 links dist. Land, North and South parts rich and good for farming; middle part broken, 3d rate; Timber, Beech, Sugar Tree, Poplar, and White Oak.
	North, on the East Boundary of section 25, Variation 18° East.
5.51	A Maple, 20 in. dia.
6.00	To foot of hill, rises moderately, bears E and N. W.
40.00	Set quarter section stone (a rose quartz) 15 inches long, 12 inches wide, and 3 inches thick, (on steep side hill, slopes West,) from which A Poplar, 40 in. dia. bears N. 40 W. 10 links dist. A Beech. 9 in. dia. bears S. 42 W. 11 links dist.
73.21	A White Oak, 20 in. dia.
80.00	Set a post for corner of sections 24, 25, 19 and 30, from which A Beech, 20 in. dia. bears N. 64 E. 41 links dist. A White Oak, 10 in. dia. bears N. 30 W. 13 links dist. A Beech, 12 in. dia. bears S. 32 W. 26 links dist. A White Oak, 11 in. dia. bears S. 34 E. 48 links dist. Land rolling; good soil; nearly 1st rate, Timber, Sugar Tree, Beech, Walnut, Elm, and White Oak.
	North, on the East Boundary of section 24, Variation 17° 55' East,
21.17	A White Walnut, 20 in. dia.
40.00	Set a quarter section post, from which A Buckeye, 14 in. dia. bears N. 39 E. 27 links dist. A Buckeye, 10 in. dia. bears S. 48 W. 6 links dist.
44.00	The road (at the foot of the bluff) from Williamsburg to Astoria, bears East and West,
49.00	Elk creek, 150 links wide, gentle current, runs West,
57.10	A brook, 10 links wide, runs S. W.
59.67	A Black Oak, 24 in. dia.
65.50	Leave creek bottom and enter upland, bears E. and W.
80.00	Set a lime stone, 16 in. long, 14 wide, and 3 in. thick, for corner to sections 13, 24, 18 and 19, from which A Beech, 12 in. dia. bears N. 30 E. 50 links dist. A Walnut, 9 in. dia. bears N. 18 W. 29 links dist. A Walnut, 8 in. dia. bears S. 8 W. 51 links dist. A Beech, 6 in. dia. bears S. 20 E. 40 links dist. Land, except creek bottom, rolling; good, rich soil. The bottom, dry and rich—not subject to inundation, Timber, good; Walnut, Beech, Maple, Ash and Hickory.

Between Ranges 1 and 2 W. T. 25th N. Willamette Meridian.

CHAINS.	North, on the East Boundary of section 13, Variation 17° 55' East,
14.00	A White Oak, 24 in. dia.
21.00	Enter high broken ridges, bearing East and N. W.
40.00	Set a post for quarter section corner, from which A Cherry, 10 in. dia. bears N. 35 W. 2 links dist. A Cherry, 10 in. dia. bears S. 52 E. 21 links dist.
43.71	A Bur Oak, 30 in. dia.
80.00	Set a post for corner to sections 12, 13, 7 and 18, from which A Hickory, 15 in. dia. bears N. 40 E. 14 links dist. A Hickory, 20 in. dia. bears N. 39 W. 38 links dist. A Beech, 12 in. dia. bears S. 36 W. 16 links dist. A Sugar Tree, 10 in. dia. bears S. 42 E. 23 links dist. Land (except 21.00 chains, South part) high, broken, and mountainous, Timber, Beech, Hickory, Sugar Tree, and Blackjack.
	North, on the East Boundary of section 12, Variation 17° 55' East,
7.26	A Black Oak, 24 in. dia.
40.00	Set a post for quarter section corner, from which A White Ash, 10 in. dia. bears N. 35 W. 15 links dist. An Elm, 10 in. dia. bears S. 83 E. 2 links dist.
68.00	The foot of the mountain bears East and N. W.
80.00	Set a post on the top of eastern extremity of mountain, 300 feet high, for corner to sections 1, 12, 6 and 7, from which An Elm, 12 in. dia. bears N. 46 E. 30 links dist. A Beech, 10 in. dia. bears N. 40 W. 28 links dist. A Hickory, 10 in. dia. bears S. 55 W. 40 links dist. A Beech, 10 in. dia. bears S. 40 E. 6 links dist. Land mountainous and broken, Timber, Hickory, White Oak, Black Oak, Beech, and Ash.
	North, on the East Boundary of section 1, Variation 17° 55' East,
9.00	The foot of mountain bears East and West,
25.37	A White Oak, 16 in. dia.
40.00	Set a post in deep ravine bearing S. W. for quarter section corner, from which A Poplar, 9 in. dia. bears N. 76 E. 7 links dist. A Sugar Tree, 9 in. dia. bears S. 22 E. 15 links dist.
44.00	Leave timber and enter prairie, bears E. and N. W.
80.00	To a point for corner to Townships 25 and 26 N. Ranges 1 and 2 W. Drove charred stake, and raised a mound with trench, as per instructions, and planted N. W. 4 Chesnuts, S. W. 2 Hickory Nuts, N. E. 4 Cherry Stones, and S. E. 4 White

Between Ranges 2 and 3 W. T. 25 N. Willamette Meridian.

CHAINS.	Land, South of prairie, mountainous and broken; prairie good for farming, Timber, Sugar Tree, Cedar, and Pine. January 26th, 1854.
	From the corner to Townships 24 and 25 N. Ranges 2 and 3 West, I run North, on the Range line between sections 31 and 36, Variation 18° 56' East,
8.56	Set a post on the left bank of Chickeeles river, for corner to fractional sections 31 and 36, from which A Hackberry, 11 in. dia. bears N. 50 E. 11 links dist. A Sycamore, 60 in. dia. bears S. 15 W. 24 links dist. I now cause a flag to be set on the right bank of the river, and in the line between sections 31 and 36. I now cross the river, and from a point on the right bank thereof, West of the corner just established on the left bank, I run North, on an offset line, 25 chains and 94 links, to a point 8 chains and 56 links West of the flag. I now set a post in the place of the flag, for corner to fractional sections 31 and 36, from which A Beech, 10 in. dia. bears N. 2 E. 12 links dist. A Black Oak, 12 in. dia. bears N. 80 W. 16 links dist.
34.50	The corner above described,
40.00	Set a post for quarter section corner, from which A Bur Oak, 20 in. dia. bears N. 37 E. 26 links dist. A Black Oak, 24 in. dia. bears S. 75 W. 21 links dist.
43.41	A Black Walnut, 30 in. dia.
80.00	Set a post for corner to sections 30, 31, 25 and 36, from which A Beech, 14 in. dia. bears N. 20 E. 14 links dist. A Hickory, 9 in. dia. bears N. 25 W. 12 links dist. A Beech, 16 in. dia. bears S. 40 W. 16 links dist. A White Oak, 10 in. dia. bears S. 44 E. 20 links dist. Land level; rich bottom; not subject to inundation, Timber, White and Black Oak, Beech, Hickory, and Ash.
	North, between sections 25 and 30, Variation 18° 50 East,
27.73	Set a post for corner to fractional sections 25 and 30 on the right bank of Chickeeles river, a navigable stream, which here runs S. E. from which A Willow, 6 in. dia. bears S. 37 W. 55 links dist. A Maple, 20 in. dia. bears S. 30 E. 11 links dist. I now cause a flag to be set on the left bank of the river, and in the line between sections 25 and 30. From the above corner I run West 333 chains to a point from which the flag bears N. 16° 30' E. which gives for the distance across

Between Ranges 2 and 3 W. T. 25. N. Willamette Meridian.

CHAINS.	the river on the line 11.27 chains, to which add 27.73, makes,
39.00	To the flag on the bank, I here set a post for corner to fractional sections 25 and 30, from which A Hickory, 8 in. dia. bears N. 44 E. 17 links dist. A White Oak, 8 in. dia. bears N. 15 W. 8 links dist.
40.00	Set a post for quarter section corner, from which A Hickory, 9 in. dia. bears N. 16 E. 16 links dist. A Buckeye, 10 in. dia. bears S. 16 E. 18 links dist.
43.71	A Hickory, 24 in. dia.
80.00	Set a post for corner to sections 19, 30, 24, 25, from which An Elm, 6 in. dia. bears N. 82 E. 25 links dist. A Sugar Tree, 14 in. dia. bears N. 49 W. 4 links dist. An Elm, 9 in. dia. bears S. 42 W. 30 links dist. A Sugar Tree, 10 in. dia. bears S. 55 E. 45 links dist.
	Land good; rich bottom, 1st rate, Timber, Hickory, Elm, Buckeye, Sugar Tree, and Ash;
	North, between sections 19 and 24, Variation 18° 50' East,
32.50	A Hickory, 20 in. dia. on the left bank of Chickeeles river mark it for corner to fractional sections 19 and 24, from which A Hackberry, 20 in. dia. bears S. 13 W. 27 links dist. A Black Oak, 24 in. dia. bears S. 27 E. 31 links dist.
	I now cause a flag to be set on the right bank of the river, and in the line between sections 19 and 24, and from the corner run a base East 5.90 chains to a point from which the flag bears N. 17 W. continue the base East to a point 9.00 chains East of the corner on the river bank, from which the flag bears N. 25° 15' W. which gives by calculation as the mean result of the two observations for the distance across the river on the line between sections 19 and 24, 19.30 chains, to which add 32.50 chains, the distance to the river, makes
51.80	To the flag on the right bank of the river; I here set a post for corner to fractional sections 19 and 24, from which A Beech, 12 in. dia. bears N. 24 E. 39 links dist. A Beech, 14 in. dia. bears S. 55 W. 120 links dist.
	NOTE.—The point for quarter section corner falling in the river, it cannot therefore be established,
55.74	A Black Oak, 30 inches diameter,
80.00	Set a post for corner to sections 18, 19, 13, and 24, from which A White Oak, 18 in. dia. bears N. 55 E. 24 links dist. A White Oak, 17 in. dia. bears N. 64 W. 18 links dist. A Red Oak, 27 in. dia. bears S. 26 W. 20 links dist. A Red Oak, 15 in. dia. bears S. 90 E. 40 links dist.

Between Ranges 2 and 3 W. T. 25 N. Willamette Meridian.

CHAINS.	Land good; rich bottom; not subject to inundation, Timber, various kinds of Oak, Beech, Hickory, and Ash; undergrowth same, and vines.
	North, between sections 13 and 18, Variation 18° 53' East,
5.00	Leave bottom and enter upland; bears N. E. and S. W.
21.88	A Red Oak, 20 in. dia.
38.60	A White Oak, 24 in. dia.
40.00	Set a post for quarter section corner, from which A White Oak, 22 in. dia. bears N. 27 W. 27 links dist. A White Oak, 23 in. dia. bears S. 28 E. 92 links dist.
46.50	A road from Williamsburg bears East and West,
68.37	A Black Walnut, 21 in. dia.
80.00	Set a post for corner to sections 7, 18, 12, and 13, from which A White Oak, 12 in. dia. bears N. 55 E. 68 links dist. A Black Oak, 8 in. dia. bears N. 53 W. 40 links dist. A Black Oak, 16 in. dia. bears S. 40 W. 55 links dist. A Red Oak, 10 in. dia. bears S. 44 E. 50 links dist.
	Land rolling, and next the bottom broken; soil 2d rate, Timber good; various kinds of Oak and Hickory.
	North, between sections 7 and 12, Variation 18° 53' East,
15.18	A White Oak, 15 in. dia.
30.26	A White Oak, 21 in. dia.
40.00	Set a post for quarter section corner, from which A White Oak, 12 in. dia. bears S. 13 W. 60 links dist. A White Oak, 15 in. dia. bears S. 35 E. 55 links dist.
68.37	A Black Walnut, 21 in. dia.
80.00	Set a post for corner to sections 6, 7, 1, and 12, from which A White Oak, 17 in. dia. bears N. 58 E. 60 links dist. A White Oak, 18 in. dia. bears N. 54 W. 51 links dist. A White Oak, 18 in. dia. bears S. 51 W. 20 links dist. A Hickory, 14 in. dia. bears S. 64 E. 42 links dist.
	Land gently rolling, 2d rate. Timber, Oak and Hickory; undergrowth, Oak and Hazel.
	North, between sections 1 and 6, Variation 18° 53' East,
3.00	Enter stony barrens; timber scattering; bears East and West,
25.31	A Blackjack, 12 in. dia.
40.00	Set a quartz stone, 13 in. long, 12 in. wide, and 4 in. thick, for quarter section corner, with trench, as per instructions, from which A Blackjack, 20 in. dia. bears S. 44 E. 95 links dist. No other tree convenient to mark,
45.00	Leave stony barrens, bears East and West,

Between Townships 25 and 26 N. R. 2 W. Willamette Meridian.

CHAINS.	
61.11	A Hickory, 10 in. dia. Here leave timber and enter prairie, bearing West and N. E.
80.00	Set a granite stone, 18 in. long, 12 in. wide, and 6 inches thick, for corner to Townships 25 and 26 North, Ranges 2 and 3 West; raise a stone mound, with trench, as per instructions, Land broken and stony; too poor for cultivation, Timber, scattering and poor; Blackjack and Hickory. January 27th, 1851.
From the corner to Townships 25 and 26 N. Ranges 2 and 3 West, I run East, on a <i>random</i> line between said Townships, the variation of my compass being 18° 41' E. I set temporary half-mile and mile posts at 40.00 and 80.00 chains, At 160.09 intersected the right bank of Chickeeles river, a navigable stream, where set a temporary post; obtain the distance across the river on the line by causing my flag to be set on the left bank of the river, in said line, From the temporary post on the right bank, I run North 7 chains 63 links to a point; thence East, on an offset line, and at 30.00 chains a point North of the flag standing on the left bank of the river, set a temporary post in the place of the flag, I find the Township line to be 5 miles 76 chains 53 links, and the falling to be 25 links North of the township corner, The correction for the true line will therefore be 3 chains 47 links West and 4.2 links South per mile.	
From the corner to Townships 25 and 26 N. Ranges 1 and 2 West, I run West, on a <i>true</i> line between sections 1 and 36, Variation 18° 39' East,	
20.00	Leave prairie and enter scattering timber; bears N. and S.
40.00	Set a post for quarter section corner, from which A Beech, 24 in. dia. bears N. 11 E. 38 links dist. A Beech, 9 in. dia. bears S. 9 W. 19 links dist.
43.71	A Black Walnut, 30 in. dia.
80.00	Set a sandstone, 16 in. long, 12 in. wide, and 3 in. thick, for corner to sections 1, 2, 35 and 36, from which A Buckeye, 9 in. dia. bears N. 66 E. 15 links dist. An Elm, 20 in dia. bears N. 4 W. 10 links dist. An Elm, 36 in dia. bears S. 65 W. 8 links dist. A Buckeye, 10 in. dia. bears S. 40 E. 20 links dist. Land level, or gently rolling, and 1st rate, Timber, scattering next the prairies; Elm, Buckeye, Beech, Walnut, and Oak.

Between Townships 25 and 26 N. Range 2 W. Willamette Meridian.

CHAINS.	
West, on a <i>true</i> line between sections 2 and 35, Variation 18° 39' East,	
27.13	A White Oak, 24 in. dia.
40.00	Set a post for quarter section corner, from which A White Oak, 9 in. dia. bears N. 24 E. 28 links dist. A Buckeye, 12 in. dia. bears S. 48 W. 9 links dist.
75.59	A Black Oak, 24 in. dia.
80.00	Set a post for corner to sections 2, 3, 34 and 35, from which A Sugar Tree, 15 in. dia. bears N. 46 E. 15 links dist. No tree convenient in section 34, A Beech, 16 in. dia. bears S. 35 W. 16 links dist. A Sugar Tree, 14 in. dia. bears S. 30 E. 14 links dist. Land gently rolling, and 1st rate, Timber, good; Elm, Buckeye, Beech, Walnut, and Oak,
West, on a <i>true</i> line between sections 3 and 34, Variation 18° 39' East.	
9.00	Enter wet prairie; bears N. and S.
16.00	A beautiful spring branch, 5 links wide, runs S. W.
22.00	Leave prairie; bears N. E. and S. W.
31.27	A Black Oak, 20 in. dia.
40.00	Set a post for quarter section corner, from which A White Walnut, 16 in. dia. bears N. 64 E. 7 links dist. A White Walnut, 12 in. dia. bears S. 73 W. 31 links dist.
41.33	A White Oak, 30 in. dia.
74.52	A point 4 links South of a Black Oak, 24 in. dia.; mark it by cutting 2 notches South side,
75.00	Leave timber and enter a narrow strip of prairie; bears N. W. and S. E.
80.00	A point for corner to sections 3, 4, 33 and 34, drove a charred stake, and raised a mound, with trench, as per instructions, from which A White Oak, 20 in. dia. bears N. 73 E. 540 links dist. A Black Oak, 30 in. dia. bears S. 76 E. 613 links dist. Land gently rolling; 1st rate, Timber, White and Black Oak, Walnut and Sugar Tree.
West, on a <i>true</i> line between sections 4 and 33, Variation 18° 39' East,	
7.50	Leave prairie; bears N. W. and S. E.
21.50	A spring branch, 15 links wide, runs N. W.
40.00	A Black Walnut, 30 in. dia.; mark it for quarter section corner, from which A Buckeye, 9 in. dia. bears S. 45 E. 11 links dist. A Black Walnut, 20 in. dia. bears N. 29 W. 25 links dist.
41 40	Leave upland and enter river bottom; bears N. E. and S. W.
46.44	Set a post on the left bank of Chickeeles river, for corner to fractional sections 4 and 33, from which

Between Townships 25 and 26 N. R. 2 W. Willamette Meridian.

CHAINS.	An Elm, 8 in. dia. bears N. 71 E. 5 links dist. An Elm, 10 in. dia. bears S. 19 W. 6 links dist. The line running in the river, the distance on the <i>random</i> line was obtained on an offset by running <i>North</i> from the temporary post on the right bank 7 chains 63 links to a point thence <i>East</i> 30.00 chains, and coming back to <i>true</i> line on the left bank of the river,
76.44	Set a post on the right bank of the river for corner to fractional sections 4 and 33, from which A Cherry, 6 in. dia. bears N. 61 E. 17 links dist. A Sugar Tree, 20 in. dia. bears S. 75 W. 20 links dist.
76.64	A Sugar Tree, 23 in. dia.
80.00	Set a post for corner to sections 4, 5, 32 and 33, from which A Hackberry, 7 in. dia. bears N. 67 E. 17 links dist. A Sugar Tree, 20 in. dia. bears N. 71 W. 43 links dist. A Locust, 14 in. dia. bears S. 30 W. 16 links dist. A Beech, 20 in. dia. bears S. 20 E. 50 links dist. Land, East of bottom, rolling; good soil; the bottom subject to inundation 4 feet, Timber, on upland, Oak; in bottom, Sugar, Cherry, and Hackberry.
	West, on a <i>true</i> line between sections 5 and 32, Variation 18° 39' East,
24.40	A White Oak, 16 in. dia. Here leave bottom and enter hills; bears N. E. and S. W.
40.00	Set a post for quarter section corner, from which A Hickory, 18 in. dia. bears N. 88 E. 40 links dist. A Mulberry, 14 in. dia. bears S. 69 W. 103 links dist.
42.73	A Black Ash, 15 in. dia.
80.00	Set a post for corner to sections 5, 6, 31 and 32, from which A Sugar Tree, 20 in. dia. bears N. 89 E. 60 links dist. An Elm, 14 in. dia. bears N. 12 W. 24 links dist. An Elm, 15 in. dia. bears S. 14 W. 23 links dist. A Sugar Tree, 16 in. dia. bears S. 15 E. 26 links dist. Land gently rolling, and 1st rate; the bottom level, Timber, Sugar Tree, Walnut, and Oak; undergrowth, same and Spice.
	West, on a <i>true</i> line between sections 6 and 31, Variation 18° 39' East,
8.00	To swamp of about 15 acres; bears N. E. and S. W.
18.00	Leave swamp; bears N. E. and S. W.; the line passes through the middle of the swamp,
18.26	A Red Oak, 30 in. dia. on N. W. bank of swamp,
34.30	A Hickory, 18 in. dia.
40.00	Set a post for quarter section corner, from which A Bur Oak, 27 in. dia. bears N. 49 E. 46 links dist.

Between Townships 25 and 26 N. R. 2 W. Willamette Meridian.

CHAINS.	A Sugar Tree, 20 in. dia. bears N. 56 W. 60 links dist. No tree convenient <i>South</i> of the line,
48.65	A stream 14 links wide runs South,
57.40	A White Oak, 28 in. dia.
61.00	Enter prairie; bears N. E. and S. W.
76.53	To the established corner to Townships 25 and 26 N. Ranges 2 and 3 West. Land level; 1st rate for farming, Timber, good; various kinds of Oak, Hickory, and Sugar Tree; undergrowth, Hazel, Hickory, and Vines.

GENERAL DESCRIPTION.

This Township contains a large amount of first rate land for farming. It is well timbered with the various kinds of Oak; Hickory, Sugar Tree, Walnut, Beech and Ash.

Chickeeles river is navigable for small boats in low-water, and does not often overflow its banks, which are from ten to fifteen feet high.

The Township will admit of a large settlement, and should therefore be subdivided.

Township 25 N. Range 2 W. Willamette Meridian.

B.

Field Notes of the subdivision lines and meanders of Chickeeles river
in Township 25 N. R. 2 W. Willamette Meridian.

CHAINS.	To determine the proper adjustment of my compass for subdividing this Township, I commence at the corner to Townships 24 and 25 N. R. 1 and 2 W., and run North, on a blank line along the East Boundary of section 36, Variation 17° 51' East,
40.05	To a point 5 links West of the quarter section corner,
80.09	To a point 12 links West of the corner to sections 25 and 36, To retrace this line or run parallel thereto, my compass must be adjusted to a variation of 17° 46' East. Subdivision commenced February 1, 1854 From the corner to sections 1, 2, 35 and 36 on the South Boundary of the Township, I run North, between sections 35 and 36, Variation 17° 46' East,
9.19	A Beech, 30 in. dia.
29.97	A Beech, 30 in. dia.
40.00	Set a post for quarter section corner, from which A Beech, 8 in. dia. bears N. 23 W. 45 links dist. A Beech, 15 in. dia. bears S. 48 E. 12 links dist.
51.00	A Beech, 18 in. dia.
76.00	A Sugar Tree, 30 in. dia.
80.00	Set a post for corner to sections 25, 26, 35 and 36, from which A Beech, 28 in. dia. bears N. 60 E. 45 links dist. A Beech, 24 in. dia. bears N. 62 W. 17 links dist. A Poplar, 20 in. dia. bears S. 70 W. 50 links dist. A Poplar, 36 in. dia. bears S. 66 E. 34 links dist. Land level; 2d rate, Timber, Poplar, Beech, Sugar Tree, and some Oak; undergrowth, same and hazel.
	East, on a <i>random</i> line between sections 25 and 36, Variation 17° 46' East,
9.00	A brook, 20 links wide, runs north,
15.00	To foot of hills bears N. and S.
40.00	Set a post for temporary quarter section corner
55.00	To opposite foot of hill, bears N. and S.
72.00	A brook, 15 links wide runs North,
80.00	Intersected East Boundary at post corner to sections 25 and 36, from which corner I run West, on a <i>true</i> line between sections 25 and 36, Variation 17° 46' East,
40.00	Set a post on top of hill bears N. and S. from which A Hickory, 14 in. dia. bears N. 60 E. 27 links dist.

CHAINS.	A Beech, 15 in dia. bears S. 74 W. 9 links dist.
80.00	The corner to sections 25, 26, 35 and 36, Land, east and west parts level, 1st rate; middle part broken, 3d rate, Timber, Beech, Oak, Ash, &c.; undergrowth, same and Spice in the branch bottoms.
	North, between sections 25 and 26, Variation 17° 46' East,
7.00	A Poplar, 40 in. dia.
17.20	A brook, 25 links wide, runs N. W.
18.05	A Walnut, 30 in. dia.
23.44	A brook, 25 links wide, runs N. E.
40.00	Set a post for quarter section corner, from which A Bur Oak, 36 in. dia. bears N. 42 E. 18 links dist. A Beech, 30 in. dia. bears S. 72 W. 9 links dist.
60.15	A Beech, 30 in. dia.
80.00	Set a post for corner to sections 23, 24, 25 and 26, from which A White Oak, 14 in. dia. bears N. 50 E. 40 links, A Sugar Tree, 12 in. dia. bears N. 14 W. 31 links dist. A White Oak, 18 in. dia. bears S. 38 W. 32 links dist. A Sugar Tree, 12 in. dia. bears S. 42 E. 14 links dist. Land level on the line, high ridge of hills through the middle of section 25 running N. and S. Timber, Beech, Walnut, Ash, Sugar Tree, &c.
	East, on a <i>random</i> line between sections 24 and 25, Variation 17° 46' East,
8.90	A stream, 30 links wide, rapid current, runs N. W.
12.00	To foot of hill, bears south and N. E.
40.00	Set a post for temporary quarter section corner,
48.00	To opposite foot of hill, bears South and N. W.
60.50	A stream, 30 links wide, runs N. soon turns N. W.
73.00	To foot of hill, rises moderately, bears S. and N. W.
80.12	Intersected East Boundary of the Township at the post corner to sections 24 and 25, from which corner I run West, on a <i>true</i> line between sections 24 and 25, Variation 17° 46' East,
40.06	Set a post for quarter section corner, from which A Beech, 18 in. dia. bears N. 74 W. 26 links dist. A Beech, 16 in. dia. bears S. 73 E. 22 links dist.
80.12	The corner to sections 23, 24, 25, 26, Land rolling between the branches; good, 2d rate; branch bottoms level, 1st rate, Timber, Walnut, Beech, Elm, and Oak; undergrowth, same and Spice.
	North, between sections 23 and 24, Variation 17° 46' East,
6.70	A White Oak, 20 in. dia.

Township 25 N. Range 2 W. Willamette Meridian.

CHAINS.	
9.65	A stream, 25 links wide, runs N. W.
13.50	Same stream, 25 links wide, runs N. E.
16.00	Same stream, 25 links wide, runs N. W.
40.00	Set a post near the South bank of a stream for quarter section corner, from which A Cottonwood, 18 in. dia. bears S. 7 W. 7 links dist. A White Walnut, 24 in. dia. bears S. 22 E. 4 links dist.
40.35	Elk Creek, 125 links wide, runs N. W. general course West. John Jones has a field on the North side of the creek and West of the line; his house is 2 chains South of the road and 2 chains East of the line,
54.00	To the road from Astoria to Williamsburg, bears E. and W.
58.00	Enter wet prairie, bears East and West,
68.00	Leave prairie and enter timber, bearing East and West, This prairie extends East into section 24 about 30 chains,
72.12	A White Oak, 30 in. dia.
75.00	Leave creek bottom and enter hills bearing East and West,
80.00	Set a post for corner to sections 13, 14, 23, 24, from which A White Walnut, 16 in. dia. bears N. 42 E. 15 links dist. A White Walnut, 24 in. dia. bears N. 59 W. 27 links dist. An Elm, 8 in. dia. bears S. 67 W. 16 links dist. A Black Oak, 14 in. dia. bears S. 38 E. 17 links dist. Land mostly level; 1st rate soil, Timber, Walnut, various kinds of Oak, Buckeye, and Hickory; undergrowth, same and Spice, February 1st, 1854.
East, on a <i>random</i> line between sections 13 and 24, Variation 17° 46' East,	
40.00	Set a post for temporary quarter section corner,
80.10	Intersected the East Boundary of Township 16 links South of post corner to sections 13 and 24, from which corner I run West, on a <i>true</i> line between sections 13 and 24, Variation 17° 53' East,
40.05	Set a post for quarter section corner, from which A Sugar Tree, 30 in. dia. bears N. 80 W. 22 links dist. A White Oak, 16 in. dia. bears S. 53 E. 20 links dist.
80.10	The corner to sections 13, 14, 23, 24, Land mostly rolling; good rich soil; 1st rate, Timber, Walnut, Sugar Tree, Oak, Elm, and Buckeye; undergrowth, same and Spice.
North, between sections 13 and 14, Variation 17° 46' East,	
117	A White Oak. 30 in. dia.

Township 25 N. Range 2 W. Willamette Meridian.

CHAINS.	
22.15	A Beech, 30 in. dia.
40.00	Set a post for quarter section corner, from which A Beech, 24 in. dia. bears N. 66 W. 6 links dist. A Beech, 20 in. dia. bears S. 45 E. 40 links dist.
52.25	A Beech, 24 in. dia.
62.61	A Bur Oak, 30 in. dia.
80.00	Set a post for corner to sections 11, 12, 13, 14, from which A Black Oak, 26 in. dia. bears N. 53 E. 10 links dist. A Black Oak, 21 in. dia. bears N. 20 W. 35 links dist. A Sugar Tree, 30 in. dia. bears S. 32 W. 25 links dist. A White Oak, 20 in. dia. bears S. 24 E. 20 links dist. Land gently rolling; good, 2d rate, Timber, Beech, Oak, and Ash; undergrowth, same and Hazel.
East, on a <i>random</i> line between sections 12 and 13, Variation 17° 46' East,	
20.50	Foot of hills, and enter broken ridges bearing North and South,
40.00	Set a post for temporary quarter section corner,
80.10	Intersected East Boundary 13 links North of post corner to sections 12 and 13, from which corner I run West, on a <i>true</i> line between sections 12 and 13, Variation 17° 40' East,
40.05	Set a post for quarter section corner, from which An Elm, 24 in. dia. bears N. 51 E. 50 links dist. A Beech, 18 in. dia. bears S. 51 W. 29 links dist.
80.10	The corner to sections 11, 12, 13, 14, Land West 20 chains; gently rolling; good, 2d rate; the balance high, broken ridges, Timber, Beech, Black Oak, and White Oak; undergrowth, same and Hazel.
North, between sections 11 and 12, Variation 17° 46' East,	
10.81	An Elm, 15 in. dia.
40.00	Set a post for quarter section corner, from which A Beech, 30 in. dia. bears N. 33 W. 9 links dist. A Beech, 20 in. dia. bears S. 64 W. 20 links dist.
52.25	A Beech, 24 in. dia.
62.61	A Black Oak, 30 in. dia.
75.40	A spring branch, 10 links wide, runs West,
80.00	Set a post for corner to sections 1, 2, 11 and 12, from which A Poplar, 32 in. dia. bears N. 41 E. 30 links dist. A Poplar, 36 in. dia. bears N. 43 W. 25 links dist. A Sugar Tree, 30 in. dia. bears S. 32 W. 25 links dist. A Sugar Tree, 21 in. dia. bears S. 35 E. 40 links dist. Land level; good, 2d rate, Timber, Sugar Tree, Poplar, Walnut, and Oak; undergrowth, same and Hazel.

Township 25 N. Range 2 W. Willamette Meridian.

CHAINS.	East, on a <i>random</i> line between sections 1 and 12, Variation 17° 46' East,
23.00	Enter high, broken ridges, bearing N. E. and South,
40.00	Set a post for temporary quarter section corner,
42.50	A spring branch, 10 links wide, runs S. W.
63.00	To foot of high mountain; bears North and South,
80.24	Intersected the East Boundary of the Township 13 links North of post corner to sections 1 and 12, from which corner I run West, on a <i>true</i> line between sections 1 and 12, Variation 17° 40' East,
40.12	Set a post on top of narrow ridge, bearing North and South, for quarter section corner, from which A Sugar Tree, 20 in. dia. bears N. 20 E. 32 links dist. A Sugar Tree, 24 in. dia. bears S. 56 W. 25 links dist.
80.24	The corner to sections 1, 2, 11, 12, Land very broken and mountainous, Timber, Sugar Tree, Beech; various kinds of Oak and Hickory. On On this line, and towards the foot of the mountain, we discovered gold dust; and throughout the line we observed many specimens of what appeared to be rich auriferous quartz.
North, on a <i>random</i> line between sections 1 and 2, Variation 17° 46' East,	
40.00	Set a post for temporary quarter section corner,
80.11	Intersected the North Boundary 32 links East of corner to sections 1 and 2, from which corner I run South, on a <i>true</i> line between sections 1 and 2, Variation 18° 00' East,
40.11	Set a post for quarter section corner, from which A White Oak, 20 in. dia. bears N. 31 W. 65 links dist. A Sugar Tree, 14 in. dia. bears S. 49 E. 32 links dist.
80.11	The corner to sections 1, 2, 11, 12, Land level; good, rich soil, Timber, Walnut, Sugar Tree, Beech, and various kinds of Oak; open woods. <p style="text-align: right;">February 2d, 1854.</p>
North, between sections 34 and 35, Variation 17° 46' East,	
6.56	A Hickory, 36 in. dia.
23.00	To foot of hill; bears East and West,
34.58	A Walnut, 38 in. dia.
40.00	Set a post for quarter section corner, from which A Beech, 16 in. dia. bears S. 18 E. 13 links dist. A Beech, 10 in. dia. bears N. 69 W. 40 links dist.
50.00	A Maple, 24 in. dia.
75.86	An Ash, 24 in. dia.
80.00	Set a post for corner to sections 26, 27, 34 and 35, from which

Township 25 N. Range 2 W. Willamette Meridian.

CHAINS.	An Ash, 30 in. dia. bears N. 30 E. 24 links dist. An Ash, 36 in. dia. bears N. 52 W. 19 links dist. A Beech, 16 in. dia. bears S. 69 W. 41 links dist. A Beech, 14 in. dia. bears S. 67 E. 12 links dist. Land, South 23 chains, broken; the balance level, rich soil, Timber, Ash, Beech, Oak, and Hickory; undergrowth, same and Spice.
East, on a <i>random</i> line between sections 26 and 35, Variation 17° 46' East,	
40.00	Set a post for temporary quarter section corner,
80.08	Intersected N. and S. line 20 links North of the corner to sec- tions 25, 26, 35 and 36, from which corner I run West, on a <i>true</i> line between sections 26 and 35, Variation 17° 37' East,
40.04	Set a post for quarter section corner, from which A Beech, 14 in. dia. bears N. 56 E. 12 links dist. A Beech, 12 in. dia. bears S. 32 W. 32 links dist.
80.08	The corner to sections 26, 27, 34 and 35, Land level; good, rich soil, Timber, Beech, Elm, Ash, and Walnut.
North, between sections 26 and 27, Variation 17° 46' East,	
8.47	An Elm, 20 in. dia.
29.18	A Lynn, 34 in. dia.
40.00	Set a post for quarter section corner, from which A Sugar Tree, 14 in. dia. bears N. 54 E. 27 links dist. A Beech, 12 in. dia. bears S. 13 W. 31 links dist.
46.37	A Poplar, 40 in. dia.
60.48	A Black Oak, 36 in. dia.
80.00	Set a post for corner to sections 22, 23, 26, 27, from which A White Oak, 30 in. dia. bears N. 50 E. 13 links dist. A Walnut, 30 in. dia. bears N. 36 W. 14 links dist. A Walnut, 24 in. dia. bears S. 24 W. 16 links dist. An Ironwood, 8 in. dia. bears S. 32 E. 24 links dist. Land, south half, 2d rate; north half, 1st rate, Timber, Walnut, Poplar, White Oak, Beech and Hickory. About About 10 chains from this corner on the S. W. and on the left bank of Elk creek we discovered evidences of exten- sive ancient works, supposed to be fortifications, with many ancient mounds in the vicinity.
East, on a <i>random</i> line between sections 23 and 26, Variation 17° 46' East,	
40.00	Set a post for temporary quarter section corner,
48.00	A stream, 12 links wide, outlet to a lake in the middle of sec- tion 26, runs N. W.
80.00	Intersected North and South line 15 links North of post corner

Township 25 N. Range 2 W. Willamette Meridian.

CHAINS.	to sections 23, 24, 25, 26, from which corner I run West, on a <i>true</i> line between sections 23 and 26, Variation 17° 40' East,
40.00	Set a post for quarter section corner, from which A Beech, 16 in. dia. bears N. 72 W. 18 links dist. A Beech, 10 in. dia. bears S. 72 W. 16 links dist.
80.00	The corner to sections 22, 23, 26, 27, Land level, good; 2d rate soil, Timber, Beech, Sugar Tree, Elm and Hickory.
<i>Notes of the meanders of a small lake in section 26.</i>	
24.00	Begin at the quarter section corner on the line between sections 23 and 26, and run thence South To the North margin of the lake, where set a post for meander corner, from which A Beech, 14 in. dia. bears N. 45 E. 10 links dist. A Beech, 9 in. dia. bears N. 15 W. 14 links dist. Thence meander around the lake as follows: S. 53° E. 17.75 { At 75 links cross outlet to lake 10 links wide runs N. E. S. 3° E. 13.00 S. 30' W. 8.00 S. 65° W. 12.00 to a point previously determined 20.30 chains North of the quarter section corner on the line between sections 26 and 35, Set post meander corner, Maple, 16 in. dia. bears S. 15 W. 20 links dist. Ash, 12 in. dia. bears S. 21 E. 15 links dist. N. 63° W. 10.00 { In this vicinity we discovered remarkable fossil remains of animals well worthy the attention of naturalists. N. 13° W. 21.00 { N. 52 E. 17.30 to the place of beginning. This is a beautiful lake, with well-defined banks from 6 to 10 feet high. Land, 1st rate.
8.00	North, between sections 22 and 23, Variation 17° 46' East, Elk creek, 150 links wide, runs S. W.
24.20	Same creek, rapid current, rocky bed and banks, 150 links wide, runs S. E.
40.00	Set a post for quarter section corner, from which A Black Oak, 20 in. dia. bears N. 34 E. 48 links, A Black Oak, 20 in. dia. bears S. 9 W. 45 links,
41.60	Same creek, 150 links wide, rocky bed and banks, runs West. About 500 chains below the crossing of the line a stream 20 links wide comes in from the North, Two chains below the mouth of this stream the creek turns South

Township 25 N. Range 2 W. Willamette Meridian.

CHAINS.	Here is a very fine mill seat, the fall in the river being about 6 feet in the distance of three chains. Both banks of the creek about 10 feet high, composed principally of limestone of excellent quality,
47.00	Enter wet prairie near the West end, bearing N. W. and East,
65.00	Leave wet prairie, bearing East and West,
68.00	The road from Astoria to Williamsburg, bearing S. 80 E. and N. 60 W.
69.92	A White Oak, 18 in. dia.
70.50	Enter high, rolling land, bearing East and West,
80.00	Set a post for corner to sections 14, 15, 22, and 23, from which which An Elm, 16 in. dia. bears N. 27 E. 50 links dist. An Elm, 24 in. dia. bears N. 34 W. 45 links dist. A Sugar Tree, 18 in. dia. bears S. 60 W. 42 links dist. A Sugar Tree, 24 in. dia. bears S. 52 E. 23 links dist. Land, south of wet prairie at 47 chains, broken, 3d rate; the balance part wet, 2d rate, Timber, Elm, Sugar Tree, Oak, and Hickory, February 3d, 1854.
40.00	East, on a <i>random</i> line between sections 14 and 23, Variation 17° 46' East, Set a post for temporary quarter section corner, Intersected North and South line 14 links North of the corner to sections 13, 14, 23, and 24, from which corner I run West, on a <i>true</i> line between sections 14 and 23, Variation 17° 40' East,
40.07	Set a post for quarter section corner, from which, A Sugar Tree, 30 in. dia. bears N. 39 E. 31 links dist. A Mulberry, 12 in. dia. bears S. 26 W. 4 links dist.
80.14	To corner to sections 14, 15, 22, 23, Land gently rolling; good soil, Timber, Elm, Sugar Tree, Oak, and Mulberry.
14.14	North, between sections 14 and 15, Variation 17° 46' East, A Sugar Tree, 14 in. dia.
34.13	A White Oak, 22 in. dia.
40.00	Set a post for quarter section corner, from which A Beech, 24 in. dia. bears N. 45 W. 37 links dist. A Sugar Tree, 20 in. dia. bears S. 43 E. 74 links dist.
47.20	A Walnut, 27 in. dia.
61.84	A White Oak, 36 in. dia.
77.72	A stream, 25 links wide, rapid current, runs S. W.
80.00	Set a post for corner to sections 10, 11, 14, 15, from which A Burr Oak, 28 in. dia. bears N. 16 E. 40 links dist. A Black Oak, 30 in. dia. bears N. 17 W. 32 links dist.

Township 25 N. Range 2 W. Willamette Meridian.

CHAINS.	
	A White Oak, 14 in. dia. bears S. 15 W. 38 links dist. A Hickory, 15 in. dia. bears S. 12 E. 36, Land gently rolling; 2d rate. Timber, various kinds of Oak, Beech and Walnut; open woods.
	East, on a <i>random</i> line between sections 11 and 14, Variation 17° 46' East,
8.25	A stream, 25 links wide, runs S. W.
13.00	A stream, 10 links wide, runs N. W.
40.00	Set a post for temporary quarter section corner,
80.16	Intersected N. and S. line 20 links North of post corner to sections 11, 12, 13, 14, from which corner I run West, on a <i>true</i> line between sections 11 and 14, Variation 17° 37' East,
40.08	Set a post for quarter section corner, from which A Sugar Tree, 16 in. dia. bears N. 66 E. 35 links dist. A Sugar Tree, 14 in. dia. bears S. 44 W. 13 links dist.
80.16	To corner to sections 10, 11, 14, 15, Land rolling, but not broken; good soil. Timber good; various kinds of Oak, Beech, Sugar Tree, Elm and Ash.
	North, between sections 10 and 11, Variation 17° 40' East,
5.29	A White Oak, 24 in. dia.
39.16	A White Oak, 36 in. dia.
40.00	Set a post for quarter section corner, from which A Beech, 15 in. dia. bears N. 18 W. 42 links dist. A Beech, 18 in. dia. bears S. 62 E. 12 links dist.
45.17	A Sugar Tree, 27 in. dia.
63.79	A Sugar Tree, 30 in. dia.
71.12	A brook, 20 links wide, rapid current, gravelly bottom, runs West; soon turns South,
80.00	Set a post for corner to sections 2, 3, 10, 11, from which A Sugar Tree, 18 in. dia. bears N. 13 E. 61 links dist. A Beech, 24 in. dia. bears N. 48 W. 26 links dist. A White Oak, 13 in. dia. bears S. 39 W. 40 links dist. No tree in section 11 convenient to mark, Land gently rolling, good; 2d rate, Timber, various kinds of Oak, Beech, Walnut; open woods.
	East, on a <i>random</i> line between sections 2 and 11, Variation 17° 40' East,
18.36	A brook, 20 links wide, runs S. W.
40.00	Set a post for temporary quarter section corner,
80.10	Intersected N. and S. line 12 links North of the corner to sections 1, 2, 11, 12, from which corner I run West, on a <i>true</i> line between sections 2 and 11, Variation 17° 35' East,
40.05	Set a post for quarter section corner, from which ▲

Township 25 N. Range 2 W. Willamette Meridian.

CHAINS.	
	A Beech, 18 in. dia. bears N. 35 W. 5 links dist. A Beech, 14 in. dia. bears S. 47 E. 49 links dist.
80.10	The corner to sections 2, 3, 10, 11, Land gently rolling; soil good, Timber, Beech, Sugar Tree, Elm and Oak; West part brushy; East part open woods.
	North, on a <i>random</i> line between sections 2 and 3, Variation 17° 40' East,
40.00	Set a post for temporary quarter section corner,
80.00	Intersected the North Boundary of the Township 25 links East of the corner to sections 2 and 3, from which corner I run South, on a <i>true</i> line between sections 2 and 3, Variation 17° 51' East,
40.00	Set a post for quarter section corner, from which An Elm, 8 in. dia. bears N. 35 W. 5 links dist. A Hickory, 10 in. dia. bears S. 75 E. 18 links dist.
80.00	The corner to sections 2, 3, 10, 11, Land gently rolling; good, 2d rate, Timber, various kinds of Oak, Beech, Elm and Hickory; open woods. February 4, 1854.
	North, between sections 33 and 34, Variation 17° 46' East,
5.61	An Ash, 22 in. dia.
13.20	An Elm, 15 in. dia.
40.00	Set a sand stone, 15 in. long, 12 in. wide, and 4 in. thick, for quarter section corner, from which A Beech, 15 in. dia. bears N. 22 E. 22 links dist. A Beech, 24 in. dia bears S. 78 W. 15 links dist.
49.10	A Black Oak, 36 in. dia.
71.04	An Elm, 30 in. dia.
80.00	Set a post on high ridge bearing N. S. for corner to sections 27, 28, 33, 34, from which A White Oak, 14 in. dia bears N. 22 E. 18 links dist. A Beech, 8 in. dia. bears N. 48 W. 14 links dist. An Elm, 12 in. dia. bears S. 16 W. 42 links dist. A Beech, 10 in. dia. bears S. 74 E. 14 links dist. Land broken; poor soil; not fit for cultivation, Timber. Beech, Oak, Sugar Tree and Elm.
	East, on a <i>random</i> line between sections 27 and 34, Variation 17° 46' East,
18.00	To foot of hill bearing North and S. E.
40.00	Set a post for temporary quarter section corner,
48.20	A brook, 20 links wide, runs North,
50.20	A brook, 15 links wide, runs N. W.
79.90	Intersected N. and S. line 14 links North of the corner to sec-

Township 25 N. Range 2 W. Willamette Meridian.

CHAINS.	tions 26, 27, 34, and 35, from which corner I run West, on a <i>true</i> line between sections 27 and 34, Variation 17° 40' East,
39.95	Set a post for quarter section corner, from which A Sugar Tree, 15 in. dia. bears N. 32 W. 32 links dist A Sugar Tree, 15 in. dia. bears S. 52 E. 26 links dist.
79.90	The corner to sections 27, 28, 33, and 34, Land, east of hill, gently rolling; good soil, Timber, Sugar Tree, Elm, Oak, and Ash,
	North, between sections 27 and 28, Variation 17° 46' East,
2.11	A Black Oak, 30 in. dia.
20.42	An Elm, 36 in. dia.
34.00	To foot of hill bearing S. W. and S. E.
40.00	Set a post for quarter section corner, from which A Buckeye, 10 in. dia. bears N. 30 W. 6 links dist. A Poplar, 36 in. dia. bears S. 15 E. 38 links dist.
62.16	A Sugar Tree, 24 in. dia.
64.20	Elk creek, 200 links wide, rapid current; bluff bank 20 feet high; South side runs west; enter bottom after crossing creek,
80.00	Set a sandstone 16 in. long, 12 in. wide, and 6 in. thick, for corner to sections 21, 22, 27, 28, from which An Elm, 15 in. dia. bears N. 31 E. 14 links dist. A Beech, 14 in. dia. bears N. 43 W. 37 links dist. An Elm, 20 in. dia. bears S. 24 W. 24 links dist. A Beech, 24 in. dia. bears S. 20 E. 52 links dist. Land, South of creek, broken and rolling, 3d rate; North of creek rich bottom, Timber, Beech, Elm, various kinds of Oak and Hickory.
	East, on a <i>random</i> line between sections 22 and 27, Variation 17° 46' East,
40.00	Set a post for temporary quarter section corner,
75.70	Elk creek, 200 links wide, gentle current, gravelly bottom, runs S. W.
80.06	Intersected North and South line 15 links North of the corner to sections 22, 23, 26, and 27, from which corner I run West, on a <i>true</i> line between sections 22 and 27, Variation 17° 40' East,
40.03	Set a post for quarter section corner, from which An Elm, 14 in. dia. bears N. 50 E. 16 links dist. A Mulberry, 10 in. dia. bears S. 87 W. 43 links dist.
80.06	The corner to sections 21, 22, 27, 28, Land level; rich bottom, 1st rate, Timber, Elm, Beech, Oak, and Hickory,
	North, Between sections 21 and 22, Variation 17° 46' East,

Township 25 N. Range 2 W. Willamette Meridian.

CHAINS.	
3.15	A Walnut, 18 in. dia.
32.32	An Ash, 24 in. dia.
33.50	Set a post on the South bank of a lake of deep, clear water, for corner to fractional sections 21 and 22, from which A Maple, 16 in. dia. bears S. 33 W. 21 links dist. An Ash, 12 in. dia. bears S. 21 E. 34 links dist. To obtain the distance across the lake, I send my flagman around the west end thereof, who sets the flag on its North bank, and in the line between sections 21 and 22, I now run a base <i>West</i> (from the corner on South bank) 5.60 chains, to a point from which the flag bears N. 16° 15' E. and continue said base line West, and at 9 chains and 6 links, a point from which said flag bears N. 25° 15' E. and taking the mean between the results so ascertained, find for the distance across the lake, on the line between sections 21 and 22, 19 chains and 20 links, to which add 33.50 chains, makes
52.70	To the flag on the North bank of the lake, Here set a post for corner to fractional sections 21 and 22, from which An Ash, 16 in. dia. bears N. 21 E. 15 links dist. An Elm, 14 in. dia. bears N. 71 W. 23 links dist. The point for quarter section corner being in the lake, cannot be established,
56.11	An Elm, 36 in. dia.
80.00	Set a post for corner to sections 15, 16, 21, 22, from which A Black Oak, 12 in. dia. bears N. 83 E. 23 links dist. A Buckeye, 10 in. dia. bears N. 82 W. 17 links dist. A White Oak, 14 in. dia. bears S. 14 W. 14 links dist. A Black Oak, 15 in. dia. bears S. 28 E. 24 links dist. Land level; rich bottom; not subject to inundation, Timber, Elm, Oak, Hickory, and Ash.
	<i>Field notes of the meanders of Clear Lake.</i>
	Begin at the corner to fractional sections 21 and 22, on the North bank, and run thence, in section 22, as follows:
	East, 10.00 chains, thence
	N. 80 E. 12.00 " "
	S. 75 E. 5.00 " "
	S. 60 E. 5.00 " "
	S. 30 E. 5.00 " "
	S. 10 W. 6.00 " "
	S. 36 W. 8.00 " "
	S. 82 W. 10.00 " "
	West, 10.00 " "
	N. 89 W. 8.55 " to the corner to fractional sections 21 and 22, on the South bank of the lake. Thence in section 21

Township 25 N. Range 2 W. Willamette Meridian.

CHAINS.	
N. 75 W.	9.00 chains, thence
N. 87 W.	10.50 " "
N. 62 W.	8.00 " "
N. 43 W.	5.50 " "
N. 34 W.	4.20 " "
North,	5.00 " "
N. 35 E.	7.00 " "
N. 55 E.	8.00 " "
East,	5.00 " "
S. 75 E.	3.00 " "
S. 35 E.	6.50 " "
S. 67½ E.	11.10 " to the corner to fractional sections 21 and 22, on the North bank of the lake, and place of beginning,
	Land, around this lake, good, rich soil; banks from 8 to 10 feet high, except at the Western part, as far South as the outlet, where the land is level and wet,
	Timber, good Black Oak, Hickory, and Ash.
	Monday, February 6th, 1854.
	If the Deputy should find it more convenient to meander the lake before continuing the line North of it, he will do so.
	East, on a <i>random</i> line between sections 15 and 22, Variation 17° 46' East,
40.00	Set a post for temporary quarter section corner,
58.00	The road from Astoria to Williamsburg bearing N. W. and S. E.
65.50	A stream, 20 links wide, runs South,
79.94	Intersected North and South line 12 links North of the corner to sections 14, 15, 22, and 23, from which corner I run West, on a <i>true</i> line between sections 15 and 22, Variation 17° 41' East,
39.97	Set a post for quarter section corner, from which A Sugar Tree, 20 in. dia. bears N. 35 W. 21 links dist. A Lynn, 18 in. dia. bears S. 28 E. 81 links dist.
79.94	The corner to sections 15, 16, 21, 22, Land, gently rolling; good, rich soil, Timber, good; various kinds of Oak, Hickory, Ash, and Sugar Tree.
	North, between sections 15 and 16, Variation 17° 46' East,
4.68	An Elm, 24 in. dia.
13.00	Leave timber and enter high rolling prairie, bearing East and West,
16.75	The road from Astoria to Williamsburg bears N. 80 W. and S. 80 E.

Township 25 N. Range 2 W. Willamette Meridian.

CHAINS.	
40.00	Set a hard flint stone, which cannot be marked, for quarter section corner; said stone is 16 inches long, 12 inches wide, and 8 inches thick, and from which a cone White Oak, 16 in. dia. bears N. 42 W. 351 links dist. No other tree convenient to mark.
50.00	Enter John Orr's field, bearing N. W. and S. E.
55.00	A point 3 chains West of Orr's house,
61.00	Leave field bearing N. W. and S. E. This field contains about 10 acres, the line passing through the middle,
80.00	Set a post in mound, with trench, as per instructions, for corner to sections 9, 10, 15, 16, from which corner a granite boulder, four feet in diameter at the surface of the ground, and three feet high, bears N. 72 E. 257 links distant. I cut a (X) cross near the top, facing the corner, the cross-marks being four inches long and one-fourth of an inch deep. Land high, rolling prairie; good soil; not stony, but occasional boulders appear above the natural surface.
	East, on a <i>random</i> line between sections 10 and 15, Variation 17° 46' East,
40.00	Set a post for temporary quarter section corner,
46.50	Leave prairie and enter timber bearing North and S. 40 E.
61.40	A stream, 25 links wide, gentle current, muddy bottom, runs South,
79.86	Intersected N. and S. line at the post corner to sections 10, 11, 14, 15, from which corner I run West, on a <i>true</i> line between sections 10 and 15, Variation 17° 46' East,
39.93	Set a sand stone, 20 inches long, 12 inches wide, and 4 inches thick for quarter section corner, raise a mound 2 feet high West side of stone. From the stone a Bur Oak, 16 in. dia. in the Eastern edge of the timber, bears N. 75 E. 674 links distant.
79.86	The corner to sections 9, 10, 15, 16. Land; the prairie rolling; good soil; timber land level; 1st rate. Timber, Oak, Hickory and Ash.
	North, between sections 9 and 10, Variation 17° 46' East,
40.00	Set a post for quarter section corner, raise a mound with trench, as per instructions. A lone Bur Oak, 10 in. dia. bears S. 75 E. 530 links distant; no other tree near. This corner about 10 chains West of a grove of Oak and Hickory of about 15 acres. From this corner Jacob Fry's house in the North end of grove bears N. 45 E.
51.25	A point from which Fry's house bears East, a field of about 10 acres North of the house.

Township 25 N. Range 2 W. Willamette Meridian.

CHAINS.	
80.00	Deposited a quart of charcoal and set a post for corner to sections 3, 4, 9, 10, and raised a mound, as per instructions, and planted N. W. 4 White Oak acorns, S. W. Wild Cherry stones, N. E. Beech nuts, and S. E. a Butter nut. Land high, rolling prairie; good rich soil; fit for cultivation.
	East, on a <i>random</i> line between sections 3 and 10, Variation $17^{\circ} 46'$ East,
40.00	Set a post for temporary quarter section corner,
55.00	Leave prairie and enter timber, bearing N. and S.
79.90	Intersected N. and S. line 14 links South of the corner to sections 2, 3, 10, 11, from which corner I run West, on a <i>true</i> line between sections 3 and 10, Variation $17^{\circ} 52'$ East,
39.95	Set a sand stone, 16 inches long, 12 inches wide, and 4 inches thick for quarter section corner, from which a granite boulder 4 feet long E. and W. by $3\frac{1}{2}$ feet wide N. and S. and 2 feet high above ground, and marked $\frac{1}{4}$ with a pick, bears N. 31 E. 153 links distant; no other boulder in sight of this corner.
79.90	The corner to sections 3, 4, 9, 10, Land level; good rich soil, Timber, Elm, Beech, Maple, and Ash.
	North, on a <i>random</i> line between sections 3 and 4, Variation $17^{\circ} 46'$ East,
40.00	Set a post for temporary quarter section corner,
42.00	Leave prairie and enter timber, bearing S. E. and S. W.
55.15	A spring branch, 10 links wide, runs N. W.
66.50	Enter prairie, bearing N. W. and S. E.
79.95	Intersected the North Boundary of the Township 30 links East of the corner to sections 3 and 4, from which corner I run South, on a <i>true</i> line between sections 3 and 4, Variation $17^{\circ} 59'$ East,
39.95	Set a Mulberry post 6 inches diameter in the North point of prairie, from which A White Oak, 16 in. dia. bears N. 41 E. 195 links. A Black Oak, 20 in. dia. bears N. 37 W. 205 links.
79.95	The corner to sections 3, 4, 9, 10, Land level; good rich soil; fit for cultivation, Timber, Oak, Hickory, and Elm.

February 7th, 1854.

All traces of the corner to sections 4, 5, 32 and 33 on the South Boundary of the Township having disappeared, I restore and re-established said corner in the following manner, viz:
Begin at the quarter section corner the line between sections 4 and 33. One of the witness trees to this corner has fallen down, and the post is gone.

Township 25 N. Range 2 W. Willamette Meridian

CHAINS.	
	The Black Oak, 18 in. dia. bearing North 25 E. 32 links, standing and sound, I find also the Black Oak station tree, 24 in. dia. called for at 37.51 chains; and 2.49 chains West of the quarter section corner, set a <i>new</i> post at the point for quarter section corner, and mark for witness tree a White Oak, 20 in. dia. bears N. 34 W. 37 links dist. West, with the <i>old</i> marked line, Variation $18^{\circ} 25'$ East,
40.00	Set a post for temporary corner to sections 4, 5, 32 and 33,
80.06	To a point 7 links South of the quarter section corner on the line between sections 5 and 32. This corner agrees with its description, and from which I run East, on the <i>true</i> line between sections 5 and 32, Variation $18^{\circ} 22'$ East,
40.03	Set a lime stone 18 inches long, 12 inches wide, and 3 inches thick, for <i>re-established</i> corner to sections 4, 5, 32 and 33, from which A White Oak, 12 in. dia. bears N. 21 E. 41 links dist. A White Oak, 16 in. dia. bears N. 41 W. 21 links dist. A Black Oak, 18 in. dia. bears S. 17 W. 32 links dist. A Bur Oak, 20 in. dia. bears S. 21 E. 37 links dist.
	Thence between sections 4 and 33,
80.06	The quarter section corner on said line, The difference in measurement, being very small, will be rejected.
	North, between sections 32 and 33, Variation $17^{\circ} 40'$ East,
19.85	A Beech, 25 in. dia.
32.37	An Elm, 30 in. dia.
40.00	Set a post for quarter section corner, from which A Beech, 24 in. dia. bears N. 11 E. 30 links dist. A Sugar Tree, 20 in. dia. bears S. 40 W. 9 links dist.
48.75	A stream, 20 links wide, rapid current, runs East; general course N. E.
58.20	A Sugar Tree, 30 in. dia.
75.96	A Sugar Tree, 25 in. dia.
80.00	Set a post with trench for corner to sections 28, 29, 32 and 33, from which An Elm, 20 in. dia. bears N. 66 W. 29 links dist. A Beech, 10 in. dia. bears S. 16 E. 13 links dist.
	No other trees convenient to mark, Planted N. E. 4 Hickory nuts, and S. W. 4 Cherry stones, Land gently rolling; good rich soil, Timber, Oak, Elm, Beech, and Sugar Tree.

Township 25 N. Range 2 W. Willamette Meridian.

CHAINS.	East, on a <i>random</i> line between sections 28 and 33, Variation 17° 40' East,
19.50	A stream, 25 links wide, runs North; rapid current; the line crosses about two chains below the mouth of a beautiful spring branch 10 links wide; comes from the hills on the S. E.
40.00	Set a post for temporary quarter section corner,
60.00	To foot of hills bearing N. and S.
80.12	Intersected the N. and S. line 7 links North of the corner to 27, 28, 33 and 34, from which corner I run West, on a <i>true</i> line, between sections 28 and 33, Variation 17° 37' East,
40.06	Set a post for quarter section corner, from which A Hickory, 10 in. dia. bears N. 25 W. 22 links dist. An Elm, 24 in. dia. bears S. 9 W. 14 links dist.
80.12	The corner to sections 28, 29, 32, 33, Land, 20 chains, East part very broken; the balance gently rolling; good rich soil, Timber, Oak, Elm, Ash, and Sugar Tree.
	North, between sections 28 and 29, Variation 17° 40' East,
17.13	A Sugar Tree, 30 in. dia.
29.65	A Beech, 24 in. dia.
40.00	Set a post for quarter section corner, from which An Elm, 14 in. dia. bears N. 6 W. 200 links dist. A White Oak, 12 in. dia. bears S. 41 E. 122 links dist.
52.73	A Beech, 36 in. dia.
71.15	Top of limestone bluff, 20 feet high, on the South bank of Elk creek, 200 links wide, rapid current, gravelly bottom, runs West; soon turns S. W.
80.00	Enter low wet bottom on the right bank of creek, Set a post for corner to sections 20, 21, 28 29, from which A Hickory, 13 in. dia bears N. 30 E. 16 links dist. A Hickory, 18 in. dia. bears N. 32 W. 22 links dist. A Walnut, 17 in. dia. bears S. 48 W. 40 links dist. A Walnut, 26 in. dia. bears S. 56 E. 34 links dist. Land, South of creek, rolling; good, rich soil, Timber, Oak, Elm, Beech, and Sugar Tree; open woods; no undergrowth.
	East, on a <i>random</i> line between sections 21 and 28, Variation 17° 40' East,
23.00	A stream, 10 links wide, runs S. W.
40.00	Set a post for temporary quarter section corner,
43.20	A stream, 20 links wide, low, muddy banks and bottom, runs South,
80.18	Intersected North and South line 20 links North of the corner to sections 21. 22. 27. 28. from which corner I run

Township 25 N. Range 2 W. Willamette Meridian

	West, on a <i>true</i> line between sections 21 and 28, Variation 17° 31' East,
40.09	Set a post about 200 links North of the right bank of the creek for quarter section corner, from which A Sugar Tree, 14 in. dia. bears N. 57 E. 45 links dist. A Buckeye, 15 in. dia. bears S. 61 W. 61 links dist.
80.18	The corner to sections 20, 21, 28, 29, Land level, wet bottom; subject to inundation from 4 to 6 feet deep, Timber, Oak, Hickory, and Ash; no undergrowth.
	North, between sections 20 and 21, Variation 17° 40' East,
8.24	A Bur Oak, 24 in. dia.
28.94	An Ash, 15 in. dia. on the S. E. margin of a large lake, across which no sight can be had because of the water bushes around lake lying principally in section 20, with low, muddy banks; mark said tree for corner to fractional sections 20 and 21, from which A Red Oak, 15 in. dia. bears S. 35 W. 32 links dist. A Water Willow, 10 in. dia. bears S. 21 E. 12 links dist.
	NOTE.—The point for quarter section corner being in the lake, it cannot be established, I now run as follows around the East end of the lake in sec. 21. N. 35 E. 8 00 chains, thence N. 10 E. 6 50 " " N. 15 W. 5 50 " " N. 40 W. 6 70 " to a point in the line between sections 20 and 21, The northing on the 4 courses of meanders is 23.39 chains, to which add 28.94 chains, makes
52.33	To the point in the line between sections 20 and 21 on the N. E. bank of the lake. Here set a post for corner to fractional sections 20 and 21, from which An Elm, 20 in. dia. bears N. 22 E. 24 links dist. A Red Oak, 24 in. dia. bears N. 17 W. 21 links dist.
54.20	A stream, 25 links wide, gentle current, running S. W. into lake,
57.31	A Red Oak, 16 in. dia.
72.50	Leave level, rich bottom and enter upland, bearing E. and W.
80.00	Set a post for corner to sections 16, 17, 20, 21, from which, A Black Oak, 10 in. dia. bears N. 53 E. 53 links dist. A Beech, 14 in. dia. bears N. 16 W. 14 links dist. A Bur Oak, 12 in. dia. bears S. 8 W. 20 links dist. A Beech, 16 in. dia. bears S. 19 E. 15 links dist. Land mostly low, level, rich bottom; subject to inundation from 4 to 6 feet deep, Timber, Oak, Beech, Maple, and Ash; open woods, February 8th, 1854.

Township 25 N. Range 2 W. Willamette Meridian.

CHAINS.	East, on a <i>random</i> line between sections 16 and 21, Variation 17° 40' East,
18,90	A Brook, 10 links wide, runs South,
19,50	Same brook runs North,
21,55	Same brook runs South,
40,00	Set a post for temporary quarter section corner
61,50	Enter a small bushy swamp,
70,00	Leave swamp, which contains about 15 acres, and lies mostly in section 21,
80.20	Intersected N. and S. line 16 links North of the corner to sec- tions 15, 16, 21 and 22, from which corner I run West, on a <i>true</i> line between sections 16 and 21, Variation 17° 33' East,
40.10	Set a post for quarter section corner, from which A Beech, 30 in. dia. bears N. 19 W. 31 links dist. A Buckeye, 24 in. dia. bears S. 11 E. 29 links dist.
80.20	The corner to sections 16, 17, 20, 21, Land rolling; 2d rate; wet around swamp, Timber, Oak, Beech, Buckeye, and Hickory; thick undergrowth of same and Hazel.
	North, between sections 16 and 17, Variation 17° 40' East,
9.72	A Bur Oak, 30 in. dia.
26.84	A Bur Oak, 36 in. dia.
39.00	The road from Astoria to Williamsburg bearing N. 80 W. and S. 80 E.
40.00	Set a post for quarter section corner, from which A Lynn, 15 in. dia. bears N. 88 W. 17 links dist. A Black Oak, 18 in. dia. bears S. 76 E. 21 links dist.
54.20	A White Oak, 28 in. dia.
80.00	Set a post for corner to sections 8, 9, 16, 17, from which An Elm, 10 in. dia. bears N. 28 E. 5 links dist. A Black Oak, 10 in. dia. bears N. 13 W. 48 links dist. An Elm, 12 in. dia. bears S. 41 W. 42 links dist. A Bur Oak, 6 in. dia. bears S. 17 E. 105 links dist. Land gently rolling; good; 2d rate, Timber, good quality and open woods, Oak, Elm, Ash, and Hickory.
	East, on a <i>random</i> line between sections 9 and 16, Variation 17° 40' East,
40.00	Set a post for temporary quarter section corner,
45.00	Enter prairie, bearing N. and S.
81.20	Intersected the N. and S. line 22 links North of the corner to sections 9, 10, 15, 16; section 16 is therefore out of the proper limits, and I am of opinion that the error is in the

Township 25 N. Range 2 W. Willamette Meridian.

	measure of the line between sections 9 and 16; remeasure the line <i>East</i> of the temporary quarter section corner, and find it to be 40.18 chains. There was therefore an error of one chain in this part of the line, which brings section 16 within its proper limits. From the corner to sections 9, 10, 15, 16, I run West, on a <i>true</i> line between sections 9 and 16, Variation 17° 31' East,
40.10	Set a post for quarter section corner, from which A White Oak, 16 in. dia. bears N. 35 E. 32 links dist. A Bur Oak, 12 in. dia. bears S. 25 W. 21 links dist.
80.20	The corner to sections 8, 9, 16, 17, Land gently rolling; good rich soil, The timbered land is open, without undergrowth; Oak, Hick- ory, and Elm.
	80.20 The line between sections 8 and 17 will strike the river in less than 80.00 chains, I therefore run it West, on a <i>true</i> line between sections 8 and 17, Variation 17° 40' East,
8.20	A Black Oak, 16 in. dia.
27.25	A Black Walnut, 12 in. dia.
	Here enter Chickeeles river bottom, bearing North and South,
40.00	Set a post for quarter section corner, from which A Hickory, 12 in. dia. bears N. 22 E. 10 links dist. An Ironwood, 8 in. dia. bears S. 7 E. 2 links dist.
55.10	A Hickory, 16 in. dia.
56.50	Set a post on the left bank of Chickeeles river, a navigable stream, for corner to fractional sections 8 and 17, from which A Hickory, 12 in. dia. bears N. 25 E. 8 links dist. A Hackberry, 12 in. dia. bears S. 25 E. 25 links dist. Land, the bottom level and rich; upland rolling. Timber, Oak, Hickory, Buckeye, &c.
	North, between sections 8 and 9, Variation 17° 40' East,
7.42	A Walnut, 18 in. dia.
40.00	Set a post for quarter section corner, from which A Sugar Tree, 9 in. dia. bears N. 35 E. 12 links dist. A Walnut, 30 in. dia. bears S. 22 W. 11 links dist.
47.42	A Walnut, 18 in. dia.
53.74	A Sugar Tree, 20 in. dia.
80.00	Set a lime stone, 18 in. long, 12 in. wide, and 4 in. thick, for corner to sections 4, 5, 8, 9, from which, A sand rock, 4 feet square at the surface of the ground, and 2 feet high, bears N. 47½ E. 341 links dist. marked with a (X) cross, each mark being 6 in. long and ½ in. deep; bearing and distance taken to the cross,

Township 25 N. Range 2 W. Willamette Meridian.

CHAINS.	
	A White Oak, 36 in. dia. bears N. 24 W. 112 links dist. A White Oak, 30 in. dia. bears S. 13 W. 44 links dist. No tree in section 9 convenient to mark, Land rolling; good, 2d rate, Timber, Oak, Walnut, Hickory, and Sugar Tree, Thick undergrowth, same, briars and vines, February 9th, 1854.
	East, on a <i>random</i> line between sections 4 and 9, Variation 17° 40' East,
35.60	Leave timber and enter prairie, bearing South and N. E.
40.00	Set a post for temporary quarter section corner,
43.50	Northwest edge of a small deep pond of about 15 acres, lying, mostly in section 9, offset North 400 chains to a point thence East 9.50 chains to a point; thence South 4 chains to a point on the East bank of the pond, and in the random line between sections 4 and 9, and
53.00	East of the corner to sections 4, 5, 8, 9,
80.24	Intersected the North and South line 21 links South of the corner to sections 3, 4, 9, 10, from which corner I run West, on a <i>true</i> line between sections 4 and 9, Variation 17° 49' East,
40.12	Set a White Oak post, 6 inches diameter, in the eastern edge of prairie for quarter section corner, from which A White Oak, 16 in. dia. bears N. 56 W. 497 links dist. A Bur Oak, 20 in. dia. bears S. 75 W. 512 links dist.
44.75	A Black Oak, 16 in. dia. in East edge of timber,
80.24	The corner to sections 4, 5, 8, 9, Land level; good soil, Timber, Oak, Hickory, and Beech: very thick undergrowth; Oak and Hazel next the prairie.
	The line between sections 5 and 8 will strike Chickeeles river in less than 80 chains, I therefore run it a <i>true</i> line West, on a <i>true</i> line between sections 5 and 8, Variation 17° 40' East,
13.77	A White Oak, 20 in. dia.
40.00	Set a post for quarter section corner, from which A White Oak, 8 in. dia. bears N. 32 W. 4 links dist. A White Oak, 10 in. dia. bears S. 45 E. 5 links dist.
43.11	A White Oak, 40 in. dia.
47.50	Leave broken upland and enter the bottom to Chickeeles river, bearing South and N. E.
60.65	Set a post on the left bank of Chickeeles river for corner to frac- tional sections 5 and 8, from which A Blue Ash, 24 in. dia. bears N. 66 E. 4 links dist. An Elm, 24 in. dia. bears S. 56 E. 20 links dist.

Township 25 N. Range 2 W. Willamette Meridian.

CHAINS.	
	Land, upland broken, 3d rate; the bottom level and rich, Timber, Oak, Hickory, &c.; in the bottom, Elm and Ash; undergrowth, same, Pawpaw, Spice, and Vines.
	The line between sections 4 and 5 will strike Chickeeles river before reaching the <i>Township</i> line; I therefore run it North, on a <i>true</i> line between sections 4 and 5, Variation 17° 40' East,
13.75	A Cherry, 20 in. dia.
38.51	A White Oak, 24 in. dia.
40.00	Set a post for quarter section corner, from which A White Oak, 12 in. dia. bears N. 24 E. 12 links dist. A Beech, 28 in. dia. bears S. 44 E. 21 links dist. No tree West of the line convenient to mark,
43.15	A White Oak, 30 in. dia.
45.50	Leave broken upland and enter Chickeeles river bottom, bear- ing N. E. and S. W.
56.58	A Hackberry, 24 in. dia.
66.50	An Elm, 12 in. dia. on the left bank of Chickeeles river, mark it for corner to fractional sections 4 and 5, from which A Black Oak, 14 in. dia. bears S. 10 W. 18 links dist. An Elm, 18 in. dia. bears S. 45 E. 35 links dist. The upland broken, 3d rate; the bottom level, 1st rate, Timber, on upland, Oak; in bottom, Elm, Oak, Ash, and Hick- ory; undergrowth, Pawpaw and Spice. February 10th, 1854.
	The point for corner to sections 5, 6, 31 and 32 being in a deep swamp, and not having been established, I begin at the wit- ness corner on the S. E. edge of the swamp, 4.00 chains East of said point, and run thence East 250 links (with the line between sections 5 and 32) to a point; thence <i>North</i> 7.50 chains to a point; thence <i>West</i> 6.50 chains to a point on the North edge of the swamp and in the line between sections 31 and 32, and 7.50 chains <i>North</i> of the point for corner to sections 31 and 32, on the South Boundary of the Township. I here set a post for witness point, from which A Bur Oak, 16 in. dia. bears N. 31 E. 25 links dist. An Ash, 12 in. dia. bears N. 25 W. 17 links dist. From this witness point I run North, between sections 31 and 32, counting the distance from the point for corner to said sections in the swamp, Variation 17° 40' East,
12.99	A Walnut, 22 in. dia.
38.19	An Ash, 35 in. dia.
40.00	Set a post for quarter section corner, from which A Beech, 20 in. dia. bears N. 12 W. 45 links dist. A Sugar Tree, 20 in. dia. bears S. 12 E. 13 links dist.

Township 25 N. Range 2 W. Willamette Meridian.

CHAINS.	
57.74	An Ash, 24 in. dia.
66.19	A White Oak, 36 in. dia.
80.00	Set a post with trench for corner to sections 29, 30, 31, 32, from which A Beech, 26 in. dia. bears N. 9 W. 12 links dist. A Sugar Tree, 24 in. dia. bears S. 13 E. 56 links dist. And planted N. E. a Butter nut, and S. W. 4 Cherry stones, Land, South half level, North half rolling; good soil, Timber, Oak, Beech, Sugar Tree, and Walnut; undergrowth, same and Hazel on North part.
	East, on a <i>random</i> line between sections 29 and 32, Variation 17° 40' East,
40.00	Set a post for temporary quarter section corner,
80.16	Intersected the N. and S. line 10 links N. of post corner to sections 28, 29, 32 and 33, from which corner I run West, on a <i>true</i> line between sections 29 and 32, Variation 17° 36' East,
40.08	Set a post for quarter section corner, from which A Black Oak, 18 in. dia. bears N. 36 E. 42 links dist. A Bur Oak, 20 in. dia. bears S. 43 W. 47 links dist.
80.16	The corner to sections 29, 30, 31, 32, Land gently rolling; good soil; fit for cultivation, Timber, Oak, Beech, Hickory, and Walnut; open woods.
	West, on a <i>true</i> line between sections 30 and 31, knowing that it will strike the Chickeeles river in less than 80.00 chains, Variation 17° 40' East,
3.41	A White Oak, 15 in. dia.
5.00	Leave upland and enter creek bottom, bearing N. E. and S. W.
8.00	Elk creek, 200 links wide, gentle current, muddy bottom and banks, runs S. W. Ascertain the distance across the creek on the line as follows, viz: Cause the flag to be set on the right bank of the creek, and in the line between sections 30 and 31. From the station on the left bank of creek, at 8.00 chains, I run <i>South</i> 245 links to a point from which the flag on the right bank bears N. 45 W. which gives for the distance across the creek, on the line between sections 30 and 31, 2 chains 45 links.
25.17	A Bur Oak, 24 in. dia.
40.00	Set a post for quarter section corner, from which A Buckeye, 24 in. dia. bears N. 15 W. 8 links dist. A White Oak, 30 in. dia. bears S. 65 E. 12 links,
41.90	Set a post on the left bank of Chickeeles river, a navigable stream, for corner to fractional sections 30 and 31, from which

Township 25 N. Range 2 W. Willamette Meridian.

CHAINS.	
	A Buckeye, 16 in. dia. bears N. 50 E. 16 links dist. A Hackberry, 15 in. dia. bears S. 79 E. 14 links dist. Land, low bottom; subject to inundation 3 or 4 feet deep, Timber, Buckeye, Hackberry, Oak, and Hickory.
	North, between sections 29 and 30, Variation 17° 40' East.
6.50	Enter creek bottom, bearing N. E. and S. W.
13.00	Elk creek, 200 links wide, runs S. W.
15.00	Enter a small prairie, about 40 acres,
31.00	Leave prairie and enter timber, bearing E. and W.
40.00	Set a post for quarter section corner, from which A Hickory, 14 in. dia. bears N. 78 E. 15 links dist. A Bur Oak, 26 in. dia. bears N. 63 W. 19 links dist.
49.71	A Black Oak, 30 in. dia.
68.19	A Walnut, 36 in. dia.
80.00	Set a post for corner to sections 19, 20, 29, 30, from which A Beech, 15 in. dia. bears N. 24 E. 18 links dist. A Blue Ash, 24 in. dia. bears N. 79 W. 10 links dist. A Bur Oak, 9 in. dia. bears S. 14 W. 10 links dist. A Black Oak, 8 in. dia. bears S. 11 E. 14 links dist. Land, first half-mile, level prairie, and brushy, Oak and Hazel; second half-mile, some good timber, Oak, &c.; thick undergrowth, same.
	East, on a <i>random</i> line between sections 20 and 29, Variation 70° 25' East,
40.00	Set a post for temporary quarter section corner,
80.10	Intersected the N. and S. line 20 links North of the corner to sections 20, 21, 28, 29, from which corner I run West, on a <i>true</i> line between sections 20 and 29, Variation 17° 31' East,
40.05	Set a post for quarter section corner, from which A Sugar Tree, 24 in. dia. bears N. 17 W. 20 links dist. A Walnut, 14 in. dia. bears S. 10 E. 36 links dist.
80.10	The corner to sections 19, 20, 29, 30, Land level, and rather wet, Timber, Oak, Sugar Tree, Beech, and Walnut; open woods.
	West, on a <i>random</i> line between sections 19 and 30, Variation 17° 40' East,
40.00	Set a post for temporary quarter section corner,
75.53	Intersected the West boundary of the Township 20 links South of the corner to sections 19 and 30, from which corner I run East, on a <i>true</i> line between sections 19 and 30, Variation 17° 31' East,
35.52	Set a post for quarter section corner, from which A Sugar Tree, 18 in. dia. bears N. 26 W. 23 links dist. An Ash, 10 in. dia. bears S. 86 E. 32 links dist.

Township 25 N. Range 2 W. Willamette Meridian.

CHAINS.	
75.52	The corner to sections 19, 20, 29, 30, Land level; rich soil; not subject to inundation, Timber, Sugar Tree, Beech, Walnut, and Ash; undergrowth, Spice, Prickly Ash, and vines. February 11th, 1854.
	North, between sections 19 and 20, Variation 17° 40' East,
7.70	A Bur Oak, 20 in. dia.
27.16	A Locust, 18 in. dia.
34.00	A pond, 200 links wide, muddy bottom, and low banks; water not so deep as to prevent measuring across on the line with the chain. This pond extends about 15 chains East into section 20, and lies mostly in section 19, extending West,
40.00	Set a post for quarter section corner, from which A Beech, 9 in. dia. bears N. 56 E. 44 links dist. A Lynn, 12 in. dia. bears S. 36 W. 111 links dist.
49.00	The S. W. bank of a lake to be meandered, Set a post for corner to fractional sections 19 and 20, from which A Red Oak, 12 in. dia. bears S. 45 W. 21 links dist. A Lynn, 15 in. dia. bears S. 23 E. 24 links dist. From this corner offset West 7.50 chains to a point; thence North on an offset line 24.00 chains to a point; thence East 7.50 chains to a point in the line between sections 19 and 20—50 links in advance of lake; thence South to N. W. margin of lake, 50 links, where set a post for corner to frac- tional sections 19 and 20, from which A Red Oak, 20 in. dia. bears N. 27 E. 31 links dist. A Bur Oak, 15 in. dia. bears N. 36 W. 24 links dist. This corner is 72.50 chains North of the corner to sections 19, 20, 29, 30, and from which I continue the line between sections 19 and 20 North, counting the distance from the corner to sections 19, 20, 29, 30,
80.00	Set a post for corner to sections 17, 18, 19, 20, from which A Chesnut, 10 in. dia. bears N. 14 E. 14 links dist. A Buckeye, 12 in. dia. bears N. 86 W. 13 links dist. A Beech, 20 in. dia. bears S. 13 W. 16 links dist. A Buckeye, 20 in. dia. bears S. 27 E. 35 links dist. Land level; rich soil, but too wet for cultivation, Timber, Oak, Walnut, Buckeye, and Beech; undergrowth, Prickly Ash and vines.
	East, on a random line between sections 17 and 20, Variation 17° 40' East,
40.00	Set a post for temporary quarter section corner,
79.90	Intersected N. and S. line 7 links North of post corner to sec- tions 16, 17, 20, 21, from which corner I run

Township 25 N. Range 2 W. Willamette Meridian.

CHAINS.	
	West, on a true line between sections 17 and 20, Variation 17° 37' East,
39.95	Set a post near the North bank of the lake for quarter section corner, from which A White Oak, 12 in. dia. bears N. 33 E. 19 links dist. A White Oak, 15 in. dia. bears S. 16 W. 34 links dist. From this corner I run South 150 links to a point on the North bank of the lake, where set a meander corner, from which A Red Oak, 15 in. dia. bears N. 21 E. 15 links dist. An Ash, 12 in. dia. bears N. 16 W. 12 links dist.
79.90	The corner to sections 17, 18, 19, 20, Land level and wet; rich soil, Timber, Oak, Ash, Elm, and Beech; undergrowth, same, briars and vines.
	<i>Meanders of Island Lake.</i>
	Begin at the corner to fractional sections 19 and 20, on the N. W. margin of the lake, and run thence along the N. W. margin thereof, in fractional section 20, as follows, viz: N. 79 E. 20.00 chains, thence N. 84 E. 20.43 " to the meander corner 150 links South of the quarter section corner on the line between sections 17 and 20, thence S. 73 E. 16.00 chains, thence S. 61 E. 14.00 " " S. 40½ E. 19.22 " to the corner to fractional sections 20 and 21, on the N. E. bank of lake, at 52.33 chains. At 18.00 chains on this line cross the mouth of a branch, 30 links wide, coming from N. E. Begin at the corner to fractional sections 20 and 21, on S. E. bank of lake, at 28.94 chains, and run thence along the Southern bank of said lake in fractional section 20, as follows: S. 70 W. 20.00 chains, thence S. 85 W. 23.00 " " } *At 14.50 chains cross outlet N. 70 W. 12.00 " " } to lake, 30 links wide, running N. 30 W. 18.00* " " } W. about 5 chains into pond. N. 63 W. 20.24 " to the corner to fractional sections 19 and 20, at 49.00 chains; thence in section 19 as follows, viz: N. 75 W. 5.00 chains, thence N. 60 W. 2.00 " " N. 10 W. 6.00 " " N. 10 E. 6.00 " " N. 25 E. 3.00 " " N. 38½ E. 8.48 " to the corner to fractional sections 19 and 20 on the bank of lake at 72.50 chains.

Township 25 N. Range 2 W. Willamette Meridian.

CHAINS.	This lake has low, wet, brushy banks, and has an island of timber in the middle, which ought to be meandered. Timber, around lake, Ash, Maple, and Red Oak. I cause a flag to be set on the North bank of the island <i>South</i> of the meander corner, which is 150 links <i>South</i> of the quarter section corner on the line between sections 17 and 20. From the meander corner run a base 7.50 <i>East</i> to a point, from which the flag bears S. 45 W. which gives for the distance across the water to the flag on the island 7.50 chains. Set a meander post in the place of the flag, from which a Red Oak, 15 in. dia. bears S. 21 W. 24 links, and an Ash, 10 in. dia. bears S. 25 E. 17 links dist. From the meander post I run around the island as follows: S. 62 E. 7.50 chains, thence S. 55 E. 10.00 " " S. 20 E. 5.00 " " South 4.00 " " S. 25 W. 6.00 " " S. 62 W. 5.00 " " S. 80 W. 4.00 " " West 3.50 " " N. 70 W. 5.00 " " N. 62 W. 15.00 " " N. 45 W. 10.00 " " N. 35 W. 6.00 " " N. 40 E. 6.50 " " N. 82 E. 8.00 " " S. 88½ E. 14.20 " to the meander corner and place of beginning. This island is well timbered, and is good, dry land, timber, Oak, Hickory, Beech, and Ash; undergrowth, same and vines.
	The line between sections 18 and 19 will strike the river before reaching the range line, I therefore run it West, on a <i>true</i> line between sections 18 and 19, Variation 17° 40 East,
7.91	A Buckeye, 15 in. dia.
16.54	A Locust, 24 in. dia.
28.90	Set a post on the left bank of Chickeeles river for corner to fractional sections 18 and 19, from which A Buckeye, 24 in. dia. bears N. 76 E. 22 links dist. A Hackberry, 16 in. dia. bears S. 24 W. 15 links. There is an island in the river opposite this corner. To ascertain the distance on the line between sections 18 and 19 to the island, I send my flagman across the slough, who sets the flag on the S. E. bank of the island, and in the line between sections 18 and 19, from the corner to said sections on the left bank of the river. I run South 260 links to a point from

Township 25 N. Range 2 W. Willamette Meridian.

CHAINS.	which the flag on the island bears N. 45½ W. which gives for the distance 3.79 chains, to which add 28.90 chains, makes 82.69 To the flag. Set a post in the place of the flag for corner to fractional sections 18 and 19, from which A White Oak, 16 in. dia. bears N. 41 W. 37 links dist. A Bur Oak, 14 in. dia. bears S. 81 W. 16 links dist. 36.52 A White Oak, 20 in. dia. 39.10 A Bur Oak, 16 in. dia. 40.00 Set a post for quarter section corner, from which A White Oak, 15 in. dia. bears N. 15 W. 21 links dist. A Walnut, 20 in. dia. bears S. 21 E. 17 links dist. 45.50 Set a post on the N. W. bank of the island for corner to fractional sections 18 and 19, from which A Hackberry, 10 in. dia. bears N. 85 E. 15 links dist. A Hickory, 15 in. dia. bears S. 51 E. 17 links dist. From this corner I meander around the island as follows: In section 19, S. 60 W. 10.00 chains, thence S. 43 W. 8.00 " " South 2.00 " " East 2.00 " " N. 55 E. 4.00 " " N. 60 E. 10.00 " " N. 66½ E. 14.15 " to the corner to fractional sections 18 and 19, on the S. E. bank of the island, thence in section 18, N. 70 E. 10.00 chains, thence N. 75 E. 10.00 " " N. 25 E. 4.00 " " North 2.50 " " West 1.00 " " S. 66 W. 2.00 " " S. 75 W. 4.00 " " S. 80 W. 10.00 " " S. 63½ W. 21.10 " to the corner to fractional sections 18 and 19, on the N. W. bank of island, and place of beginning. Land, on island and main shore, level and rich; not subject to inundation, Timber, Oak, Hickory, Ash, and Walnut; undergrowth, same and vines.
	North, between sections 17 and 18, Variation 17° 40' East.
6.57	A Hickory, 20 in. dia.
10.86	Set a post on the left bank of Chickeeles river for corner to fractional sections 17 and 18, from which A Buckeye, 8 in. dia. bears S. 25 W. 15 links dist. A Hackberry, 10 in. dia. bears S. 61 E. 3 links dist. Monday, February 13th, 1854.

Township 25 N. Range 2 W. Willamette Meridian.

Meanders of the left bank of Chickeeles river through the Township.

Begin at the corner to fractional sections 4 and 33, in the North Boundary of the Township and on the left and S. E. bank of the river, and run thence down stream with the meanders of the left bank of said river, in fractional section 4, as follows:

Causes.	Distances.	Remarks.
S. 76 W.	18.50 chs.	To the corner to fractional sections 4 and 5; thence in section 5—
S. 61 W.	10.00	
S. 59 W.	8.30	
S. 54 W.	10.70	To the corner to fractional sections 5 and 8; thence in section 8—
S. 40 W.	5.60	
S. 50 W.	8.50	
S. 37 W.	17.00	
S. 44 W.	22.00	
S. 38 W.	26.72	To the head of rapids.
S. 21 W.	16.00	
S. 10 W.	13.00	To the foot of rapids.
South	8.50	
S. 9 E.	5.00	To the corner to fractional sections 8 and 17.
S. 17 E.	20.00	
S. 10 E.	12.00	Land, along fractional section 8, high, rich bottom; not subject to inundation.
S. 22½ E.	8.46	
		The rapids are 37.00 chains long; rocky bottom; estimated fall 10 feet.
		<i>Meanders in section 17.</i>
S. 17 E.	15.00	At 5 chains discovered a vein of coal, which appears to be 5 feet thick, and may be readily worked.
S. 8 E.	12.00	At 3.00 chains the ferry across the river to Williamsburg, on the opposite side of the river.
S. 4 W.	22.00	
S. 25 W.	17.00	To the corner to fractional sections 17 and 18; thence in section 18—
S. 78 W.	12.00	
S. 71 W.	9.55	
S. 65 W.	15.00	To the corner to fractional sections 18 and 19. In section 19.
S. 73¾ W.	15.93	
S. 65 W.	14.00	
S. 60 W.	23.00	

Township 25 N. Range 2 W. Willamette Meridian.

Causes.	Distances.	Remarks.
S. 42 W.	10.00 chs.	At 2 chains cross outlet to pond and lake, 50 links wide, to the corner to fractional sections 19 and 24, on the range line, 32.50 chains North of the corner to sections 19, 30, 24 and 25.
S. 20 W.	10.00	
S. 16½ W.	13.83	
		Begin at the corner to fractional sections 25 and 30, on the range line 1 chain South of the quarter section corner on said line, and run thence down stream with the meanders of the left bank of Chickeeles river, in fractional section 30, as follows, viz:
S. 41 E.	20.00	At 10 chains discovered a fine mineral spring. Here appear the remains of an Indian village.
S. 49 E.	15.00	
S. 42 E.	12.00	To the corner to fractional sections 30 and 31; thence in section 31—
S. 12¾ E.	5.30	
S. 12 E.	10.00	To mouth of Elk river, 200 links wide; comes from the East.
S. 12 W.	13.50	
S. 41 W.	9.00	At 200 links across the creek.
S. 58 W.	11.00	
S. 35 W.	11.00	At 15 chains mouth of stream, 25 links wide; comes from S. E.
S. 20 W.	20.00	
S. 23¾ W.	8.80	To the corner to fractional sections 31 and 36, on the range line, and 8.56 chains North of the corner to sections 1, 6, 31 and 36, or S. W. corner to this Township.
		Land along the left bank of Chickeeles river is level rich soil, and only a small part subject to inundation.
		Timber, Oak, Hickory, Beech, and Elm; not much undergrowth.
		February 14th, 1854.
CHAINS.	From the corner to sections 30 and 31, on the West Boundary of the Township, I run East, on a true line between sections 30 and 31, Variation 18° East,	
15.10	A White Oak, 16 in. dia.	
23.50	Intersected the right bank of Chickeeles river, where set a post for corner to fractional sections 30 and 31, from which	
	A Black Oak, 16 in. dia. bears N. 60 W. 25 links dist.	
	A White Oak, 20 in. dia. bears S. 35 W. 32 links dist.	

Township 25 N. Range 2 W. Willamette Meridian.

CHAINS. From this corner I run South 12 links to a point West of the corner to fractional sections 30 and 31, on the left bank of the river; thence continue South 314 links to a point from which the corner to fractional sections 30 and 31, on the left bank of the river, bears N. 72 East, which gives for the distance across the river 9.65 chains. The length of the line between sections 30 and 31 as follows, viz:

Part East of river	-	-	-	-	41.90 chains.
Part across river	-	-	-	-	9.65
Part West of river	-	-	-	-	23.50
Total	-	-	-	-	<u>75.05</u>

Commence the meanders of section 31 at the corner to fractional sections 31 and 36, on the right bank of Chickeeles river, and run thence up stream with the meanders of the right bank of said river, in fractional section 31, as follows:

- N. 25 E. 7.00 chains, thence
 - N. 38 E. 11.00 " "
 - N. 50 E. 12.50 " "
 - N. 25 E. 10.00 " "
 - North 13.40 " to the corner to fractional sections 30 and 31; thence in section 30
 - N. 45 W. 14.00 chains, thence
 - N. 40 W. 12.00 " "
 - N. 34½ W. 10.50 " to the corner to fractional sections 25 and 30, on the right bank of Chickeeles river, 27.73 chains North of the corner to sections 25, 30, 31, 36.
- Land level; rich bottom; not subject to inundation, Timber, Oak, Hickory, and Ash; undergrowth, same, Spice and vines.

From the corner to sections 18, 19, 13 and 24, I run East, on a true line between sections 18 and 19, Variation 18° 00' East,

- 3.52 A Bur Oak, 20 in. dia
 - 17.31 A White Oak, 15 in. dia.
 - 21.00 Set a post on the right bank of Chickeeles river for corner to fractional sections 18 and 19, from which
 - A White Oak, 15 in. dia. bears N. 10 E. 31 links dist.
 - A Black Oak, 20 in. dia. bears S. 80 W. 15 links dist.
- From this corner the corner to fractional sections 18 and 19, on the N. W. bank of the island, bears East.
- To obtain the distance across the river between the two corners, I run (from the corner on right bank) North 375 links to a point from which the corner on the island bears S. 68 E. which gives for the distance 9.27 chains.

Township 25 N. Range 2 W. Willamette Meridian.

CHAINS.	The length of the line between sections 18 and 19 is 75.77 chains, the several parts of which being as follows:
	East of river and across the island, including 3.79 chains across the slough - - - - - 45.50 chains.
	Across the river N. W. of island - - - - - 9.27
	West of river - - - - - 21.00
	Aggregate as above - - - - - <u>75.77</u>

From the corner to fractional sections 19 and 24, on the right bank of Chickeeles river, I run up stream with the right bank of said river in fractional section 19, as follows, viz:

- N. 30 E. 20.00 chains, thence
- N. 45½ E. 15.50 " to the corner to fractional sections 18 and 19; thence, in section 18,
- N. 58 E. 10.00 chains, thence
- N. 63 E. 17.00 " "
- N. 75¾ E. 32.12 " to a point on the right bank of Chickeeles river North of the corner to fractional sections 17 and 18, on the left bank of the river; I here set a post for corner to fractional sections 17 and 18, on North side of river, from which
 - A Black Oak, 15 in. dia. bears N. 25 E. 21 links dist.
 - A Black Oak, 20 in. dia. bears N. 27 W. 17 links dist.

To obtain the distance across the river, on the line between sections 17 and 18, I run a base line West 430 links to a point from which the post corner to fractional sections 17 and 18, on the left and South bank of the river, bears S. 23 East, which gives for the distance 10.13 chains, to which add 10.80 chains, makes

20.93 To the corner to fractional sections 17 and 18, on the right and North bank of the river.

Survey of a claim of 640 acres, confirmed by law to Samuel Williams.

Begin at a Black Oak, 15 inches diameter, on the right bank of Chickeeles river, opposite the head of a small island in said river. Mark said tree with a blaze 15 inches long and 6 inches wide, a notch at the top and another at the bottom of the blaze, and on the face of the blaze, with a marking iron, the letters P. S. C. (Private Survey Claim.) From the corner tree

- A Black Oak, 20 in. dia. bears N. 27 W. 55 links dist.
- A Bur Oak, 16 in. dia. bears S. 50 W. 41 links dist.

Both trees marked with a blaze and notch at the lower end of the blaze, facing the corner tree, and on the blaze, with a marking iron, cut the letters W. P. S. (Witness Private Survey.) This is also the S. E. corner of the town of Wil-

Township 25 N. Range 2 W. Willamette Meridian.

CHAINS.	
	liamsburg, and from which I run up stream with the meanders of the right bank of Chickeeles river as follows: At an assumed
	Variation 18° 00' East,
	North 17.00 chains; at 11.00 chains ferry landing.
	N. 12 W. 16.00 chains,
	N. 18 W. 20.00 chains; at 14 chains foot of rapids.
	N. 12 W. 27.45 chains, to a point on the right bank of the river, where set a post for corner to this survey, from which
	A Black Oak, 20 in. dia. bears N. 75 W. 33 links dist.
	A white Oak, 20 in. dia. bears S. 43 W. 35 links dist.
	NOTE.—At 3 chains on the last course of meanders cross the mouth of stream 40 links wide; comes from the N. W.
	From this corner I run
	S 78 W. with the Northern line of this survey,
15.17	A Black Oak, 20 in. dia.
20.00	A stream, 30 links wide, rapid current, runs S. E.
37.51	A Bur Oak, 20 in. dia.
52.34	A Hickory, 16 in. dia.
62.41	A White Oak, 20 in. dia.
79.42	Set a post for corner to this survey, from which
	A Black Oak, 16 in. dia. bears N. 25 E. 16 links dist.
	A White Oak, 20 in. dia. bears N. 10 W. 21 links dist.
	A White Oak, 24 in. dia. bears S. 21 W. 16 links dist.
	A Black Oak, 24 in. dia. bears S. 60 E. 17 links dist.
	thence
	S. 12 E. with the Western line of this survey,
10.25	A Black Oak, 16 in. dia.
17.51	A White Oak, 15 in. dia.
41.73	A Sugar Tree, 20 in. dia.
55.00	The road to Williamsburg, bearing E. and W.
61.53	An Elm, 14 in. dia.
80.00	Set a post for corner of this survey, from which
	A White Oak, 16 in. dia. bears N. 73 E. 25 links dist.
	A White Oak, 12 in. dia bears N. 21 W. 17 links dist.
	A Black Oak, 20 in. dia. bears S. 61 W. 22 links dist.
	A Black Oak, 24 in. dia. bears S. 31 E. 23 links dist.
	thence
	N. 78 E. with the Southern line of this survey,
15.73	A Black Oak, 16 in. dia.
25.31	A Black Oak, 20 in. dia.
45.61	A White Oak, 12 in. dia.
67.20	A White Oak, 18 in. dia.
77.68	To the corner tree and place of beginning.
	The land of this claim rolling, good, 2d rate soil; somewhat broken along the rapids in the N. E. part; well timbered,

Township 25 N. Range 2 W. Willamette Meridian.

CHAINS.	
	Black Oak, White Oak, Hickory, and Bur Oak; not much undergrowth; some Hazel, briars, and vines. The town of Williamsburg, situated on the S. E. part of the claim, is pleasantly located on the right bank of the river, some 8 or 10 feet above high water, and has at this time sixteen families residing in it. Some three or four tenements are now being constructed within the limits of the town.
	February 15th, 1851.
	From the corner to fractional sections 17 and 18, on the right and North bank of Chickeeles river, 20.93 chains North of the corner to sections 17, 18, 19, 20, I run
	North, between sections 17 and 18, counting the distance from the corner to sections 17, 18, 19, 20,
	Variation 18° East,
22.73	A Black Oak, 20 in. dia.
36.45	Intersected the Southern line of Samuel Williams's claim, where set a post for corner to fractional sections 17 and 18, from which
	A Black Oak, 16 in. dia. bears S. 50 W. 22 links dist.
	A White Oak, 20 in. dia. bears S. 21 E. 31 links dist.
	From this corner I run N. 78 E. along the Southern line of the said claim 20.15 chains to the corner tree on the right bank of Chickeeles river and S. E. corner of said claim; thence down stream, on the right bank of said river, in fractional section 17, as follows:
	S. 16 W. 10.00 chains, thence
	S. 45 W. 10.00 " "
	S. 72 W. 10.30 " to the corner to fractional sections 17 and 18.
	<i>Field notes of the survey of a small island in Chickeeles river, lying wholly in section 17.</i>
	Cause the flag to be set on the head of the island at a point bearing S. 45 E. from the Black Oak Tree, the S. E. corner to Samuel Williams's claim; from said corner tree run S. 45 W. 215 links to a point West of the flag on the head of the island, which gives for the distance from the corner tree to the flag 215 links. Set a meander post in the place of the flag, from which
	A Bur Oak, 16 in. dia. bears S. 10 W. 15 links dist.
	A White Oak, 12 in. dia. bears S. 15 E. 21 links dist.
	From the meander post I run around the island as follows:
	S. 16 W. 9.00 chains, thence
	S. 45 W. 10.00 " "
	S. 10 W. 2.00 " "
	South 1.50 " to the lower end of island, thence

Township 25 N. Range 2 W. Willamette Meridian.

CHAINS.	East	1.50 chains, thence
	N. 75 E.	4.00 " "
	N. 50 E.	5.00 " "
	N. 30 E.	6.00 " "
	N. 10 E.	6.00 " "
	N. 10 W.	3.00 " "
	N. 73 W.	2.96 " to the meander post and place of beginning.

This island is well timbered; White and Black Oak, and Hickory; not subject to inundation; undergrowth, same, Spice and vines.

From the corner to sections 7, 18, 12 and 13, on the range line I run

East, on a true line between sections 7 and 18, Variation 18° 00' East,

7.93 Intersected the western line of Samuel Williams's survey of 640 acres, and at said intersection set a post for corner to fractional sections 7 and 18, from which

A White Oak, 15 in. dia. bears N. 25 W. 15 links dist.

A Black Oak, 20 in. dia. bears S. 34 W. 19 links dist.

From this corner I run

N. 12 W. with the Western line of said Williams's claim, 23.23 chains to the N. W. corner thereof.

Land gently rolling, Timber, Oak and Hickory.

From the corner to fractional sections 17 and 18, in the Southern line of Samuel Williams's survey, and 36.45 chains North of the corner to sections 17, 18, 19, 20, I run

North, on a blank line passing through Samuel Williams' survey, counting the distance from the corner to said sections 17 18, 19, 20,

Variation 18° 00' East,

40.00 Point for quarter section corner in Samuel Williams's survey; corner not established,

52.50 The road leading into Williamsburg,

80.00 Set a temporary corner to sections 7, 8, 17, 18, in said Williams's claim,

This line passes through the back part of the town of Williamsburg; but I make no connexion with the lines of said town.

North, on a blank line between sections 7 and 8,

Variation 18° 00' East,

12.50 To creek, 30 links wide; runs east, comes from N. W.

38.10 Intersected the North Boundary of Samuel Williams's survey, where set a post for corner to fractional sections 7 and 8, from which

Township 25 N. Range 2 W. Willamette Meridian.

CHAINS.	A Black Oak, 10 in. dia. bears N. 10 E. 15 links dist.
	A Bur Oak, 15 in. dia. bears N. 16 W. 17 links dist.
	From this corner I run N. 78 E. on the North line of said claim, 440 links to the N. E. corner thereof, on the right bank of Chickeeles river,
	From the corner of fractional sections 7 and 8 in the North line of Samuel Williams's survey,
	North, on a true line between sections 7 and 8, counting the distance from the temporary corner to sections 7, 8, 17, 18, within said Williams's survey,
40.00	Set a post for quarter section corner, from which
	A Black Oak, 15 in. dia. bears N. 25 E. 16 links dist.
	A White Oak, 16 in. dia. bears N. 73 W. 12 links dist.
45.17	A White Oak, 18 in. dia.
63.71	A Bur Oak, 15 in. dia.
80.00	Set a post for corner to sections 5, 6, 7, 8, from which
	A Red Oak, 20 in. dia. bears N. 20 E. 40 links dist.
	A White Oak, 16 in. dia. bears N. 16 W. 43 links dist.
	A Red Oak, 24 in. dia. bears S. 80 W. 39 links dist.
	A White Oak, 40 in. dia. bears S. 75 E. 22 links dist.
	Land gently rolling; good rich soil, Timber, Oak, Hickory, and Ash.
	February 16th, 1854.

East, on a true line between sections 5 and 8, Variation 18° 00' East,

5.16 A White Oak, 15 in. dia.

7.41 A Bur Oak, 12 in. dia.

10.50 Set a post on the right bank of Chickeeles river for corner to fractional sections 5 and 8 west of river, from which

A Red Oak, 30 in. dia. bears N. 58 W. 5 links dist.

A Hickory, 12 in. dia. bears S. 42 W. 5 links dist.

From this corner the post corner to fractional sections 5 and 8, on the left bank of the river, bears S. 89 E.

From a point 16 links South of this corner, and West of the corner to fractional sections 5 and 8, on the left and East bank of the river, I run North 454 links to a point from which the corner post on the left bank of the river bears S. 63 E. which gives for the distance across the river 8.91 chains. The length of the line between sections 5 and 8, including the distance across the river, is therefore 80.06 chains, viz:

East of river	-	-	-	-	-	60.65 chains.
Across river	-	-	-	-	-	8.91
West of river	-	-	-	-	-	10.50
Total	-	-	-	-	-	<u>80.06</u>

Township 25 N. Range 2 W. Willamette Meridian.

CHAINS.	West, on a <i>random</i> line between sections 6 and 7, Variation 18° 00' East,
25.10	A stream, 25 links wide, gentle current, runs South,
40.00	Set a post for temporary quarter section corner,
56.00	A stream, 15 links wide, runs S. E.
76.26	Intersected the West Boundary 21 links North of the corner to sections 6 and 7, from which corner I run East, on a <i>true</i> line between sections 6 and 7, Variation 18° 09' East,
36.26	Set a post for quarter section corner, from which A Black Oak, 16 in. dia. bears N. 15 W. 21 links dist. A White Oak, 40 in. dia. bears S. 21 W. 33 links dist.
76.26	The corner to sections 5, 6, 7, 8. Land hilly; 2d rate, Timber, Oak, Sugar Tree, and Hickory; undergrowth, same and Hazel.
	North, on a <i>random</i> line between sections 5 and 6, Variation 18° 00' East,
20.00	Enter windfall, bearing N. 60 W. and S. 60 E.
35.00	Leave windfall, having same bearings,
40.00	Set a post for temporary quarter section corner,
80.06	Intersected the North Boundary of the Township 24 links East of the corner to sections 5 and 6, from which corner I run South, on a <i>true</i> line between said sections 5 and 6, Variation 18° 10' East,
40.06	Set a post for quarter section corner, from which A Hickory, 20 in. dia. bears N. 18 E. 27 links dist. A White Oak, 24 in. dia. bears S. 31 W. 18 links dist.
80.06	The corner to sections 5, 6, 7, 8. Land rolling, and 2d rate, Timber, Oak, Hickory, Sugar Tree, and Ash; undergrowth, same and Hazel.
	From the corner to sections 4, 5, 32 and 33, on the North Boundary of the Township, I run South, on a <i>true</i> line between sections 4 and 5, Variation 18° 00' East,
2.10	A White Oak, 15 in. dia.
4.00	Set a post on the right bank of Chickeeles river for corner to fractional sections 4 and 5, from which A Bur Oak, 16 in. dia. bears N. 25 E. 34 links dist. A Black Oak, 20 in. dia. bears N. 33 W. 21 links dist.
	From this corner the post corner to fractional sections 4 and 5, on the left bank of the river, bears S. 1/2 W. To obtain the distance across the river I run (from the corner on the right bank) N. 89° 30' W. 326 links to a point from which the post corner to fractional sections 4 and 5, on the left bank, bears

Township 25 N. Range 2 W. Willamette Meridian.

CHAINS.	S. 18° 30' E. which gives for the distance 9.46 chains. The length of the line between sections 4 and 5 will therefore be as follows, viz:
	Part South of the river - - - - 66.50 chains.
	Part across the river - - - - 9.46
	Part North of the river - - - - 4.00
	Aggregate - - - - 79.96

From the corner to fractional sections 4 and 33, on the right bank of Chickeeles river, I run down stream with the meanders of the right and N. W. bank of said river as follows, viz:

In section 4—
S. 41° 45' W. 5.35 chains to the corner to fractional sections 4 and 5; thence, in section 5
S. 72 W. 11.00 chains, thence
S. 55 W. 20.00 " "
S. 40 W. 20.00 " at this point the bluff comes to the river; thence
S. 42 W. 18.00 " thence
S. 40 W. 18.00 " "
S. 18 1/4 W. 19.75 " to the corner to fractional sections 5 and 8.
Land, rolling along the last three courses, which are under a bluff bank from 20 to 30 feet high; the bottom, along the first three courses of meanders, good rich land, Timber, Oak, Hickory, Ash, Elm, and Buckeye; undergrowth, same, and vines in the bottom.

From the corner to fractional sections 5 and 8, on the right bank of the river, I continue the meanders down stream, along fractional section 8, as follows, under a bluff bank from 20 to 30 feet high:

S. 26 W. 9.70 chains, thence
S. 10 W. 15.00 " "
South 15.00 " to the head of rapids; thence
S. 12 E. 2.55 " to the corner to fractional section 8 and N. E. corner of Samuel Williams's claim. Mark the Black Oak witness tree to this corner, bearing N. 75 W. 33 links distant, "Section 8."
Land rolling, and rather broken along the river,
Timber, principally Oak.

February 17th, 1854.

Private claim surveyed after public survey.
Survey of a claim of 640 acres, confirmed by law to Daniel Reed.
Begin at the corner to fractional sections 5 and 8, on the left bank of Chickeeles river,

Township 25 N. Range 2 W. Willamette Meridian.

- CHAINS. The corner post standing, and witness trees agree with the description furnished me, viz:
 A Blue Ash, 24 in. dia. bears N. 66 E. 4 links dist.
 An Elm, 24 in. dia. bears S. 56 E. 20 links dist.
 From this corner I run down stream with the meanders of the left and East bank of said river S. 21 W. 16.00 chains to a point where set a post on the left and East bank of Chickeeles river, for the S. W. corner of the said Reed's claim, from which
 A Black Oak, 16 in. dia. bears N. 44 E. 37 links dist.
 This tree marked with a blaze 15 inches long, 6 inches wide, facing the corner post, with two notches—one at the upper end and the other at the lower end of the blaze; also marked with a marking iron on the face of the blaze the letters D. R. (Daniel Reed) W. P. C. (Witness Private Claim.)
 A Bur Oak, 20 in. dia. bears S. 47 E. 45 links dist.
 Marked with a blaze and notch at the lower end of the blaze facing the corner post, with the letters R. 2 W. T. 25 N. sec. 8,
 From the corner post I run
 S. 54 E. along the S. W. Boundary line of said claim,
 Variation 17° 40' East,
- 10.51 A Bur Oak, 16 in. dia.
 20.67 A Black Oak, 20 in. dia.
 31.00 Leave river bottom and enter upland, bearing N. and S.
 44.73 A White Oak, 24 in. dia.
 57.34 A White Oak, 20 in. dia.
 77.90 Set a post for corner of this claim and fractional section 8, from which
 A White Oak, 16 in. dia. bears N. 40 W. 31 links dist.
 This tree marked with a blaze and two notches facing the corner post; one notch above and the other below the blaze. Mark the letters W. P. C. (Witness Private Claim) on the face of the blaze,
 A Black Oak, 20 in. dia. bears S. 10 W. 21 links dist.
 A Bur Oak, 15 in. dia. bears S. 45 E. 13 links dist.
 Both trees marked with a blaze and notch facing the post, and S. 8, with a marking iron.
 From this corner I run
 N. 36 E. along the South Eastern line of this claim,
 Variation 17° 40' East,
- 3.41 A White Oak, 15 in. dia.
 5.45 Intersected the line between sections 8 and 9, where set a post for corner to fractional sections 8 and 9, from which
 A White Oak, 16 in. dia. bears S. 25 W. 22 links dist.
 A Bur Oak, 20 in. dia. bears S. 37 E. 18 links dist.

Township 25 N. Range 2 W. Willamette Meridian.

- CHAINS. From this corner I run *South*, with the line between said sections, 23.70 chains to the corner to sections 8, 9, 16, 17.
 33.73 A White Oak, 15 in. dia.
 41.17 A Bur Oak, 16 in. dia.
 57.31 A White Oak, 20 in. dia.
 60.57 A Black Oak, 30 in. dia.
 64.00 Leave timber and enter prairie, bearing N. and S.
 75.17 Intersected the line between sections 4 and 9, where set a post with mound and trench for corner to fractional sections 4 and 9,
 Plant N. E. a Hickory nut, S. E. 4 Apple seeds.
 To obtain the distance on the line between sections sections 4 and 9, from the fractional section corner just established, to the corner to sections 3, 4, 9, 10, I run as follows:
North, 4.00 chains (to avoid the pond) to a point; thence *East* on an offset line 12.00 chains to a point; thence *South* 4.00 chains to the line between said sections 4 and 9; thence *East* with said line, and at 39.33 chains, the corner to sections 3, 4, 9, 10, the distance being counted from the corner to fractional sections 4 and 9, in the S. E. line of Daniel Reed's claim,
 80.00 To a point for the East corner of the claim. Set a lime stone 10 inches square and 6 inches thick, and post with mound and trench, as per instructions, for corner to said claim and to fractional section 4. From the corner, a White Oak, 16 in. dia. standing in the edge of the timber, bears N. 65 W. 555 links distant. Mark said tree with a blaze and two notches, one above and the other below the blaze, facing the corner. With a marking iron cut the letters W. P. C. (Witness Private Claim) on the face of the blaze. This corner about 3.00 chains N. W. of a small pond. Thence I run N. 54 W. along the N. E. Boundary line of this claim,
 Variation 17° 40' East,
- 5.50 Leave prairie and enter timber, bearing N. E. and S. W.
 10.53 A Bur Oak, 15 in. dia.
 25.34 A Black Oak, 16 in. dia.
 54.07 Intersected the line between sections 4 and 5,
 Here set a post for corner to fractional sections 4 and 5, from which
 A Black Oak, 16 in. dia. bears N. 43 E. 22 links dist.
 A White Oak, 20 in. dia. bears N. 37 W. 17 links dist.
 From this corner I run *North* with the line between said sections 4 and 5, and at 30.81 chains, the corner to fractional sections 4 and 5, on the left and South bank of Chickeeles river,

Township 25 N. Range 2 W. Willamette Meridian

CHAINS.	
64.00	Leave upland, and enter river bottom, bearing N. E. and S. W.
65.50	A Bur Oak, 20 in. dia.
71.53	A Bur Oak, 16 in. dia.
75.36	A Walnut, 36 in. dia.
77.90	Set a post on the left and S. E. bank of Chickeeles river for corner of this claim and fractional section 5, from which A White Oak, 16 in. dia. bears N. 60 E. 31 links dist. Marked with a blaze and notch facing the post, and section 5 on the face of the blaze, A Bur Oak, 15 in. dia. bears S. 40 E. 37 links dist. Marked with a blaze and two notches facing the post. The letters W P. C. (Witness Private Claim) cut with a marking iron on the face of the blaze, From this corner I run up stream with the meanders of the left and S. E. bank of the river in fractional section 5, N. 37 E. 1.00 chains, thence N. 50 E. 8.50 " " N. 40 E. 5.60 " " N. 54 E. 10.70 " to the corner to fractional sections 4 and 5, on the left bank of the river, From the corner to fractional section 5 and the upper corner to the claim on the left bank of Chickeeles river, I run down stream with the meanders of the left bank of said river, within the claim, as follows: S. 37 W. 16.00 chains, thence S. 44 W. 22.00 " " S. 38 W. 26.72 " to the original corner to fractional sections 5 and 8, on the left and East bank of Chickeeles river, and place of beginning. Land, much the largest portion of this claim gently rolling upland; good, 2d rate timber, Oak, Walnut, Hickory, and Sugar Tree. The bottom land along the river is dry rich land, not subject to inundation. Timber, Walnut, Oak, Hickory, and Hackberry; undergrowth, same, briars and vines.

February 18th 1854.

GENERAL DESCRIPTION.

The quality of the land in this Township is considerably above the common average. There is a very fair proportion of rich bottom land, chiefly situated on both sides of Chickeeles river, which is navigable through the Township for steamboats of light draft, except over the rapids in section 8. These rapids are 37 chains long; estimated fall about 10 feet.

The uplands are generally rolling, good 1st and 2d rate land, and well adapted for cultivation. Elk river is a beautiful stream of clear water, running through the Southern part of the Township, and emptying into Chickeeles river, in section 31. There is a fine mill-seat on this stream in section 22.

Timber, chiefly Oak, Beech, Hickory, Hackberry, and Sugar Tree, and is very equally distributed over the Township, except in the prairie embracing parts of sections 3, 4, 9, 10, 15, and 16.

The town of Williamsburg was laid out by Samuel Williams, some two years since, on the right bank of Chickeeles river, a little below the foot of the rapids. It now contains sixteen houses, and others are being built; has a good landing in front, with a ferry, and has the appearance of thrift and prosperity.

There are several good quarries of stone (principally lime) along the Chickeeles and Elk rivers, which will afford inexhaustible quantities of excellent building materials. On the line between sections 1 and 12, I discovered gold dust and auriferous quartz, and in section 17, on the left bank of Chickeeles river, opposite Williamsburg, a valuable coal bank. There are three settlements—one on the N. W. quarter of section 10, one on the N. W. quarter of section 15 and N. E. quarter of section 16, and the other on the N. E. quarter of section 23 and N. W. quarter of section 24.

A valuable salt spring was discovered crossing the South Boundary of section 31, running N. W.; also the remains of an Indian village on the left bank of Chickeeles river, in section 30. Fossil remains on the West bank of a small lake in section 26, and ancient works on the left bank of Elk river, in the N. E. quarter of section 27.

LIST OF NAMES.

A list of the names of the individuals employed to assist in running, measuring, or marking the lines and corners described in the foregoing field notes of Township No. 25 North of the base line of Range No. 2 West of the Willamette meridian, showing the respective capacities in which they acted:

PETER LONG, Chainman.
JOHN SHORT, Chainman.
GEORGE SHARP, Axeman.
ADAM DULL, Axeman.
HENRY FLAGG, Compassman.

We hereby certify that we assisted Robert Acres, deputy surveyor, in surveying the exterior boundaries and subdividing Township number twenty-five North of the base line of Range number two west of the Willamette meridian, and that said Township has been in all respects, to the best of our knowledge and belief, well and faithfully surveyed, and the boundary monuments planted according to the instructions furnished by the Surveyor General.

PETER LONG, *Chainman.*
JOHN SHORT, *Chainman.*
GEORGE SHARP, *Axeman.*
ADAM DULL, *Axeman.*
HENRY FLAGG, *Compassman.*

Subscribed and sworn to by the above named persons, before me, a Justice of the Peace for the county of _____, in the State [or Territory] of _____, this _____ day of _____, 185 .

HENRY DOOLITTLE,
Justice of the Peace.

I, Robert Acres, deputy surveyor, do solemnly swear that, in pursuance of a contract with _____ surveyor of the public lands of the United States in the State [or Territory] of _____, bearing date the _____ day of _____, 185 , and in strict conformity to the laws of the United States and the instructions furnished by the said Surveyor General, I have faithfully surveyed the exterior boundaries [or subdivision and meanders, as the case may be] of Township number twenty-five North of the base line of Range number two West of the Willamette meridian, in the _____ aforesaid, and do further solemnly swear that the foregoing are the true and original field notes of such survey.

ROBERT ACRES,
Deputy Surveyor.

Subscribed by said Robert Acres, deputy surveyor, and sworn to before me, a Justice of the Peace for _____ county, in the State [or Territory] of _____, this _____ day of _____, 185 .

HENRY DOOLITTLE,
Justice of the Peace.

To each of the original field books, the Surveyor General will append his official approval, according to the following form, or so varied as to suit the facts in the case :

SURVEYOR'S OFFICE AT _____, 185 .

The foregoing field notes of the survey of [here describe the survey,] executed by Robert Acres, under his contract of the _____ day of _____,

185 , in the month of _____, 185 , having been critically examined, the necessary corrections and explanations made, the said field notes, and the surveys they describe, are hereby approved.

A. B.
Surveyor General.

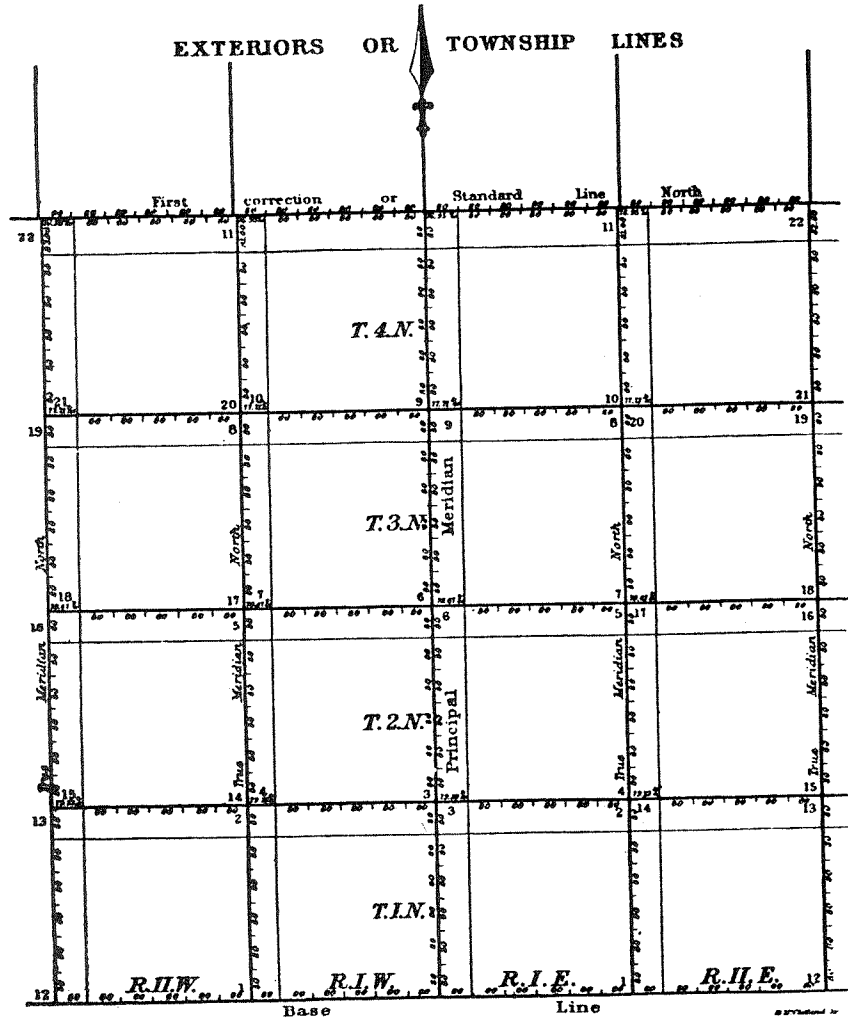
To the copies of the field notes transmitted to the seat of government, the Surveyor General will append to each Township the following certificate :

I certify that the foregoing transcript of the field notes of the survey of the [here describe the character of the surveys, whether meridian, base line, standard parallel, exterior Township lines, or subdivision lines, and meanders of a particular Township] in the State [or Territory] of _____, has been correctly copied from the original notes on file in this office.

A. B.
Surveyor General.

TABLE					
<i>Showing the difference of latitude and departure in running 80 chains, at any course from 1 to 60 minutes.</i>					
Minutes.	Links.	Minutes.	Links.	Minutes.	Links.
1	2 $\frac{1}{8}$	21	49	41	95 $\frac{2}{8}$
2	4 $\frac{2}{8}$	22	51 $\frac{1}{8}$	42	98
3	7	23	53 $\frac{2}{8}$	43	100 $\frac{1}{8}$
4	9 $\frac{1}{8}$	24	56	44	102 $\frac{2}{8}$
5	11 $\frac{2}{8}$	25	58 $\frac{1}{8}$	45	105
6	14	26	60 $\frac{2}{8}$	46	107 $\frac{1}{8}$
7	16 $\frac{1}{8}$	27	63	47	109 $\frac{2}{8}$
8	18 $\frac{2}{8}$	28	65 $\frac{1}{8}$	48	112
9	21	29	67 $\frac{2}{8}$	49	114 $\frac{1}{8}$
10	23 $\frac{1}{8}$	30	70	50	116 $\frac{2}{8}$
11	25 $\frac{2}{8}$	31	72 $\frac{1}{8}$	51	119
12	28	32	74 $\frac{2}{8}$	52	121 $\frac{1}{8}$
13	30 $\frac{1}{8}$	33	77	53	123 $\frac{2}{8}$
14	32 $\frac{2}{8}$	34	79 $\frac{1}{8}$	54	126
15	35	35	81 $\frac{2}{8}$	55	128 $\frac{1}{8}$
16	37 $\frac{1}{8}$	36	84	56	130 $\frac{2}{8}$
17	39 $\frac{2}{8}$	37	86 $\frac{1}{8}$	57	133
18	42	38	88 $\frac{2}{8}$	58	135 $\frac{1}{8}$
19	44 $\frac{1}{8}$	39	91	59	137 $\frac{2}{8}$
20	46 $\frac{2}{8}$	40	93 $\frac{1}{8}$	60	140

Diagram A



The upright figures (made thus 1.2.3) commencing near the Principal Meridian and Base line with No. 1, indicate the perambulations of the Surveyor in running the Townships and Correction lines.

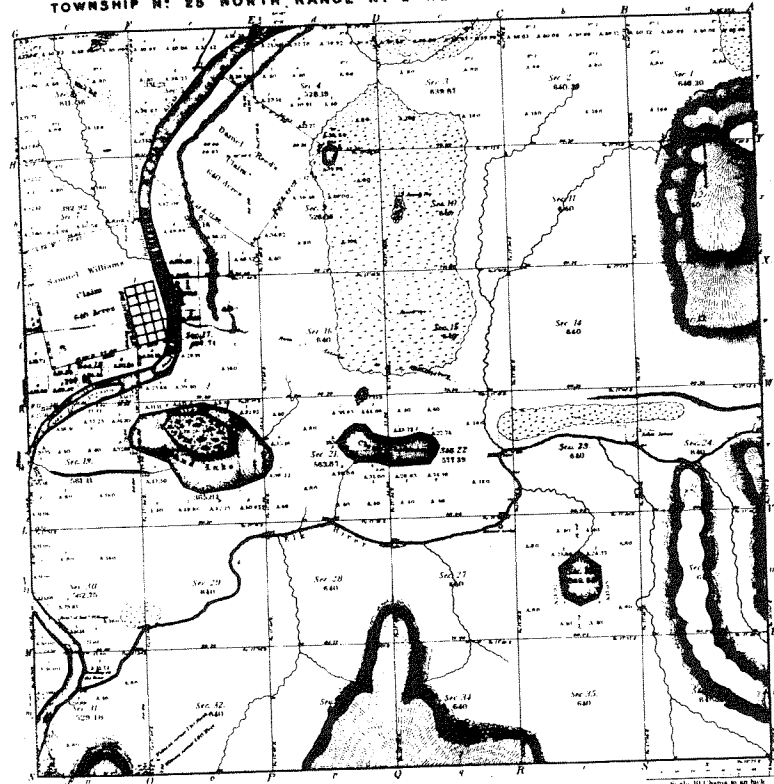
The Correction or Standard lines North of the Base are every 4 townships, and South of the Base every 5 townships.

The excess or deficiency of measurement on northern and southern boundaries is thrown on the westernmost half mile.

The measurements between Meridian lines will, of course, always vary according to the latitude of the survey, besides being liable to be rendered inexact where the country is very hilly or broken. The convergency of the range lines as shown by the measurements on this diagram, is according to calculation, as it exists between the parallels of 46° and 47° N. L.

Diagram B.

TOWNSHIP N: 25 NORTH RANGE N: 2 WEST WILLAMETTE MERIDIAN.



Name	Acres	Value	Remarks
Township			
Subdivisions			

The above map of Township N: 25 North, Range N: 2 West, Willamette Meridian, is a true and correct copy of the original map on file in this office, which has been a correct and true copy of the original map on file in this office, which has been a correct and true copy of the original map on file in this office.

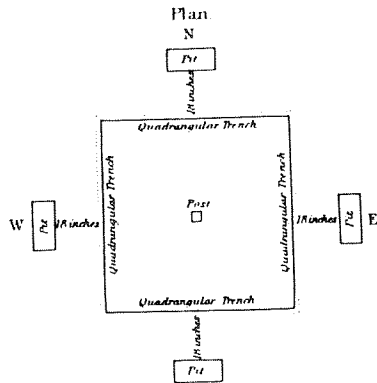
Approved: Sec. of Public Lands, 1870
 Printed: 1870
 Estimated cost of map and table, \$10
 September, 1870

C.

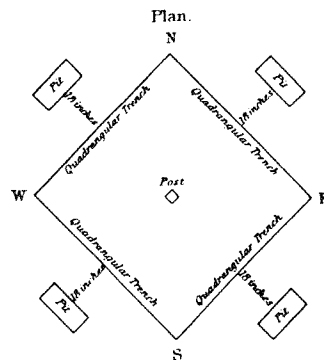
Diagram for the

Illustration of Mound, Stake, and Stone corner boundaries.

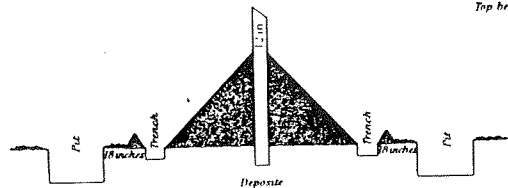
Position of Corner Mound common to two Townships or two Sections.



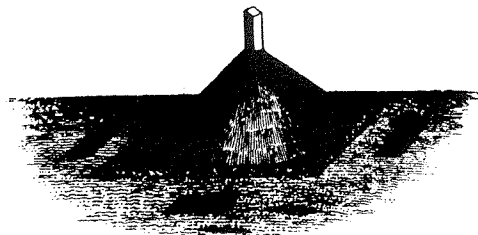
Position of Corner Mound common to four Townships or four Sections.



Section.



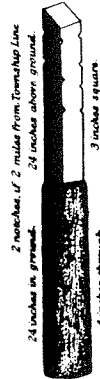
Elevation.



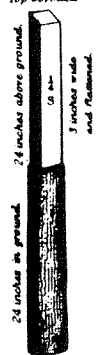
Township Corner Post.
Top bevelled to turn rain.



Section Corner Post
Top bevelled.



Quarter Section Corner P
Top bevelled.



Township Corner Stone.

Section Corner Stone.

Quarter Section Corner Stone.

Section Corner.
Flat Stone.

